



## Corning® Varioptic® V-PE-80R0 Series Variable Focus and Astigmatism Lens

### Overview

V-PE-80R0 Series is based on Corning® Varioptic® liquid lens providing variable focus tilt and astigmatism. It is provided with a complete calibration of the spherical and cylindrical power.

### Ordering Information

- **Corning® Varioptic® V-PE-80R0-07 variable focus and astigmatism lens:** Packaged liquid lens with electronic board and 8-pin, 0.5 mm pitch straight flex cable with on-flex thermistor

### Performance Summary

- 24 diopters of sphere optical power range
- 5 diopters of cylinder optical power range
- Embeds liquid lens driver, temperature sensor and microcontroller
- Integrates individual lens calibration parameters
- I<sup>2</sup>C / RS 232 interface

### Contents

Ordering Information.....	1
Performance Summary.....	1
Opto-electrical specifications .....	2
Mechanical Dimensions.....	4
General Description Of The Board.....	6
Absolute Maximum Ratings .....	7
Electrical Specifications .....	7
Precaution .....	7
Register Definition .....	8
UART Protocol (RS232) .....	8
I2C Protocol.....	9



## Opto-electrical specifications

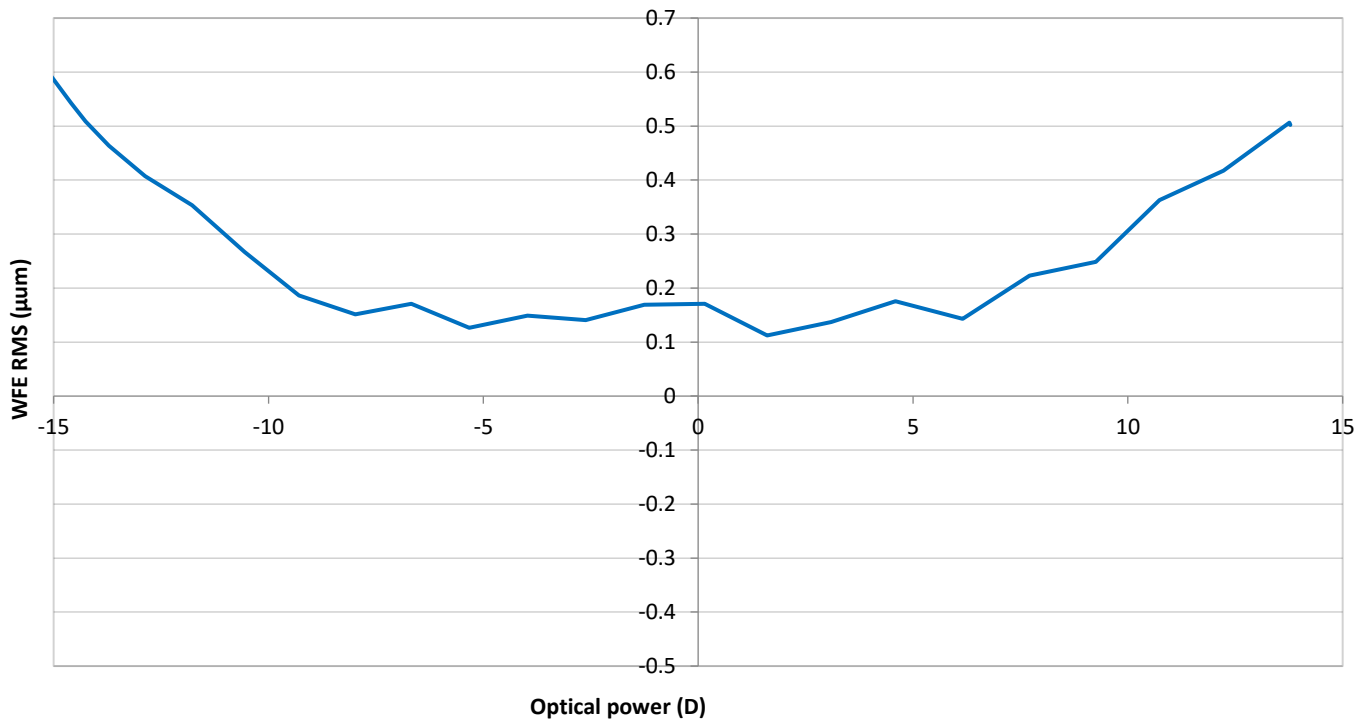
@25°C, @635 nm unless otherwise stated

<i>Parameter</i>	<i>Unit</i>	<i>Symbol</i>	<i>Min</i>	<i>Typ</i>	<i>Max</i>	<i>Notes</i>
Aperture size	mm	$\varnothing_e$		8		(1)
Sphere only optical power range	m <sup>-1</sup>	PS <sub>L</sub> / PS <sub>H</sub>	-12		+12	(2)
Sphere optical power range using cylinder	m <sup>-1</sup>	PSC <sub>L</sub> / PSC <sub>H</sub>	-6		+6	(3)
Cylinder optical power range	m <sup>-1</sup>	PC <sub>L</sub> / PC <sub>H</sub>	-5		0	(3)
Sphere and cylinder optical power accuracy on full range	m <sup>-1</sup>			0.17		
Sphere and cylinder optical power accuracy on reduced range	m <sup>-1</sup>			0.07		(4)
Astigmatism angle accuracy	°			4		
Wave Front Error, rms (on 8mm aperture)	nm	WFE <sub>rms</sub>		300		(2)(5)
Optical transmission @587nm	%	T <sub>587</sub>	92	95		

### Notes:

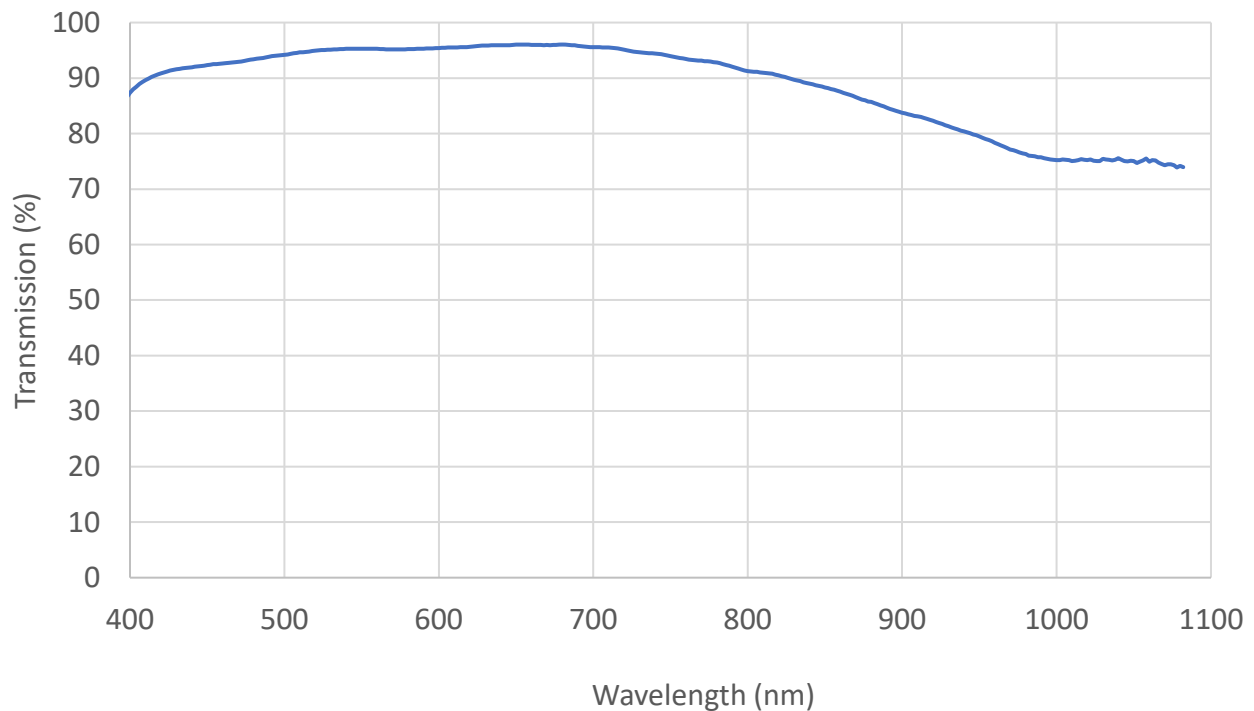
(1) Pupil size at the lens' smallest aperture. For more details, please refer to 'Optical Design Information' and 'Cosmetic Specifications'.

(2) The graph below shows an example of the RMS wave front error in  $\mu\text{m}$  as a function of the optical power of the multi-electrode lens. Measurement is done on an 8mm pupil.



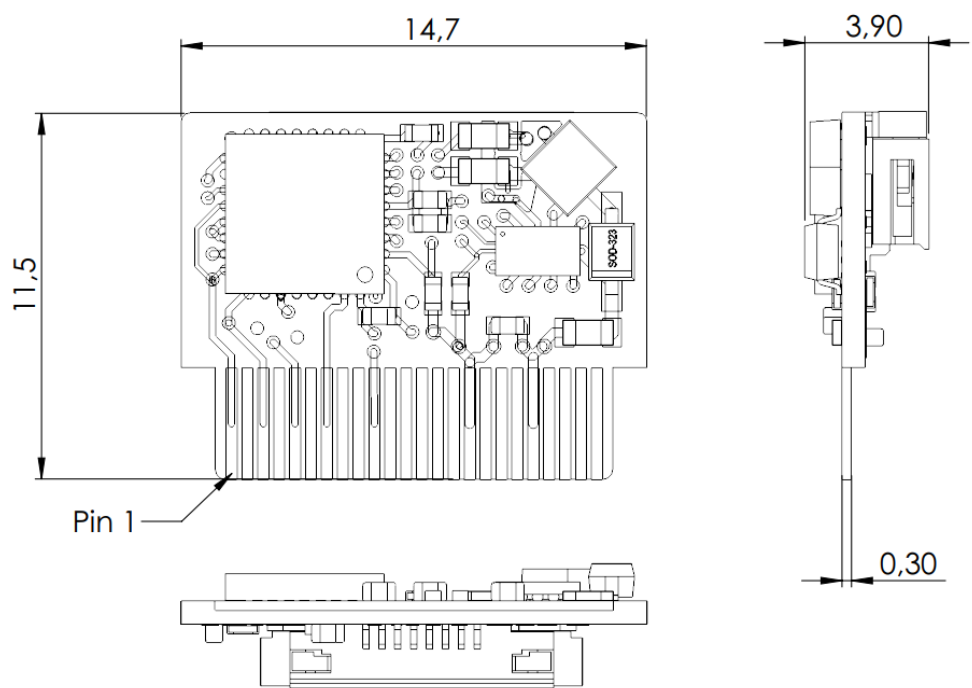
- (3) The low cylinder optical power PCL is available on the PSCL/PSCH range of the sphere. See “Sphere and cylinder range and typical accuracy” for more details.
- (4) Reduced range corresponds to spherical optical power within the range of  $[-4D/+4D]$  and cylinder optical power within the range of  $[0D/-4D]$ .
- (5) The wave-front error of the liquid lens is induced at the interface between the two liquids and mainly due to random astigmatism.

## Transmission curve

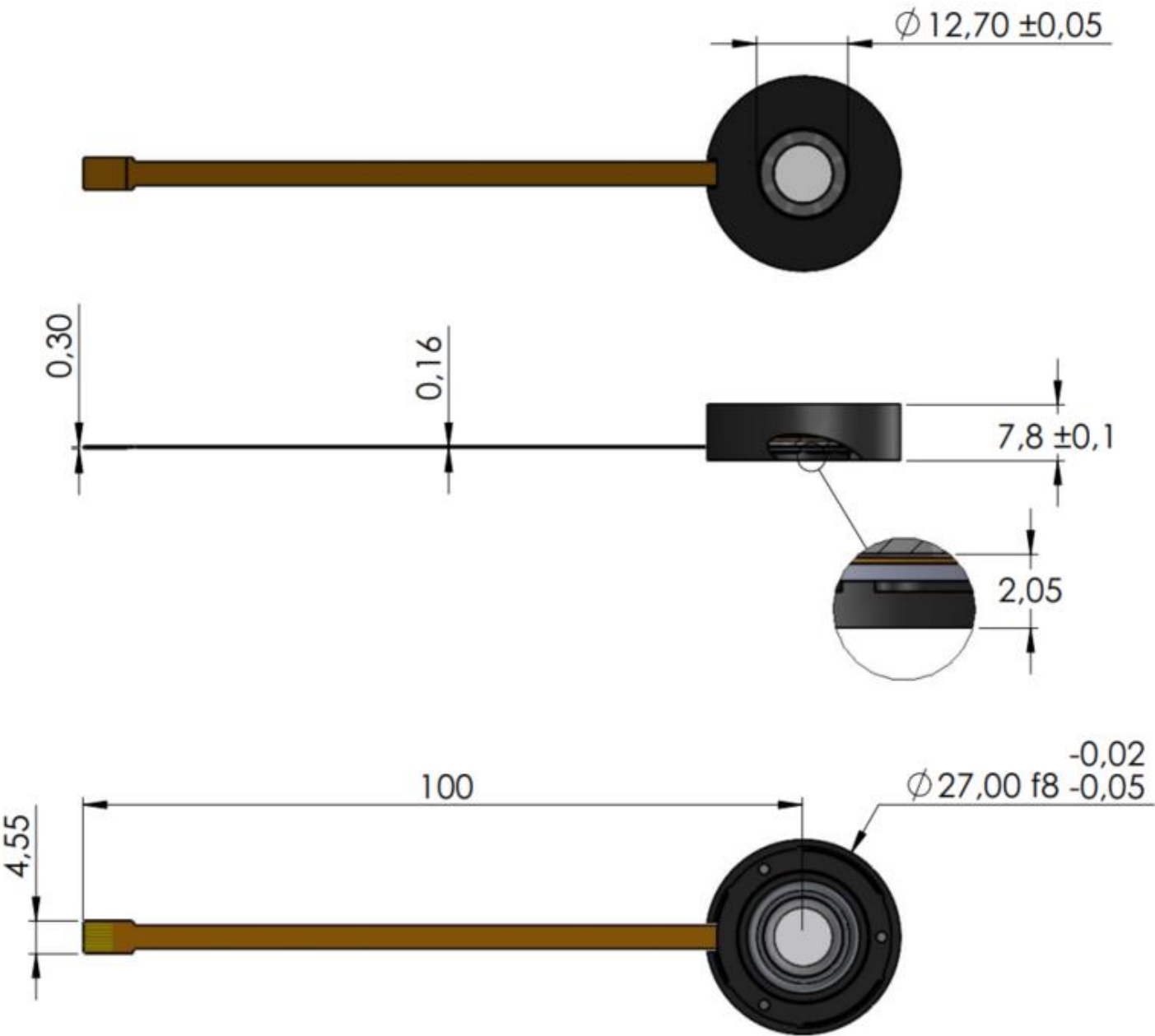


# Mechanical Dimensions

## Electronic board



Packaged Lens



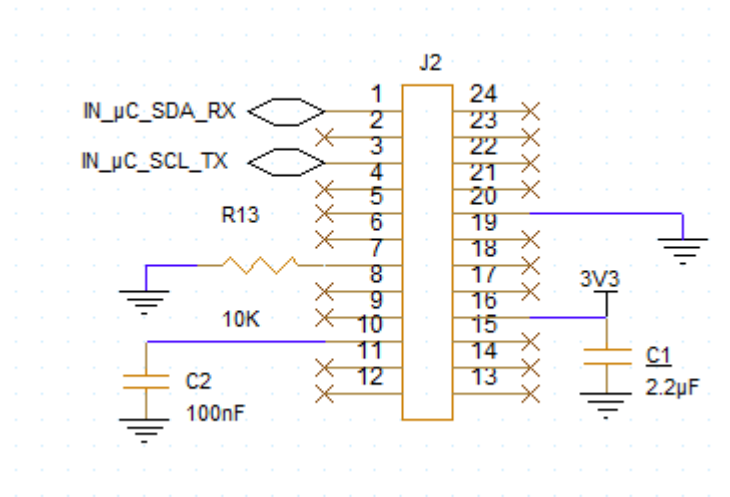
## General Description Of The Board



The V-PE-80R0-07 electronic embeds a 32 bits microcontroller. The chip contains individual lens calibration parameters.

## Connector Pinout

Pin Number	PCB I/O name
1	OUT_I2C_RS232_SDA_RX
2	NC
3	OUT_I2C_RS232_SCL_TX
4	NC
5	SWDIO
6	NC
7	BOOT0
8	NC
9	NC
10	NRST
11	NC
12	NC
13	NC
14	NC
15	NC
16	3,3V
17	NC
18	NC
19	NC
20	GND
21	NC
22	NC
23	NC
24	NC



#### Notes:

- (1) The many unused pin on J2 connector are designed for improving PCB mechanical retention into the customer SMT connector.
- (2) Recommended connector for A-PE Series board is 24 pins ZIF connector 24FLT-SM2-TB(LF)(SN) from JST
- (3) IN\_μC\_SDA\_RX/IN\_μC\_SCL\_TX: Those pins can be used either in I2C or RS232, for I2C pull-ups are already present on the board.
- (4) R13 pull down resistor on pin 7(BOOT0) and C2 decoupling capacitor on pin 10 (Reset) can be optional depending of EMC conditions.

## Absolute Maximum Ratings

Parameter	Symbol	Min	Typ	Max	Unit	Notes
Operating Temperature	T	10	-	40	°C	
Storage Temperature	T <sub>stg</sub>	-40	-	55	°C	

#### Important note:

Corning Varioptic Lenses and electronic boards are sensitive to electrostatic discharge (ESD). Use caution when handling (see chapter on ESD precautions below).

## Electrical Specifications

Parameter	Symbol	Min	Typ	Max	Unit	Notes
<b>Power supply</b>						
Input voltage	V <sub>cc</sub>	3.2	3.3	3.4	V	

## Precaution

## FPC handling

To adjust the FPC shape to a given design, following rules should apply:

- Minimum bending radius: 2 mm
- Minimum cable length to perform a 180° torsion: 55 mm.
- For FPC with thermistor, flexion of the FPC in the thermistor area should be avoided as it can cause cracks in the soldering and/or FPC. If the customer design requires bending the FPC in the thermistor area, the radius of curvature of the bending should not be lower than 5 mm.

For additional information please refer to the document “MAAN - 190903 - FPC Installation Guidelines.pdf”.

## ESD

Liquid lenses and embedded electronics are sensitive to electrostatic discharge (ESD). Users in contact with lenses or electronic boards should be grounded and should use soft-touch, ESD dissipative metal tweezers to avoid scratches. All materials directly in contact with the lenses should also be grounded (tables, benches, etc.) or antistatic/electrically dissipative materials (e.g. trays).

For additional information please refer to the document “MAAN - 200505 - Liquid Lens Handling, Cleaning and Storage.pdf”.

## Safety precautions

In case the liquid lens is placed close to a human eye, we recommend adding a protective window between the user's eye and the liquid lens with a minimum thickness of 1.5mm.

## Register Definition

Field name	Bit	Type	Description
<b>Lens Spherical power</b>			address: 0x0707
SPHERE	[31:0]	Float	Lens spherical power (D)
<b>SW Version</b>			address: 0x0004
VER	[7:0]	Float	Software version: this register indicates the version of the module firmware.
<b>Lens Cylinder power</b>			address: 0x0708
CYLINDER	[31:0]	Float	Lens cylinder power (D)
<b>Lens Axis</b>			address: 0x0706
AXE	[31:0]	Float	Lens axis (°)

## UART Protocol (RS232)

### Hardware settings

Baud rate	57 600 Bds
Parity	No parity
Data length	32 bits
Number of stop bits	1 bit

### Writing frame

STX	0x37	Add_LSB	Add_MSB	Nb_data	Data_1_1	Data_1_2	...	Data_2_1	...	Data_n	CRC
-----	------	---------	---------	---------	----------	----------	-----	----------	-----	--------	-----



**STX** = 0x02  
**0x37** = Write command

#### Add\_LSB

**& Add\_MSB** = Address from first register to be written (if there are several data to write, the address will be automatically incremented).

**Nb\_data** = Number of 32-bits words to be written

**Data\_1** to **n** = Registers value

**CRC** = 1 control byte calculated as follow:  
Sum of all bytes (STX, CDE, ADD, NB\_DATA, DATA)

Ex :

0x02	0x37	0x03	0x00	0x01	0x12	0x34	0x56	0x78	0x51
------	------	------	------	------	------	------	------	------	------

Response of the board if transmission is successful:

STX	0x37	ACK	CRC
-----	------	-----	-----

With ACK = 0x06

Response of the board if transmission is not successful:

STX	0x37	NACK	CRC
-----	------	------	-----

With NACK = 0x15

In this case the application should send again the same frame.

## Reading frame

STX	0x38	Add_LSB	Add_MSB	Nb_data	CRC
-----	------	---------	---------	---------	-----

**STX** = 0x02  
**0x38** = Read command

#### Add\_MSB

**& Add\_LSB** = Address of the first register to be read (if more than one register, the address will be automatically incremented).

**Nb\_data** = Number of 32-bits word to be read

**CRC** = 1 control byte calculated as follow:  
Sum of all bytes (STX, CDE, ADD, NB\_DATA, DATA)

Ex:

0x02	0x38	0x03	0x00	0x01	0x3E
------	------	------	------	------	------

Response if transmission is successful:

STX	0x38	Data_1	Data_2	Data_3	Data_4	CRC
-----	------	--------	--------	--------	--------	-----

Response if transmission is not successful:

STX	0x38	NACK	0x15
-----	------	------	------

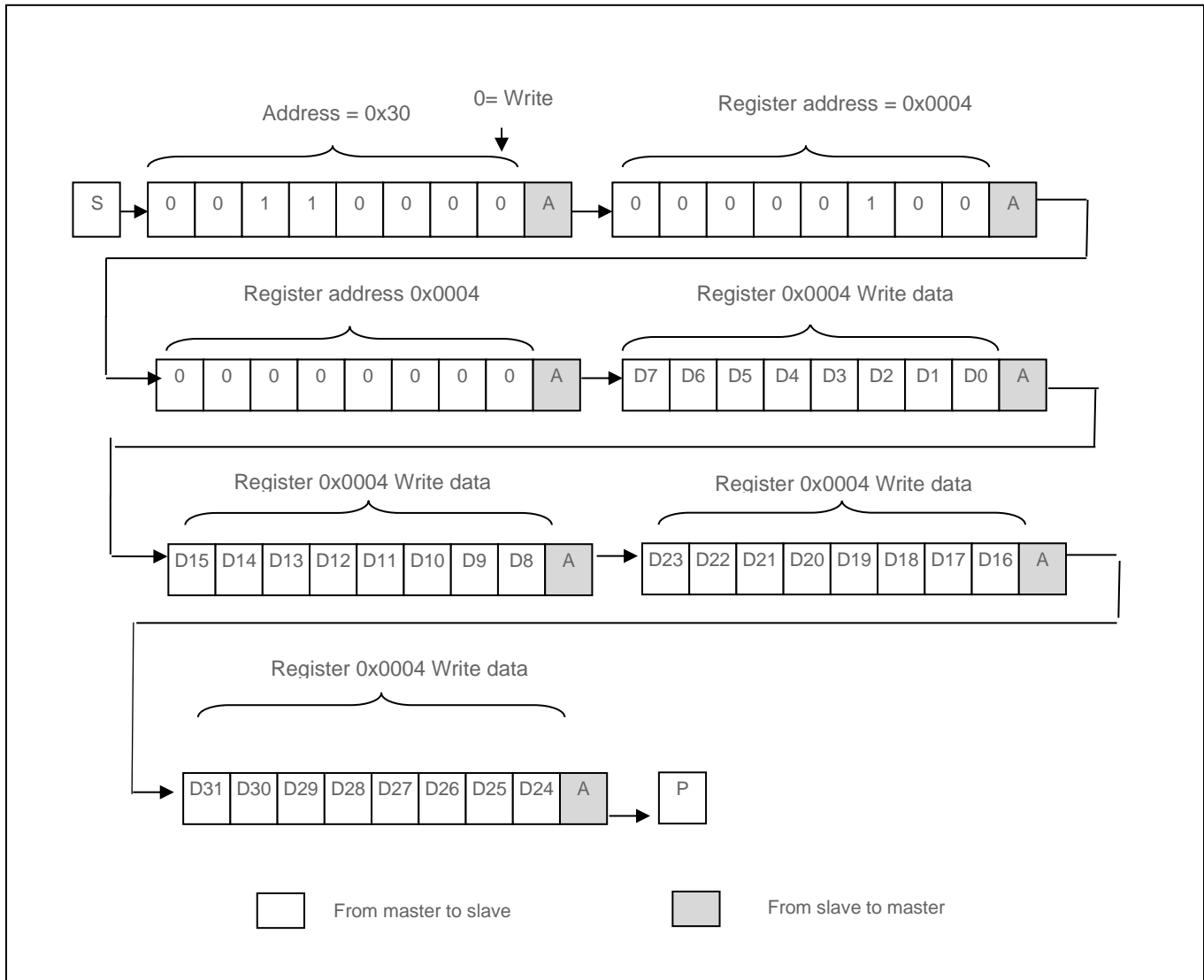
## I2C Protocol

Maximum frequency of SCL is 400 KHz.

The lens is a slave device, its address is 0x30 for writing and 0x31 for reading.

## Writing frame

To write to the device, the master generates a START condition and then transmits the slave address with the R/W bit set to zero, followed by at least one data byte. The 2-first data byte is the register address, which determines which register is to be written. The device asserts an ACK on SDA if a valid register address is detected. 32 bits data received after the register address goes into the selected register. For each additional 32 bits word received from the master, the device auto-increments the register address. After all bytes are written, the master generates a STOP condition. The following examples shows a single-register I2C write.



## Reading frame

To read from the device, the master generates a START condition and then transmits the slave address with the R/W bit set to zero. The master then sends the registers address to be read. After the device asserts an ACK on SDA, the master sends a repeated START condition followed by the slave address with the R/W bit set to one. The device then sends an ACK followed by the bytes contained in the register. The device auto increments the register address, and, if the master asserts an ACK, the device sends the next bytes. To end the read transaction, the master must generate a NACK followed by a STOP condition.



Corning reserves the right to change its product specifications at any time without notice. Please ensure you have the latest applicable specification before purchasing a Corning product. Corning does not provide any warranty of merchantability or fitness for a particular purpose. Additionally, the products sold by Corning are not designed, intended or authorized for use in life support, life sustaining, medical device, healthcare, nuclear, military, or any applications in which the failure of such products could reasonably be expected to result in personal injury, loss of life or catastrophic property or environmental damage. Corning does not make any claims or statements that our products have been approved for such applications. Further, Corning has not tested its products for safety and efficacy in any such applications. The customer is responsible for determining the suitability of Corning's product for its application, including any testing, validation, and/or regulatory submissions that may be required to support the safety and efficacy of its intended use. Product specifications are available upon request at [varioptic@corning.com](mailto:varioptic@corning.com)