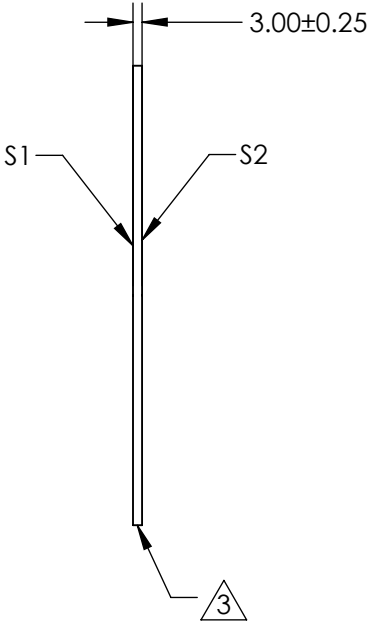
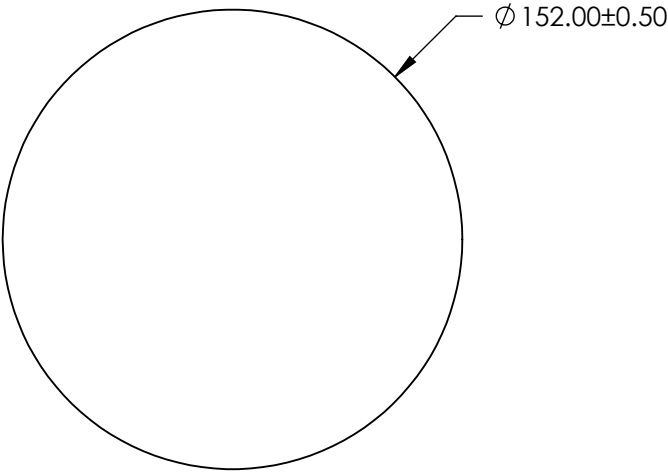
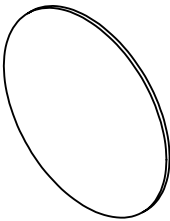



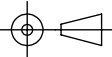
- NOTES:
- 1. SUBSTRATE: FLOAT GLASS
 - 2. COATING (APPLY ACROSS CLEAR APERTURE)

S1 & S2: BBAR (425-700nm)
R(AVG) ≤0.5% @ 425 - 700nm
 - 3. FINE GRIND SURFACE
 - 4. ROHS COMPLIANT



**FOR INFORMATION ONLY:
DO NOT MANUFACTURE
PARTS TO THIS DRAWING**

SPECIFICATIONS SUBJECT TO CHANGE WITHOUT NOTICE
DIMENSIONS ARE FOR REFERENCE ONLY

	S1	S2	 Edmund Optics®			
SHAPE	PLANO	PLANO		TITLE	152.4mm Dia. x 3mm High Efficiency Window	
SURFACE QUALITY	80 - 50	80 - 50				
CLEAR APERTURE	Ø 137.16	Ø 137.16				
BEVEL	PROTECTED AS NEEDED	PROTECTED AS NEEDED	ALL DIMS IN	mm	DWG NO	71579
						SHEET 16 OF 18