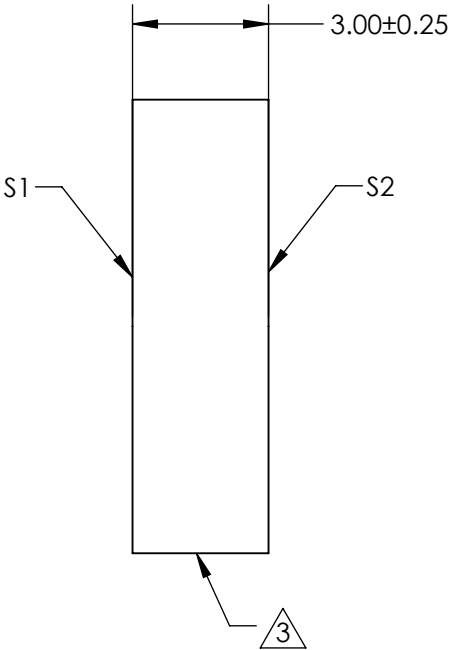
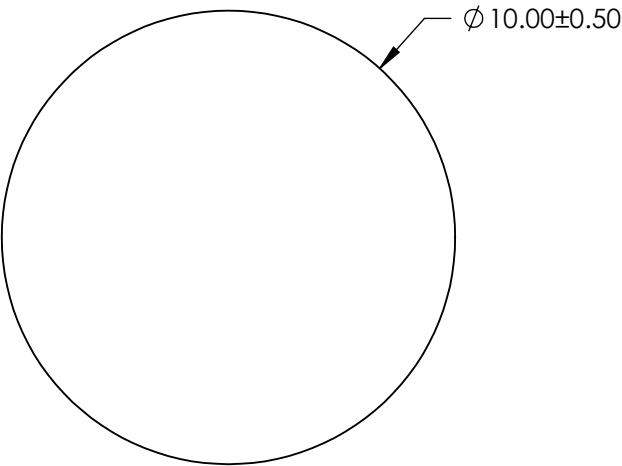
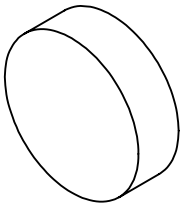


- NOTES:
- 1. SUBSTRATE: FLOAT GLASS
 - 2. COATING (APPLY ACROSS CLEAR APERTURE)

S1 & S2: BBAR (425-700nm)
R(AVG) ≤0.5% @ 425 - 700nm
 - 3. FINE GRIND SURFACE
 - 4. ROHS COMPLIANT




**FOR INFORMATION ONLY:
DO NOT MANUFACTURE
PARTS TO THIS DRAWING**

SPECIFICATIONS SUBJECT TO CHANGE WITHOUT NOTICE
DIMENSIONS ARE FOR REFERENCE ONLY

| | S1 | S2 |
|-----------------|---------------------|---------------------|
| SHAPE | PLANO | PLANO |
| SURFACE QUALITY | 80 - 50 | 80 - 50 |
| CLEAR APERTURE | Ø 9.00 | Ø 9.00 |
| BEVEL | PROTECTED AS NEEDED | PROTECTED AS NEEDED |

THIRD ANGLE
PROJECTION

ALL DIMS IN mm

 **Edmund Optics®**

| | | |
|--------|--|------------------|
| TITLE | 10mm Dia. x 3mm High Efficiency Window | |
| DWG NO | 71567 | SHEET 4 OF 18 |