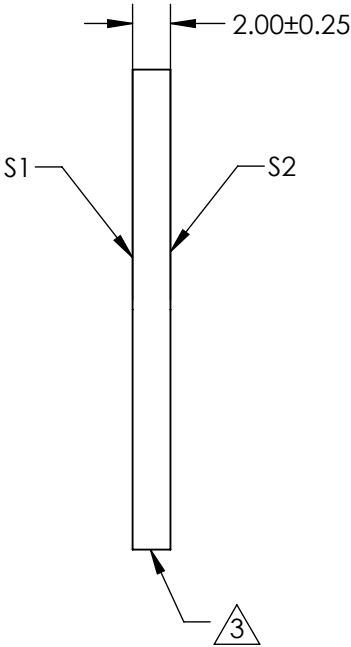
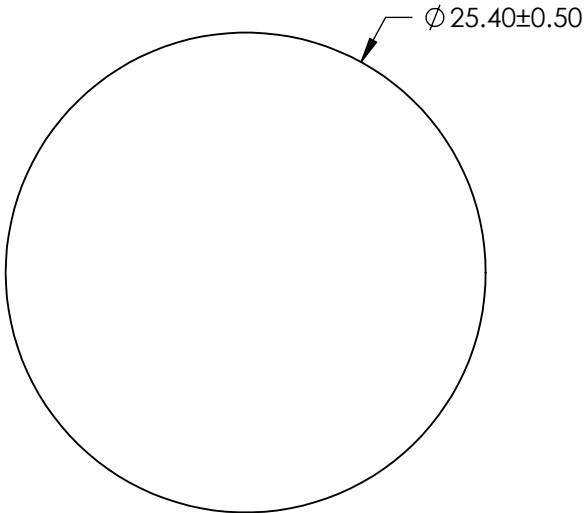
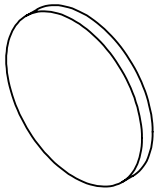


- NOTES:
- 1. SUBSTRATE: FLOAT GLASS
 - 2. COATING (APPLY ACROSS CLEAR APERTURE)

S1 & S2: BBAR (425-700nm)
R(AVG) ≤0.5% @ 425 - 700nm
 - 3. FINE GRIND SURFACE
 - 4. ROHS COMPLIANT



**FOR INFORMATION ONLY:
DO NOT MANUFACTURE
PARTS TO THIS DRAWING**

SPECIFICATIONS SUBJECT TO CHANGE WITHOUT NOTICE
DIMENSIONS ARE FOR REFERENCE ONLY

	S1	S2
SHAPE	PLANO	PLANO
SURFACE QUALITY	80 - 50	80 - 50
CLEAR APERTURE	Ø 22.86	Ø 22.86
BEVEL	PROTECTED AS NEEDED	PROTECTED AS NEEDED



ALL DIMS IN mm

EO® Edmund Optics®

TITLE	25.4mm Dia. x 2mm High Efficiency Window		
DWG NO	71591	SHEET 2 OF 7	