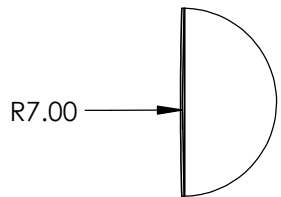
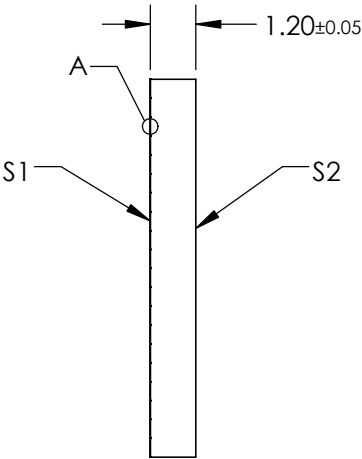
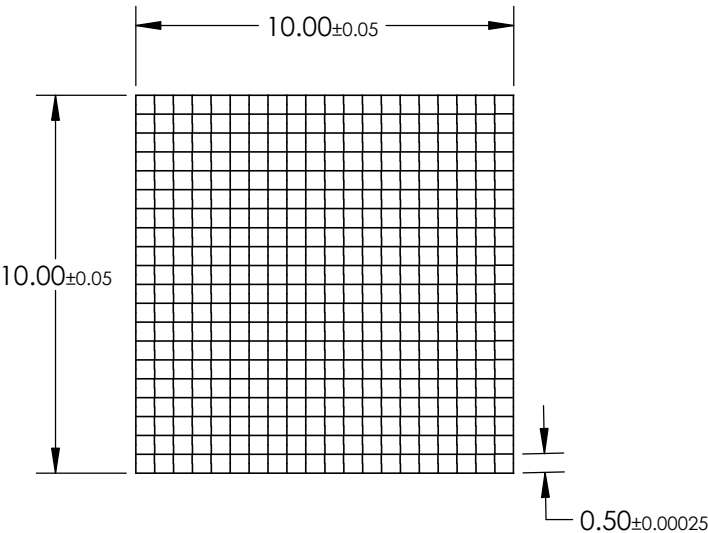


NOTES:

- 1. SUBSTRATE:  
Fused Silica
- 2. COATING (APPLY ACROSS COATING APERTURE):  
S1 & S2: VIS 0° (425-675nm)  
R(AVG) ≤0.4% @ 425 - 675nm
- 3. EFFECTIVE FOCAL LENGTH: 15.3mm
- 4. DIVERGENCE ANGLE: ±1 °
- 5. WAVELENGTH RANGE (nm): 250 - 700
- 6. ROHS: COMPLIANT


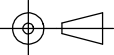


DETAIL A



SPECIFICATIONS SUBJECT TO CHANGE WITHOUT NOTICE  
DIMENSIONS ARE FOR REFERENCE ONLY

**FOR INFORMATION ONLY:  
DO NOT MANUFACTURE  
PARTS TO THIS DRAWING**

 Edmund Optics®			
THIRD ANGLE PROJECTION 		TITLE	MicroLens Array 10 x 10mm, 500µm Pitch, 1° Divergence, VIS 0° Coated
ALL DIMS IN	mm	DWG NO	72245
			SHEET 1 OF 1