

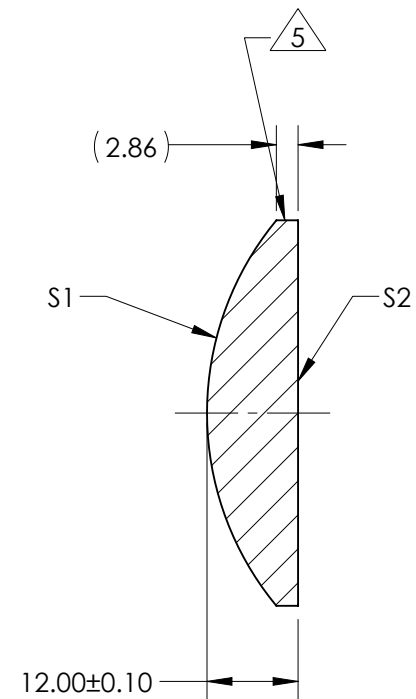
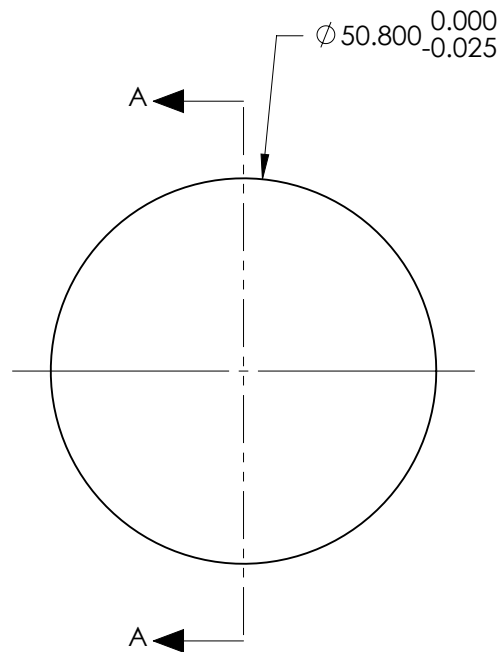
NOTES:

1. SUBSTRATE:  
N-SF11 785/258
2. ROHS COMPLIANT
3. CENTERING TOLERANCE (AT 587.6nm):  
BEAM DEVIATION (HALF ANGLE): <1 ARCMIN
4. COATING (APPLY ACROSS COATING APERTURE)

S1 & S2: NIR II  
 $R(ABS) \leq 1.5\%$  FROM 750 - 800nm @ 0° AOI  
 $R(ABS) \leq 1.0\%$  FROM 800 - 1550nm @ 0° AOI  
 $R(AVG) \leq 0.7\%$  FROM 750 - 1550nm @ 0° AOI

 FINE GRIND SURFACE

6. POWER, IRREGULARITY, AND SURFACE QUALITY SPECIFICATIONS APPLY ACROSS CLEAR APERTURE
7. FOCAL LENGTH (EFL): 50.81mm±1%  
BACK FOCAL LENGTH (BFL): 44.08mm
8. PROTECTIVE BEVEL AS NEEDED
9. DESIGN WAVELENGTH: 587.6nm



SECTION A-A

**FOR INFORMATION ONLY:**  
**DO NOT MANUFACTURE**  
**PARTS TO THIS DRAWING**

|                         | S1         | S2         |
|-------------------------|------------|------------|
| SHAPE                   | CONVEX     | PLANO      |
| RADIUS                  | 39.87      | INFINITY   |
| SURFACE QUALITY         | 40 - 20    | 40 - 20    |
| MIN CLEAR APERTURE      | Ø 49.30    | Ø 49.30    |
| MIN COATING APERTURE    | Ø 49.80    | Ø 49.80    |
| POWER AT 632.8nm        | 3.00 RINGS | 3.00 RINGS |
| IRREGULARITY AT 632.8nm | 0.50 RINGS | 0.50 RINGS |

SPECIFICATIONS SUBJECT TO CHANGE WITHOUT NOTICE  
 DIMENSIONS ARE FOR REFERENCE ONLY

 **Edmund Optics®**

|  |        |  |                 |
|--|--------|--|-----------------|
| THIRD ANGLE<br>PROJECTION<br> | TITLE  | 50.8mm Dia x 50.8079mm FL, NIR II<br>Coated, Plano-Convex Lens |                 |
|  | DWG NO | 71338  | SHEET<br>1 OF 1 |

ALL DIMS IN mm