

NOTES:

- 1. SUBSTRATE:  
ZERODUR
- 2. S2 TO BE PARALLEL TO S1 TO WITHIN <30 ARCSEC
- 3. COATING (APPLY ACROSS CLEAR APERTURE)  
S1: Protected Gold (700-10000nm)  
Ravg >96% @ 700 - 2000nm  
Ravg >96% @ 2000 - 10,000nm  
S2: NONE

4. FINE GRIND SURFACE

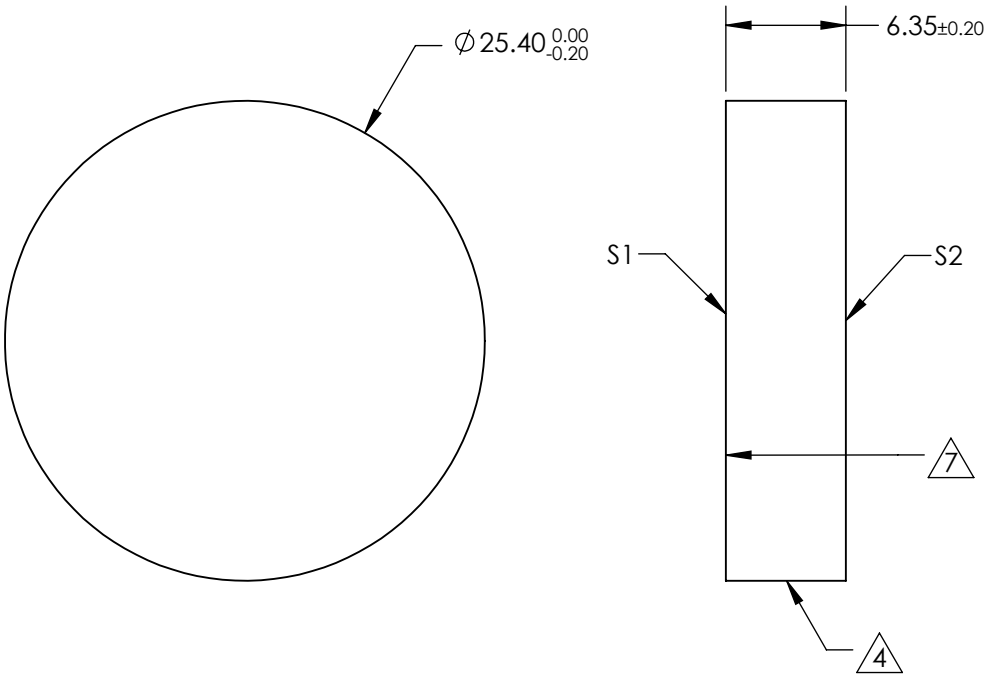
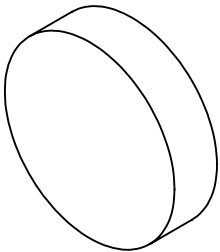
- 5. CLEAR APERTURE AND COATING APERTURE ARE CENTERED ON SURFACE.
- 6. SURFACE QUALITY SPECIFICATIONS APPLY ACROSS CLEAR APERTURE

7. ARROW ON EDGE POINTS TOWARDS 1/10TH WAVE SURFACE S1


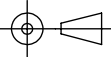
- 8. COEFFICIENT OF THERMAL EXPANSION CTE (10^-6/°C): 0.1
- 9. ROHS COMPLIANT

**FOR INFORMATION ONLY:  
DO NOT MANUFACTURE  
PARTS TO THIS DRAWING**

SPECIFICATIONS SUBJECT TO CHANGE WITHOUT NOTICE  
DIMENSIONS ARE FOR REFERENCE ONLY



	S1	S2
SHAPE	PLANO	PLANO
SURFACE QUALITY	20 - 10	COMMERCIAL POLISH
SURFACE FLATNESS	$\lambda/10$	N/A
CLEAR APERTURE	$\varnothing 22.86$	N/A
COATING APERTURE	$\varnothing 22.86$	N/A
BEVEL	PROTECTED AS NEEDED	PROTECTED AS NEEDED

 Edmund Optics®			
THIRD ANGLE PROJECTION 		TITLE	25.4mm Dia. Protected Gold Coated, $\lambda/10$ ZERODUR® Mirror
ALL DIMS IN	mm	DWG NO	17756
			SHEET 11 OF 16