

NOTES:

1. SUBSTRATE:
ZERODUR
2. S2 TO BE PARALLEL TO S1 TO WITHIN <30 ARCSEC
3. COATING (APPLY ACROSS CLEAR APERTURE)
S1: Protected Silver (450-10000nm)
Ravg >98% @ 450 - 2000nm
Ravg >98% @ 2000 - 10,000nm
S2: NONE

4. FINE GRIND SURFACE

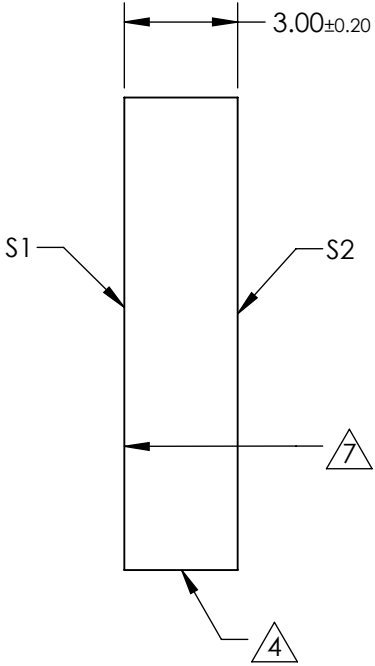
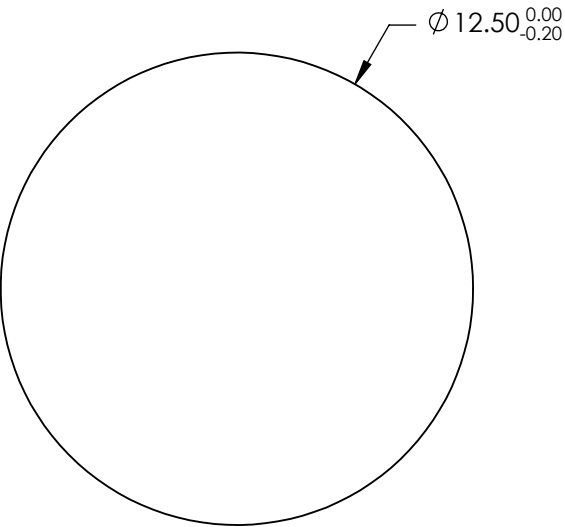
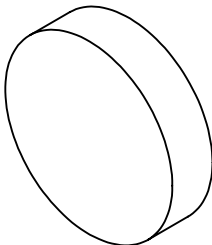
5. CLEAR APERTURE AND COATING APERTURE ARE CENTERED ON SURFACE.
6. SURFACE QUALITY SPECIFICATIONS APPLY ACROSS CLEAR APERTURE

7. ARROW ON EDGE POINTS TOWARDS 1/10TH WAVE SURFACE S1


8. COEFFICIENT OF THERMAL EXPANSION CTE (10⁻⁶/°C): 0.1
9. ROHS COMPLIANT

**FOR INFORMATION ONLY:
DO NOT MANUFACTURE
PARTS TO THIS DRAWING**

SPECIFICATIONS SUBJECT TO CHANGE WITHOUT NOTICE
DIMENSIONS ARE FOR REFERENCE ONLY



	S1	S2
SHAPE	PLANO	PLANO
SURFACE QUALITY	20 - 10	COMMERCIAL POLISH
SURFACE FLATNESS	$\lambda/10$	N/A
CLEAR APERTURE	$\varnothing 11.25$	N/A
COATING APERTURE	$\varnothing 11.25$	N/A
BEVEL	PROTECTED AS NEEDED	PROTECTED AS NEEDED

 Edmund Optics®			
THIRD ANGLE PROJECTION 		TITLE	12.5mm Dia. Protected Silver Coated, $\lambda/10$ ZERODUR® Mirror
ALL DIMS IN	mm	DWG NO	17735
			SHEET 8 OF 16