

NOTES:

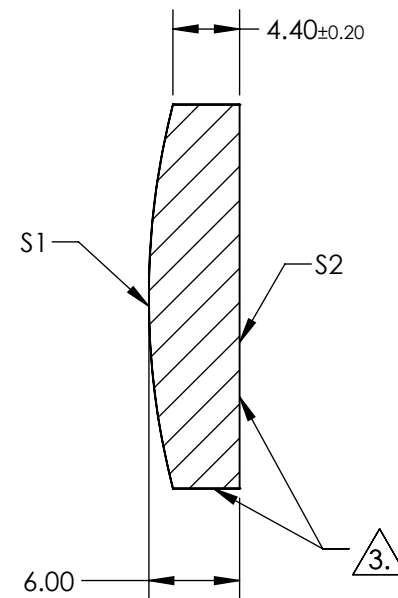
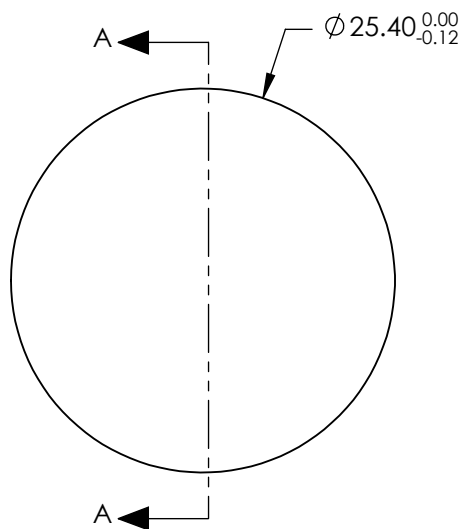
1. SUBSTRATE:
FUSED SILICA

2. COATING (APPLY ACROSS CLEAR APERTURE)
S1 & S2: NONE

3. FINE GRIND SURFACE

- #### 4. POWER, IRREGULARITY, AND SURFACE QUALITY SPECIFICATIONS APPLY ACROSS CLEAR APERTURE

- ## 5. ROHS COMPLIANT



**FOR INFORMATION ONLY:
DO NOT MANUFACTURE
PARTS TO THIS DRAWING**

SPECIFICATIONS SUBJECT TO CHANGE WITHOUT NOTICE
DIMENSIONS ARE FOR REFERENCE ONLY

	S1	S2
SHAPE	CONVEX	PLANO
RADIUS	50	INFINITY
SURFACE QUALITY	20-10	N/A
CLEAR APERTURE	Ø 22.86	N/A
IRREGULARITY AT 632.8nm	λ/10	N/A
BEVEL	PROTECTED AS NEEDED	PROTECTED AS NEEDED



ALL DIMS IN

mm



TITLE

25.4mm Dia. x 50mm ROC, Uncoated,
Convex Laser Mirror

DWG NO

27623

SHEET
8 OF 27