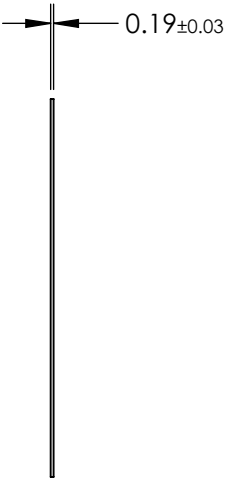
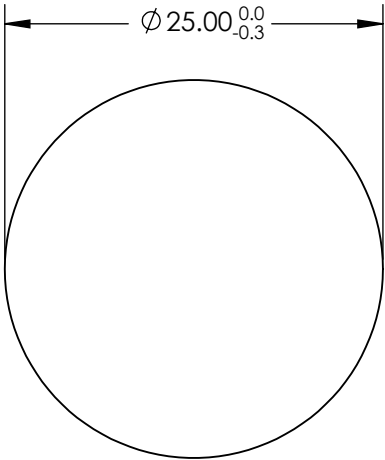
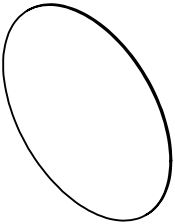


- NOTES:
- 1. SUBSTRATE: Polymer Film XP42-18
 - 2. WAVELENGTH RANGE: 400 - 700 nm
 - 3. POLARIZATION EFFICIENCY (%):
>99.98 (nominal at 555nm)
 - 4. TRANSMISSION (%):
SINGLE: 42 ±2
PARALLEL: 36.4
CROSSED: <0.004 (nominal at 555nm)
 - 5. EXTINCTION RATIO: 9000:1 (nominal at 555nm)
 - 7. ROHS COMPLIANT



**FOR INFORMATION ONLY:
DO NOT MANUFACTURE
PARTS TO THIS DRAWING**

SPECIFICATIONS SUBJECT TO CHANGE WITHOUT NOTICE
DIMENSIONS ARE FOR REFERENCE ONLY

THIRD ANGLE PROJECTION		Edmund Optics®		
ALL DIMS IN		TITLE	25mm Dia. Linear Polarizing Film (XP42-18)	
mm	DWG NO	29489	SHEET 8 OF 12	