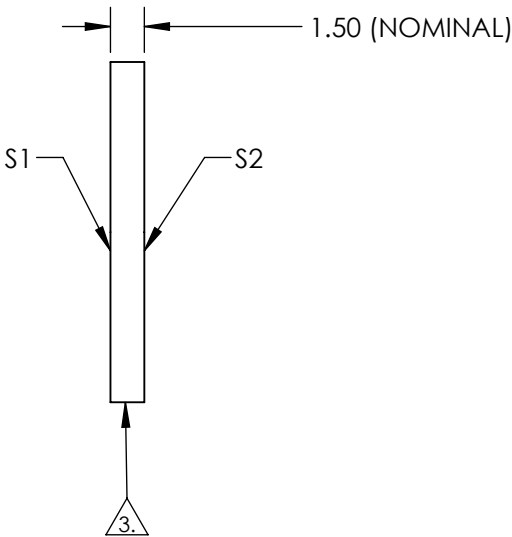
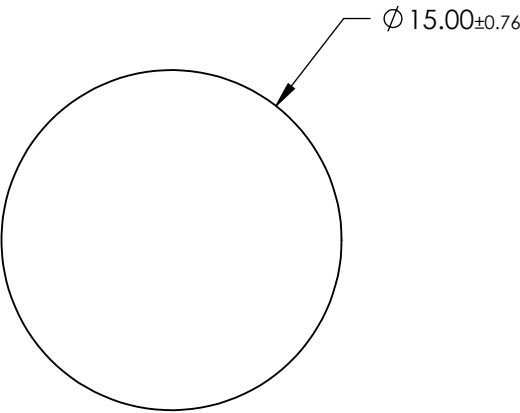


NOTES:

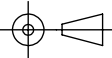

- 1. SUBSTRATE: Float Glass
- 2. COATING (APPLY ACROSS CLEAR APERTURE)
  - S1: Protected Aluminum (400-700nm)
  - R(AVG) >85% @ 400 - 700nm @ 45°
  - S2: NONE
- 3. GROUND EDGES
- 4. RoHS COMPLIANT



**FOR INFORMATION ONLY:**  
**DO NOT MANUFACTURE**  
**PARTS TO THIS DRAWING**

SPECIFICATIONS SUBJECT TO CHANGE WITHOUT NOTICE  
DIMENSIONS ARE FOR REFERENCE ONLY

	S1	S2
SHAPE	PLANO	PLANO
SURFACE QUALITY	80-50	N/A
SURFACE FLATNESS	4 - 6λ	N/A
CLEAR APERTURE	Ø 13.50	N/A
BEVEL	PROTECTED AS NEEDED	PROTECTED AS NEEDED

THIRD ANGLE PROJECTION 		 <b>Edmund Optics®</b>	
TITLE		15mm Diameter, 4-6λ Mirror	
ALL DIMS IN	mm	DWG NO	31006
			SHEET 1 OF 1