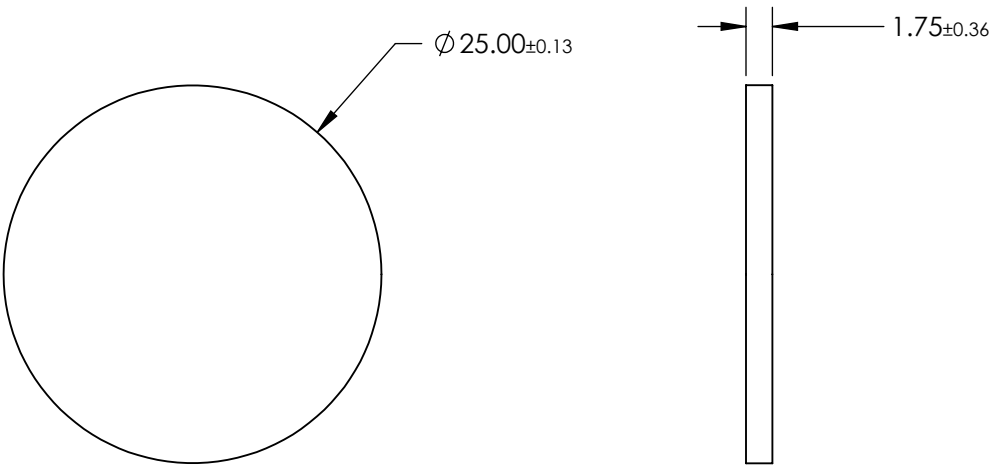


NOTES:

- 1. SUBSTRATE:  
PMMA, PERMANENTLY LAMINATED TO PET FILM WITH HARD MICROSTRUCTURED POLYMER COATING
- 2. TYPE OF DIFFUSER: Linear Batwing Diffuser
- 3. DIFFUSING ANGLE (°): 127
- 4. OPERATING TEMPERATURE (°C): -34 to +70
- 5. **FOR OPTIMAL PERFORMANCE, GLOSSY, NON-MATTE SIDE SHOULD FACE INCIDENT LIGHT.**



SPECIFICATIONS SUBJECT TO CHANGE WITHOUT NOTICE  
DIMENSIONS ARE FOR REFERENCE ONLY

**FOR INFORMATION ONLY:  
DO NOT MANUFACTURE  
PARTS TO THIS DRAWING**

**EO<sup>®</sup> Edmund Optics<sup>®</sup>**

THIRD ANGLE PROJECTION 		TITLE	25mm Dia., 127° Diffusion Angle, Linear Batwing Diffuser	
ALL DIMS IN	mm	DWG NO	28929	SHEET 1 OF 1