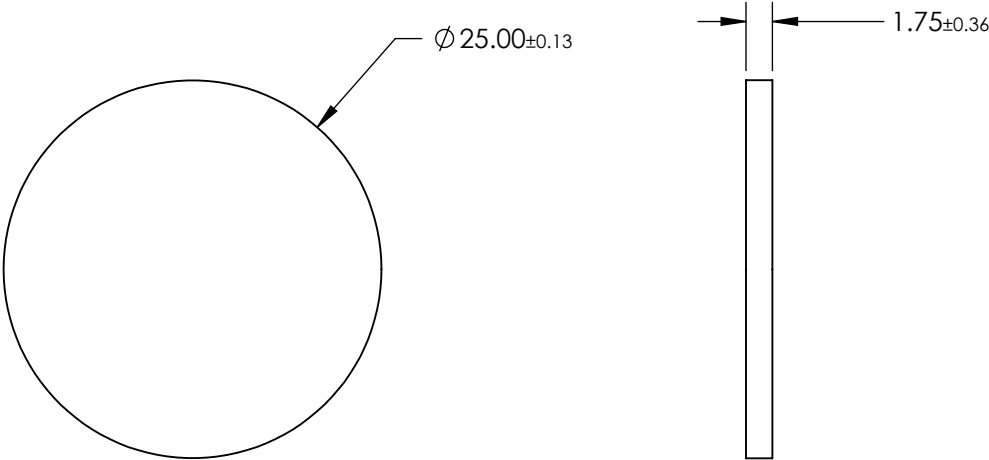



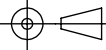
NOTES:

- 1. SUBSTRATE:
PMMA, PERMANENTLY LAMINATED TO PET FILM WITH HARD MICROSTRUCTURED POLYMER COATING
- 2. TYPE OF DIFFUSER: Linear Batwing Diffuser
- 3. DIFFUSING ANGLE (°): 120
- 4. OPERATING TEMPERATURE (°C): -34 to +70
- 5. **FOR OPTIMAL PERFORMANCE, GLOSSY, NON-MATTE SIDE SHOULD FACE INCIDENT LIGHT.**



SPECIFICATIONS SUBJECT TO CHANGE WITHOUT NOTICE
DIMENSIONS ARE FOR REFERENCE ONLY

**FOR INFORMATION ONLY:
DO NOT MANUFACTURE
PARTS TO THIS DRAWING**

 Edmund Optics®			
THIRD ANGLE PROJECTION 		TITLE	25mm Dia., 120° Diffusion Angle, Linear Batwing Diffuser
ALL DIMS IN	mm	DWG NO	28927
			SHEET 1 OF 1