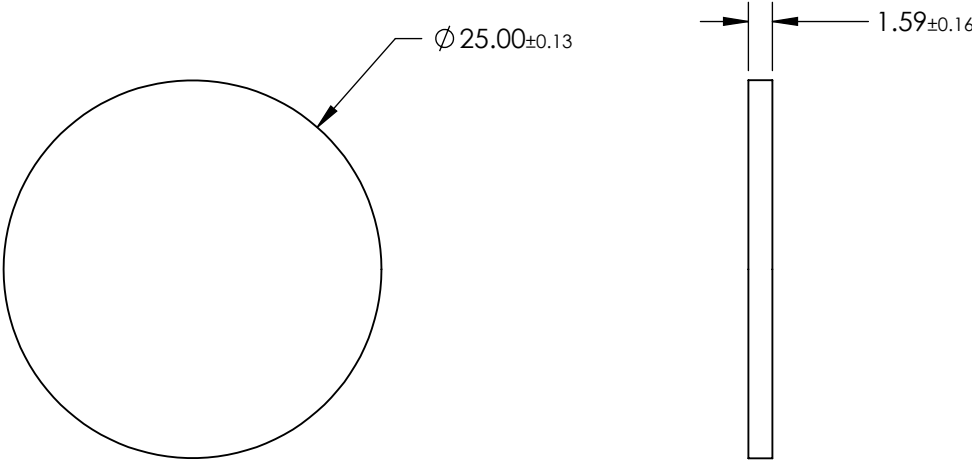


NOTES:

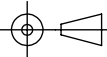
- 1. SUBSTRATE:
PMMA, PERMANENTLY LAMINATED TO PET FILM WITH HARD MICROSTRUCTURED POLYMER COATING
- 2. TYPE OF DIFFUSER: Angle Bending Diffuser
- 3. DIFFUSING ANGLE (°): 5 x 5, with 21° Angle Bend
- 4. OPERATING TEMPERATURE (°C): -34 to +70



SPECIFICATIONS SUBJECT TO CHANGE WITHOUT NOTICE
DIMENSIONS ARE FOR REFERENCE ONLY

**FOR INFORMATION ONLY:
DO NOT MANUFACTURE
PARTS TO THIS DRAWING**

EO[®] Edmund Optics[®]

| | | | | |
|--|----|--------|---|-----------------|
| THIRD ANGLE PROJECTION  | | TITLE | 25mm Dia., 21° Bend Angle, Angle Bending Diffuser | |
| ALL DIMS IN | mm | DWG NO | 28926 | SHEET 1 OF 1 |