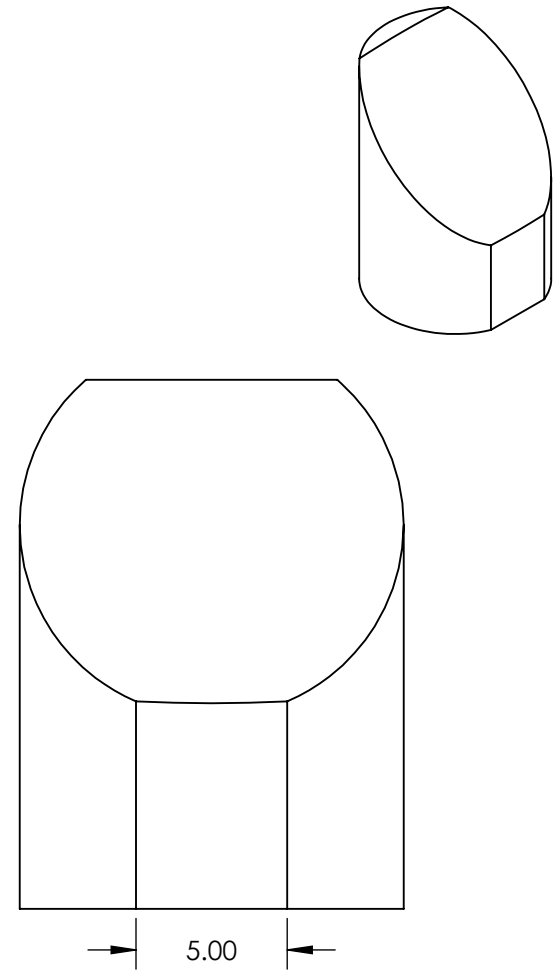
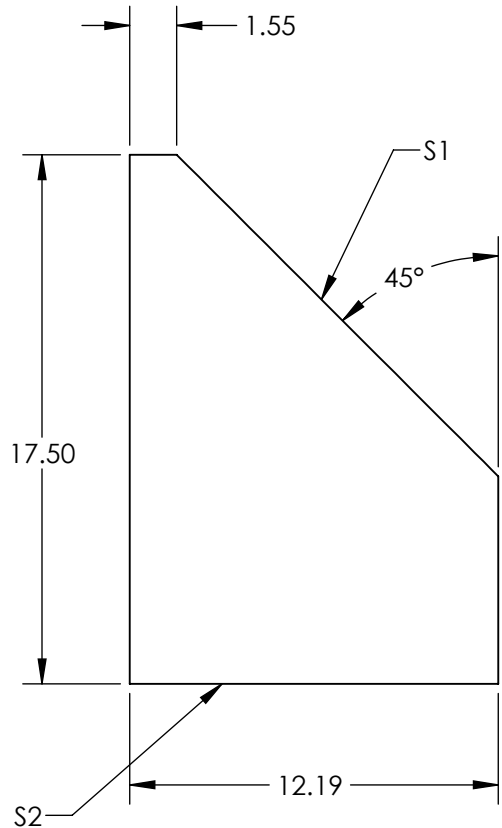


- NOTES:
- 1. SUBSTRATE:
UV FUSED SILICA
 - 2. COATING (APPLY ACROSS CLEAR APERTURE)

S1&S2: NONE
SURFACE ROUGHNESS: <10 Å RMS
 - 3. FOCAL LENGTH TOLERANCE: ±1%
 - 4. ROHS COMPLIANT




**FOR INFORMATION ONLY:
DO NOT MANUFACTURE
PARTS TO THIS DRAWING**

SPECIFICATIONS SUBJECT TO CHANGE WITHOUT NOTICE
DIMENSIONS ARE FOR REFERENCE ONLY

	S1
SHAPE	PARABOLIC
SURFACE FIGURE AT 632.8nm (RMS)	$\lambda/8$
CLEAR APERTURE	90%
BEVEL	PROTECTED AS NEEDED

THIRD ANGLE PROJECTION

ALL DIMS IN mm

 Edmund Optics®			
TITLE	12.7 x 50.8mm EFL 90° Uncoated Glass Off-Axis Parabolic Mirror		
DWG NO	18658	SHEET 1 OF 1	