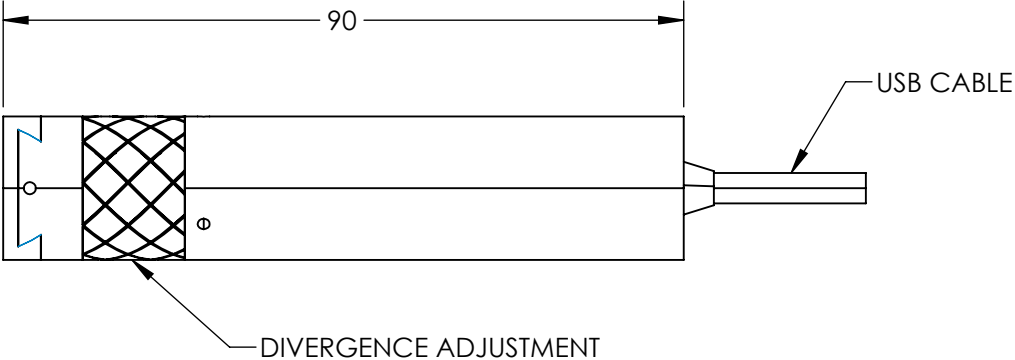
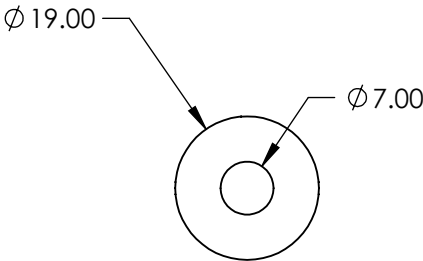


NOTES:

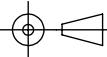
1. LASER CLASS:
2. BEAM DIAMETER:
BEAM DIVERGENCE:
3. MODULATION FREQUENCY:
4. OPERATING TEMPERATURE: °C
OPERATING VOLTAGE:
5. OUTPUT POWER: mW
6. WAVELENGTH: nm



SPECIFICATIONS SUBJECT TO CHANGE WITHOUT NOTICE
DIMENSIONS ARE FOR REFERENCE ONLY

**FOR INFORMATION ONLY:
DO NOT MANUFACTURE
PARTS TO THIS DRAWING**

EO[®] Edmund Optics[®]

THIRD ANGLE PROJECTION 		TITLE		
ALL DIMS IN	mm	DWG NO	Default	SHEET 1 OF 1