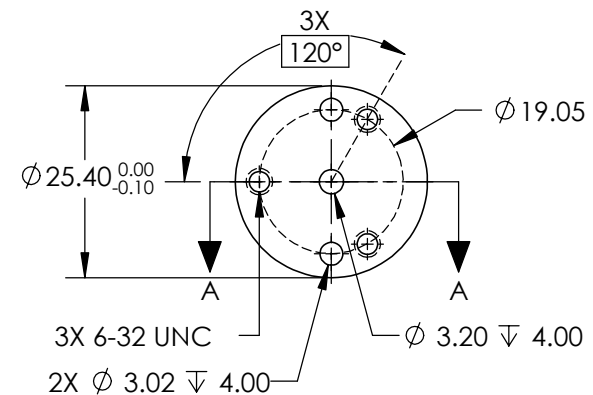
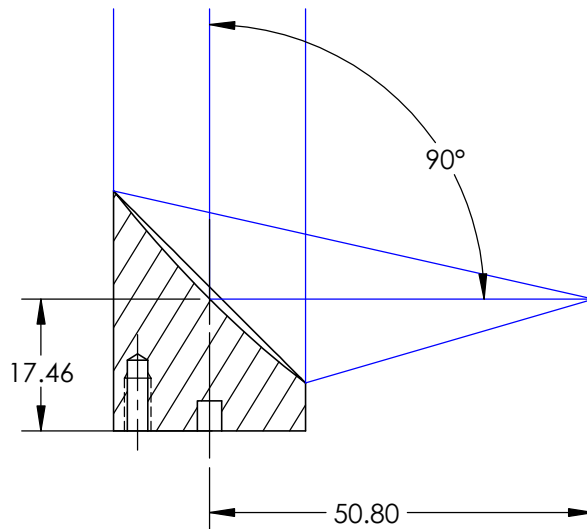
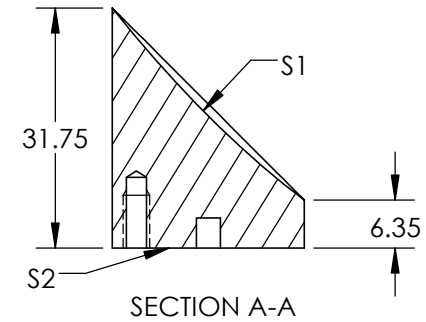
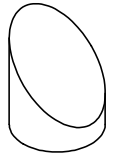


NOTES:

1. SUBSTRATE MATERIAL:
ALUMINUM
2. FINISH (EXCEPT SURFACE S1 & S2):
BLACK ANODIZED
3. COATING (APPLY ACROSS CLEAR APERTURE)
S1: DUV ENHANCED ALUMINUM (190-900nm)
R(AVG) $\geq 92\%$ @ 190 - 250nm
R(AVG) $\geq 83\%$ @ 250 - 900nm
4. SURFACE ROUGHNESS: $< 50 \text{ \AA RMS}$
5. FOCAL LENGTH TOLERANCE: $\pm 1\%$
6. ROHS COMPLIANT

**FOR INFORMATION ONLY:
DO NOT MANUFACTURE
PARTS TO THIS DRAWING**



SPECIFICATIONS SUBJECT TO CHANGE WITHOUT NOTICE
DIMENSIONS ARE FOR REFERENCE ONLY

	S1
SHAPE	PARABOLIC
SURFACE FIGURE AT 632.8nm (RMS)	$\lambda/8$
CLEAR APERTURE	90%
BEVEL	PROTECTIVE AS NEEDED



ALL DIMS IN

mm

Edmund Optics®

TITLE

25.4mm Dia. x 50.8mm EFL, Enhanced Deep
UV (DUV) 90°Off-Axis Mirror

DWG NO

25466

SHEET
1 OF 1