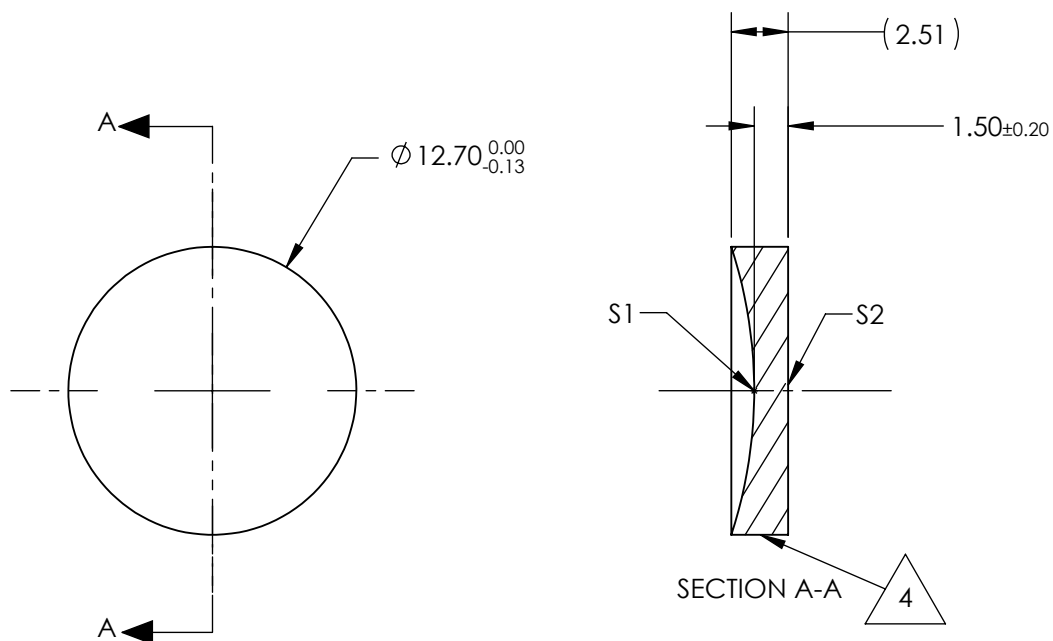


NOTES:

1. SUBSTRATE:
Calcium Fluoride, IR Grade (CaF₂)
2. CENTERING TOLERANCE:
<3 ARCMIN
3. COATING (APPLY ACROSS CLEAR APERTURE)
S1 & S2: NONE
4. FINE GRIND SURFACE
5. FOCAL LENGTH TOLERANCE: ±2%
6. ROHS COMPLIANT



**FOR INFORMATION ONLY:
DO NOT MANUFACTURE
PARTS TO THIS DRAWING**

SPECIFICATIONS SUBJECT TO CHANGE WITHOUT NOTICE
DIMENSIONS ARE FOR REFERENCE ONLY

	S1	S2	EFL @ 5μm	-50.8	 Edmund Optics®		
SHAPE	CONCAVE	PLANO	BFL @ 5μm	-52.36			
RADIUS	20.46	INFINITY			TITLE	12.7mm Dia. x 50.8mm FL, Uncoated, ISP Optics Calcium Fluoride (CaF ₂) PCV Lens	
IRREGULARITY AT 632.8nm	λ	λ					
SURFACE QUALITY	60-40	60-40	ALL DIMS IN		DWG NO	24779	
CLEAR APERTURE	ø11.43	ø11.43					
BEVEL	PROTECTED AS NEEDED	PROTECTED AS NEEDED	mm				SHEET 1 OF 1