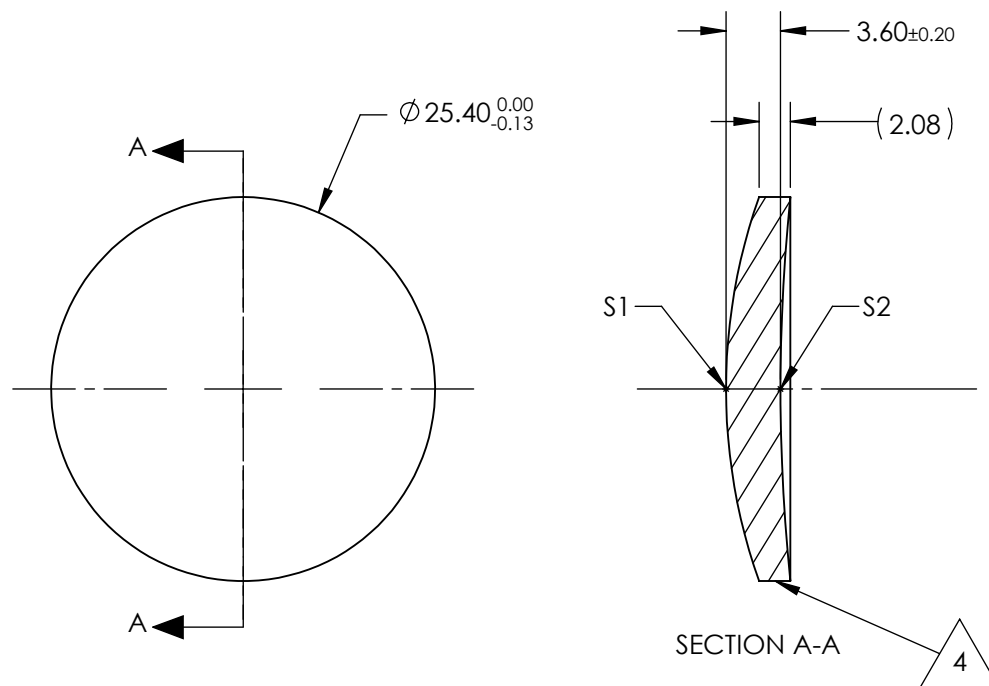


NOTES:

1. SUBSTRATE:  
Zinc Selenide (ZnSe), CVD Grade
2. CENTERING TOLERANCE:  
<3 ARCMIN
3. COATING (APPLY ACROSS CLEAR APERTURE)  
S1 & S2: NONE
4. FINE GRIND SURFACE
5. FOCAL LENGTH TOLERANCE:  $\pm 2\%$
6. ROHS COMPLIANT



**FOR INFORMATION ONLY:  
DO NOT MANUFACTURE  
PARTS TO THIS DRAWING**

|                        | S1                  | S2                  |
|------------------------|---------------------|---------------------|
| SHAPE                  | CONVEX              | CONCAVE             |
| RADIUS                 | 38.04               | 122.73              |
| IRREGULARITY AT 10.6µm | $\lambda/20$        | $\lambda/20$        |
| SURFACE QUALITY        | 60-40               | 60-40               |
| CLEAR APERTURE         | ø22.86              | ø22.86              |
| BEVEL                  | PROTECTED AS NEEDED | PROTECTED AS NEEDED |

|                           |       |
|---------------------------|-------|
| EFL @<br>10.6µm           | 38.1  |
| BFL @<br>10.6µm           | 36.23 |
| THIRD ANGLE<br>PROJECTION |       |
| ALL DIMS IN               | mm    |

SPECIFICATIONS SUBJECT TO CHANGE WITHOUT NOTICE  
DIMENSIONS ARE FOR REFERENCE ONLY

 **Edmund Optics®**

25.4mm Dia. x 38.1mm FL, Uncoated, ISP  
Optics Zinc Selenide (ZnSe) Meniscus Lens

TITLE

DWG NO

24912

SHEET  
1 OF 1