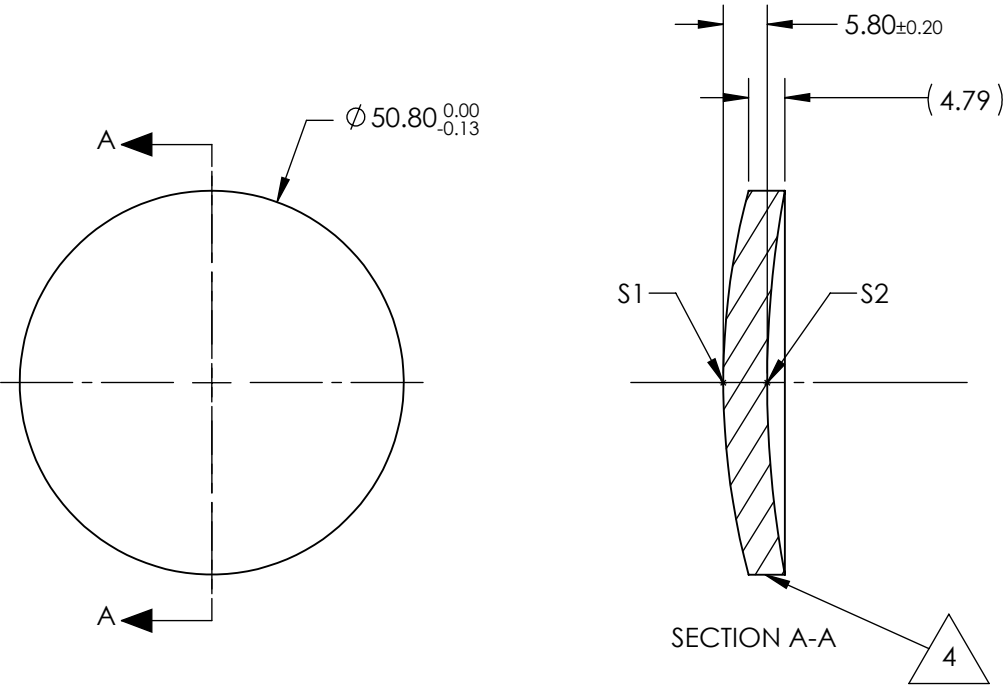


NOTES:

- 1. SUBSTRATE:
Germanium (Ge)
- 2. CENTERING TOLERANCE:
<3 ARCMIN
- 3. COATING (APPLY ACROSS CLEAR APERTURE)
S1 & S2: NONE
- 4. FINE GRIND SURFACE
- 5. FOCAL LENGTH TOLERANCE: ±2%
- 6. ROHS COMPLIANT



**FOR INFORMATION ONLY:
DO NOT MANUFACTURE
PARTS TO THIS DRAWING**

	S1	S2
SHAPE	CONVEX	CONCAVE
RADIUS	98.4	139.64
IRREGULARITY AT 10.6µm	λ/20	λ/20
SURFACE QUALITY	60-40	60-40
CLEAR APERTURE	ø45.72	ø45.72
BEVEL	PROTECTED AS NEEDED	PROTECTED AS NEEDED

EFL @ 10.6µm	100
BFL @ 10.6µm	95.9
THIRD ANGLE PROJECTION	
ALL DIMS IN	mm

SPECIFICATIONS SUBJECT TO CHANGE WITHOUT NOTICE
DIMENSIONS ARE FOR REFERENCE ONLY

 **Edmund Optics®**

50.8mm Dia. x 100mm FL, Uncoated, ISP
Optics Germanium (Ge) Meniscus Lens

TITLE

DWG NO

24840

SHEET
1 OF 1