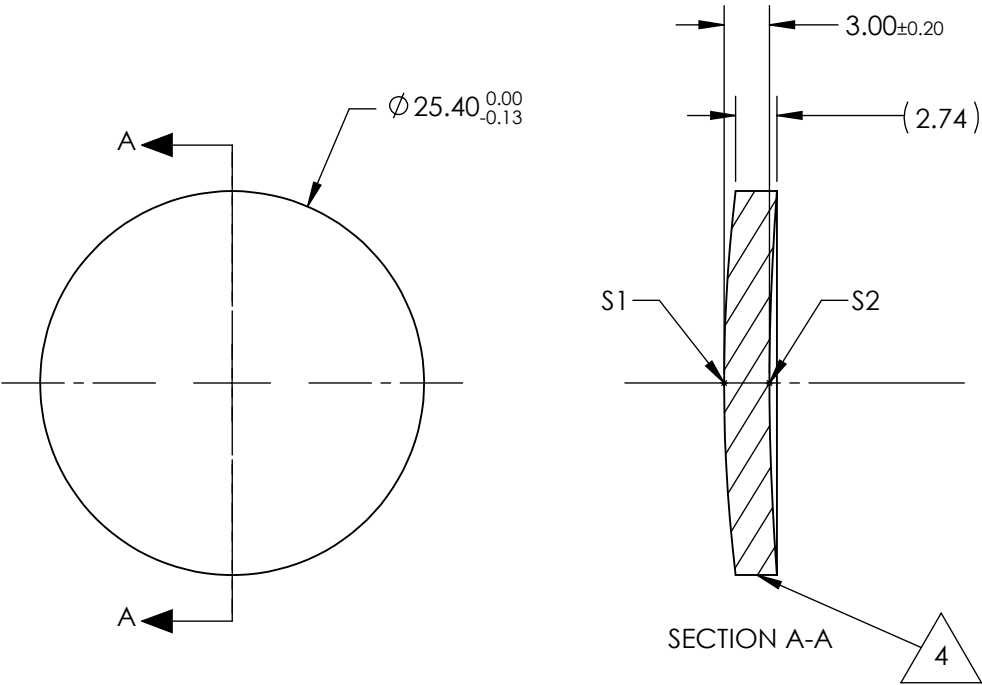


NOTES:

- 1. SUBSTRATE:  
Germanium (Ge)
- 2. CENTERING TOLERANCE:  
<3 ARCMIN
- 3. COATING (APPLY ACROSS CLEAR APERTURE)  
S1 & S2: NONE
- 4. FINE GRIND SURFACE
- 5. FOCAL LENGTH TOLERANCE: ±2%
- 6. ROHS COMPLIANT



**FOR INFORMATION ONLY:  
DO NOT MANUFACTURE  
PARTS TO THIS DRAWING**

	S1	S2
SHAPE	CONVEX	CONCAVE
RADIUS	106.15	161.06
IRREGULARITY AT 10.6µm	$\lambda/20$	$\lambda/20$
SURFACE QUALITY	60-40	60-40
CLEAR APERTURE	$\varnothing 22.86$	$\varnothing 22.86$
BEVEL	PROTECTED AS NEEDED	PROTECTED AS NEEDED

EFL @ 10.6µm	100
BFL @ 10.6µm	97.46
THIRD ANGLE PROJECTION	
ALL DIMS IN	mm

SPECIFICATIONS SUBJECT TO CHANGE WITHOUT NOTICE  
DIMENSIONS ARE FOR REFERENCE ONLY

**Edmund Optics®**

25.4mm Dia. x 100mm FL, Uncoated, ISP  
Optics Germanium (Ge) Meniscus Lens

DWG NO 24829

SHEET 1 OF 1