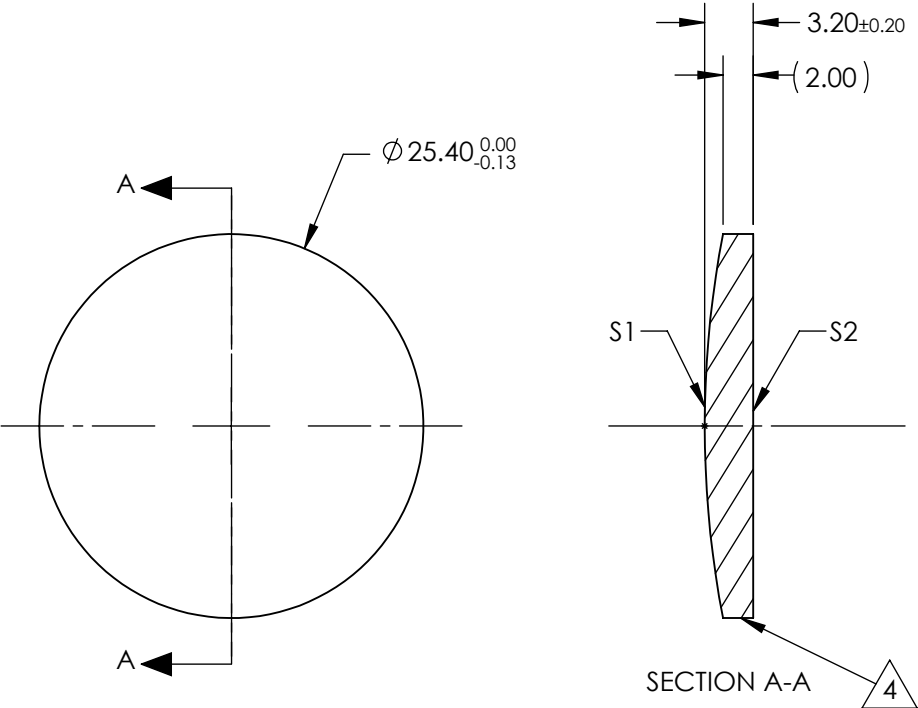


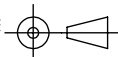
NOTES:

- 1. SUBSTRATE:  
Barium Fluoride (BaF2)
- 2. CENTERING TOLERANCE:  
<3 ARCMIN
- 3. COATING (APPLY ACROSS CLEAR APERTURE)  
S1 & S2: NONE
- 4. FINE GRIND SURFACE
- 5. FOCAL LENGTH TOLERANCE: ±2%
- 6. ROHS COMPLIANT



**FOR INFORMATION ONLY:  
DO NOT MANUFACTURE  
PARTS TO THIS DRAWING**

SPECIFICATIONS SUBJECT TO CHANGE WITHOUT NOTICE  
DIMENSIONS ARE FOR REFERENCE ONLY

	S1	S2	EFL @ 5µm	150.0	 <b>Edmund Optics®</b>		
SHAPE	CONVEX	PLANO	BFL @ 5µm	147.61			
RADIUS	67.57	INFINITY			TITLE	25.4mm Dia. x 150mm FL, Uncoated, ISP Optics Barium Fluoride (BaF2) PCX Lens	
IRREGULARITY AT 632.8nm	1λ	1λ					
SURFACE QUALITY	60-40	60-40			DWG NO	24749	
CLEAR APERTURE	ø22.86	ø22.86					
BEVEL	PROTECTED AS NEEDED	PROTECTED AS NEEDED	ALL DIMS IN	mm			SHEET 1 OF 1