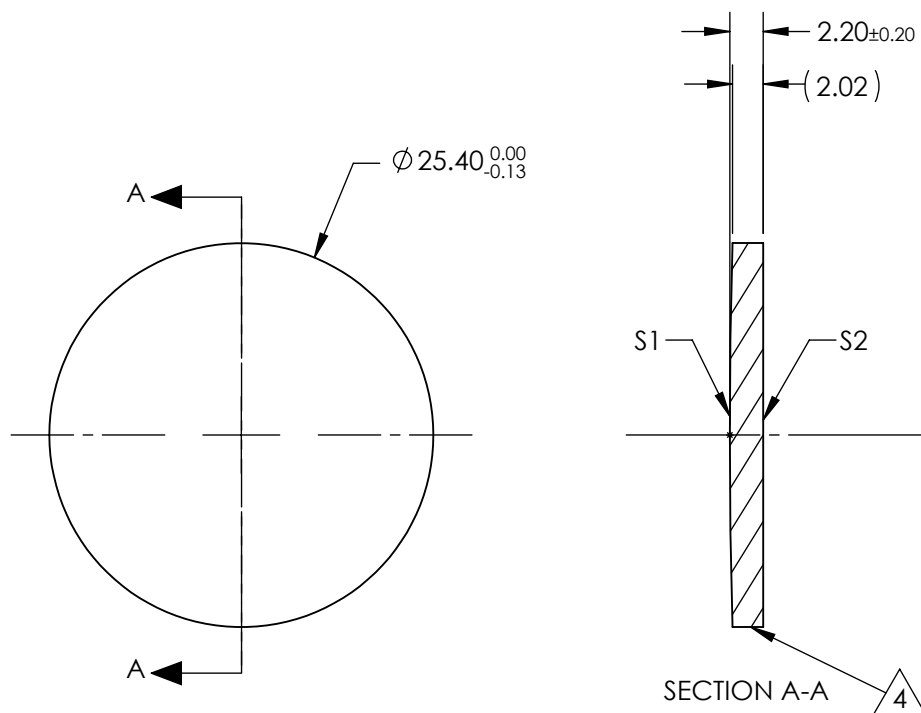



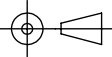
NOTES:

1. SUBSTRATE:  
Barium Fluoride (BaF<sub>2</sub>)
2. CENTERING TOLERANCE:  
<3 ARCMIN
3. COATING (APPLY ACROSS CLEAR APERTURE)  
S1 & S2: NONE
4. FINE GRIND SURFACE
5. FOCAL LENGTH TOLERANCE: ±2%
6. ROHS COMPLIANT



**FOR INFORMATION ONLY:  
DO NOT MANUFACTURE  
PARTS TO THIS DRAWING**

SPECIFICATIONS SUBJECT TO CHANGE WITHOUT NOTICE  
DIMENSIONS ARE FOR REFERENCE ONLY

	S1	S2	EFL @ 5µm	1000.0	 <b>Edmund Optics®</b>		
SHAPE	CONVEX	PLANO	BFL @ 5µm	995.1			
RADIUS	449.5	INFINITY	THIRD ANGLE PROJECTION 		TITLE 25.4mm Dia. x 1000mm FL, Uncoated, ISP Optics Barium Fluoride (BaF <sub>2</sub> ) PCX Lens		
IRREGULARITY AT 632.8nm	1λ	1λ					
SURFACE QUALITY	60-40	60-40	ALL DIMS IN mm		DWG NO 24753		
CLEAR APERTURE	ø22.86	ø22.86					
BEVEL	PROTECTED AS NEEDED	PROTECTED AS NEEDED			SHEET 1 OF 1		