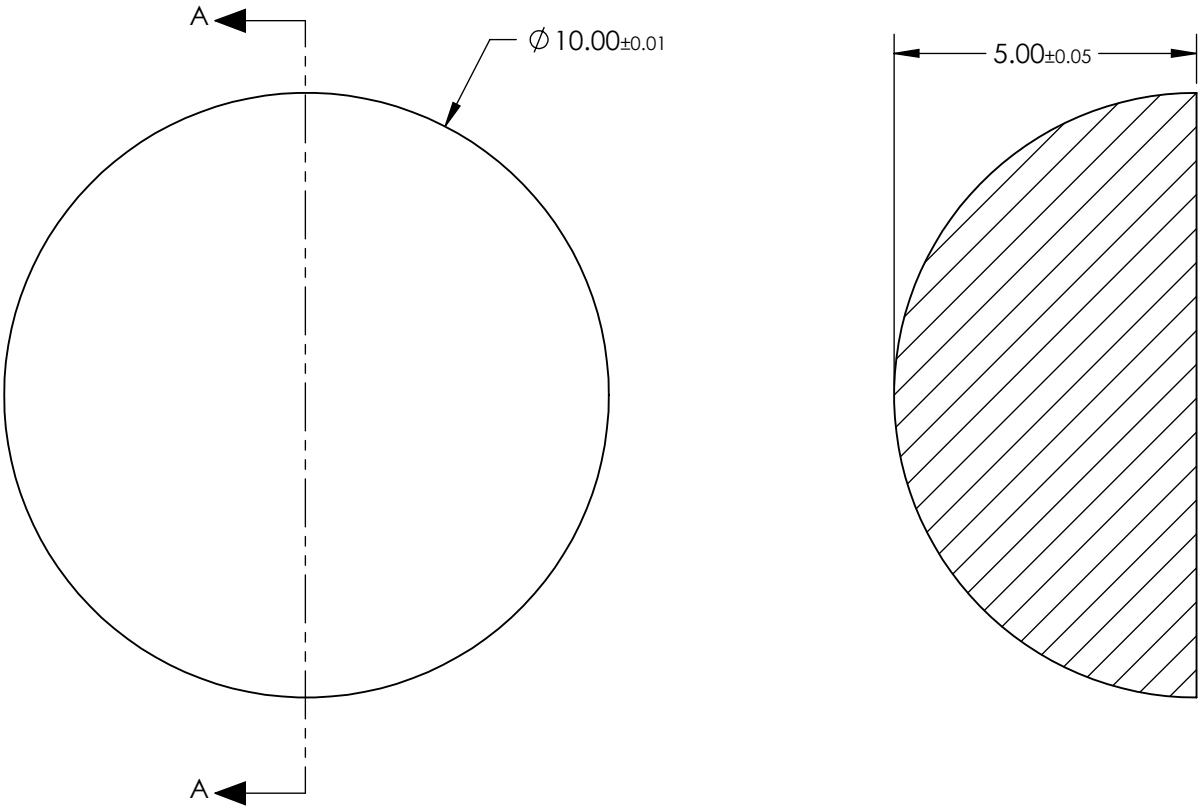




- NOTES:
- 1. SUBSTRATE:
Silicon (Si)
 - 2. COATING

NONE
 - 3. FINISH:
POLISHED
 - 4. ROHS COMPLIANT



**FOR INFORMATION ONLY:
DO NOT MANUFACTURE
PARTS TO THIS DRAWING**

SPECIFICATIONS SUBJECT TO CHANGE WITHOUT NOTICE
DIMENSIONS ARE FOR REFERENCE ONLY

		<div><div>®</div><div>Edmund Optics®</div></div>		
<div>THIRD ANGLE PROJECTION</div> <div></div>		<div>TITLE</div>	10mm Dia., 5mm Thick, Uncoated, ISP Optics Silicon (Si) Hyper Hemispherical Lens	
ALL DIMS IN	mm	DWG NO	24724	SHEET 12 OF 19