
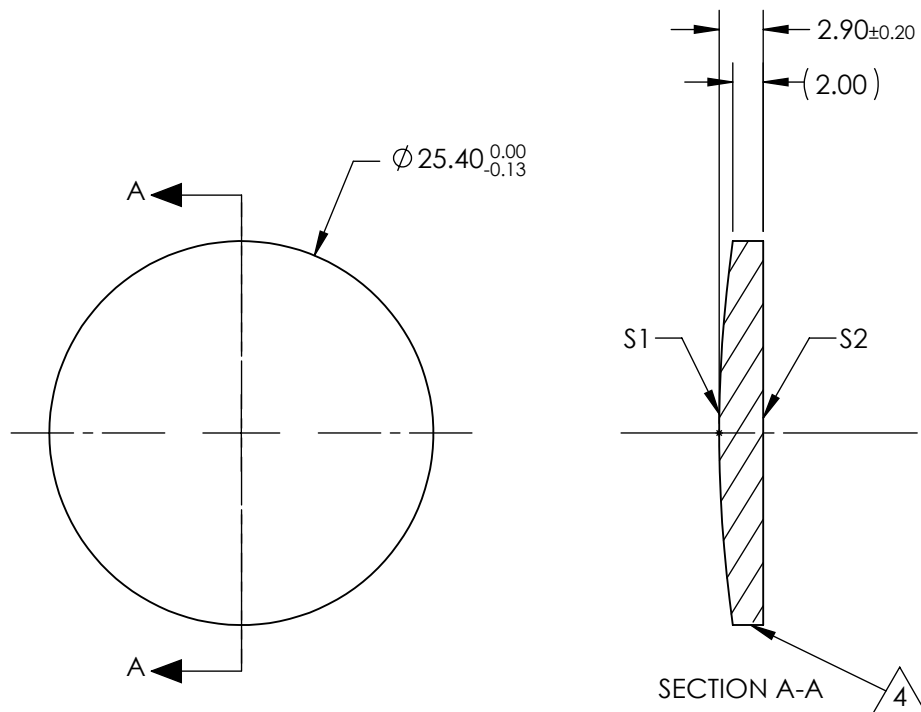



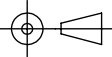
NOTES:

1. SUBSTRATE:
Barium Fluoride (BaF₂)
2. CENTERING TOLERANCE:
<3 ARCMIN
3. COATING (APPLY ACROSS CLEAR APERTURE)
S1 & S2: NONE
4.  FINE GRIND SURFACE
5. FOCAL LENGTH TOLERANCE: ±2%
6. ROHS COMPLIANT



**FOR INFORMATION ONLY:
DO NOT MANUFACTURE
PARTS TO THIS DRAWING**

SPECIFICATIONS SUBJECT TO CHANGE WITHOUT NOTICE
DIMENSIONS ARE FOR REFERENCE ONLY

| | | | | | | | |
|-------------------------|---------------------|---------------------|---|--------|---|--|-----------------|
| | S1 | S2 | EFL @ 5µm | 200.0 |  Edmund Optics® | | |
| SHAPE | CONVEX | PLANO | BFL @ 5µm | 197.99 | | | |
| RADIUS | 90.2 | INFINITY |  | | TITLE | 25.4mm Dia. x 200mm FL, Uncoated, ISP Optics Barium Fluoride (BaF ₂) PCX Lens | |
| IRREGULARITY AT 632.8nm | 1λ | 1λ | | | | | |
| SURFACE QUALITY | 60-40 | 60-40 | ALL DIMS IN | | DWG NO | 24750 | |
| CLEAR APERTURE | ø22.86 | ø22.86 | | | | | |
| BEVEL | PROTECTED AS NEEDED | PROTECTED AS NEEDED | mm | | | | SHEET 1 OF 1 |