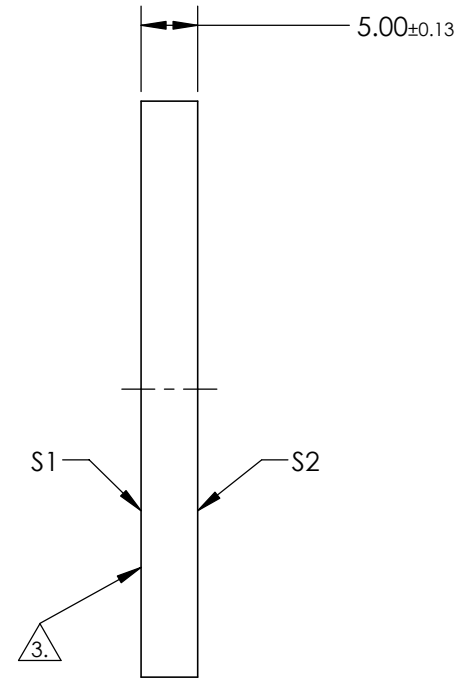
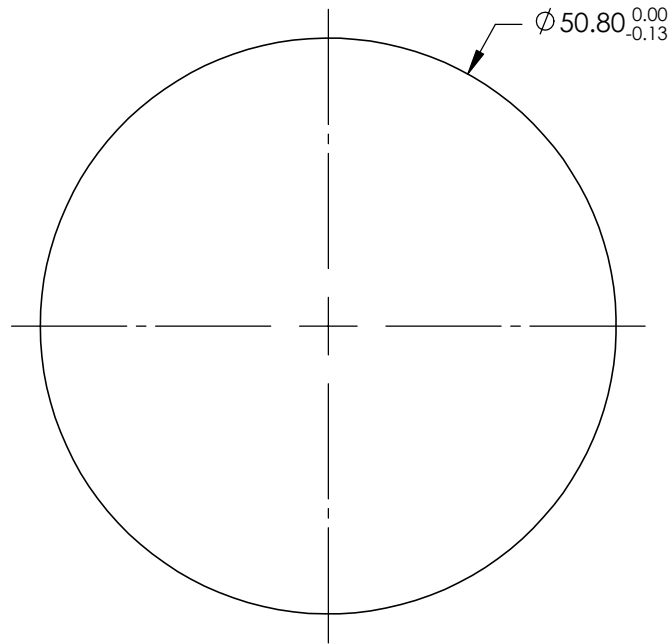


NOTES:

1. SUBSTRATE: Zinc Selenide (ZnSe)
2. COATING (APPLY ACROSS CLEAR APERTURE)
S1 & S2: NONE
3. FINE GRIND SURFACE TO ROUGHNESS(Ra) OF ~75µm



**FOR INFORMATION ONLY:
DO NOT MANUFACTURE
PARTS TO THIS DRAWING**

SPECIFICATIONS SUBJECT TO CHANGE WITHOUT NOTICE
DIMENSIONS ARE FOR REFERENCE ONLY

	S1	S2
SHAPE	PLANO	PLANO
SURFACE QUALITY	N/A	40-20
CLEAR APERTURE	N/A	Ø 43.18
BEVEL	PROTECTED AS NEEDED	PROTECTED AS NEEDED

THIRD ANGLE PROJECTION	
ALL DIMS IN	mm

EO® Edmund Optics®

TITLE	50.8mm Dia., 5mm Thick, ISP Optics ZnSe Infrared (IR) Diffuser		
DWG NO	24710	SHEET 1 OF 1	