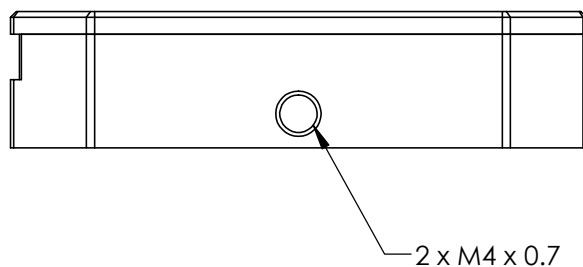
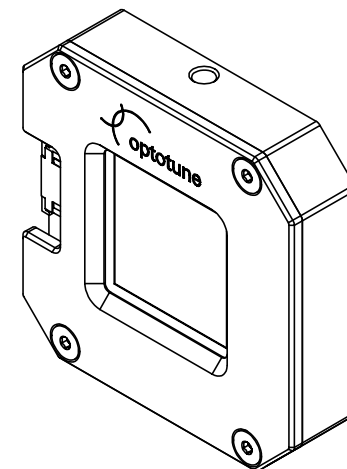
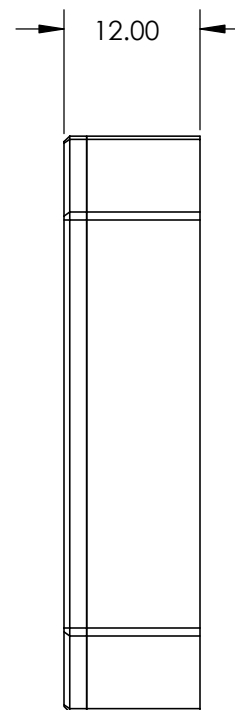
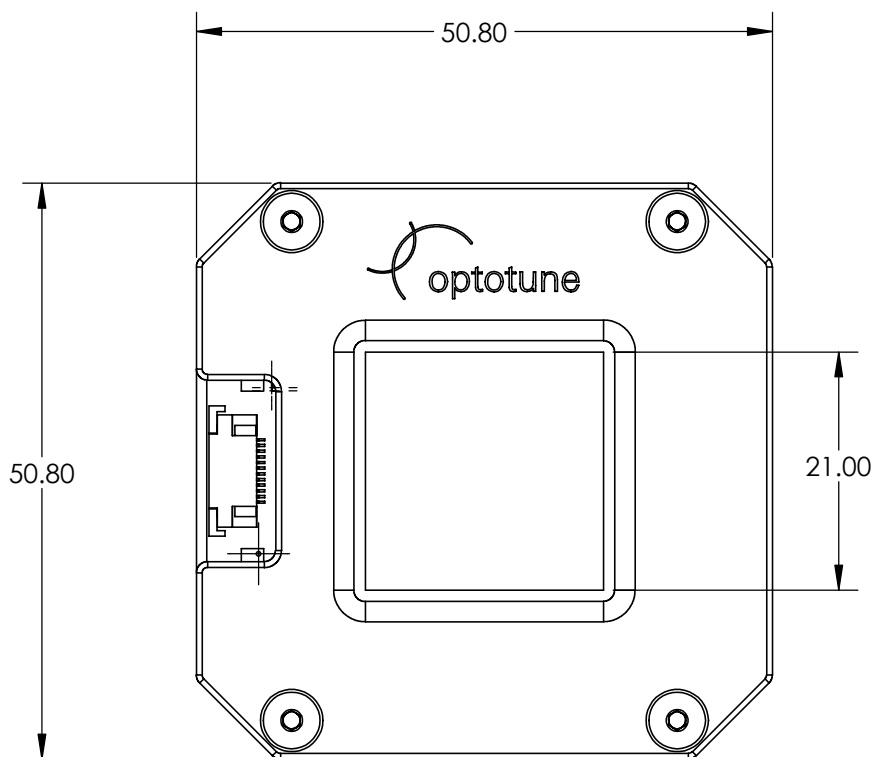


NOTES:

- COATING (APPLY ACROSS MIRROR APERTURE)
NIR DIELECTRIC COATING
 $R(\text{AVG}) > 98\% @ 750 - 1100\text{nm} (0-45^\circ)$



SPECIFICATIONS SUBJECT TO CHANGE WITHOUT NOTICE
DIMENSIONS ARE FOR REFERENCE ONLY

**FOR INFORMATION ONLY:
DO NOT MANUFACTURE
PARTS TO THIS DRAWING**

Edmund Optics®

| | | | | |
|------------------------|----|--------|---|--------------|
| THIRD ANGLE PROJECTION | | TITLE | NIR Dielectric Coated Optotune Fine Steering Mirror | |
| ALL DIMS IN | mm | DWG NO | 23716 | SHEET 1 OF 1 |