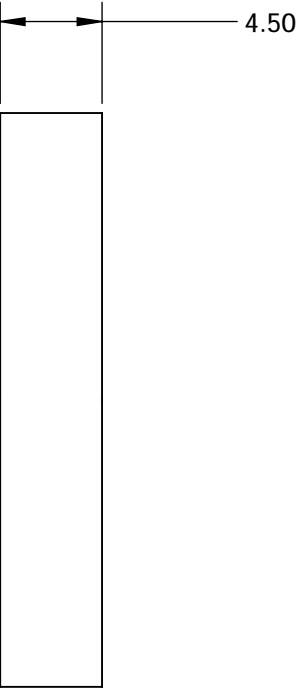
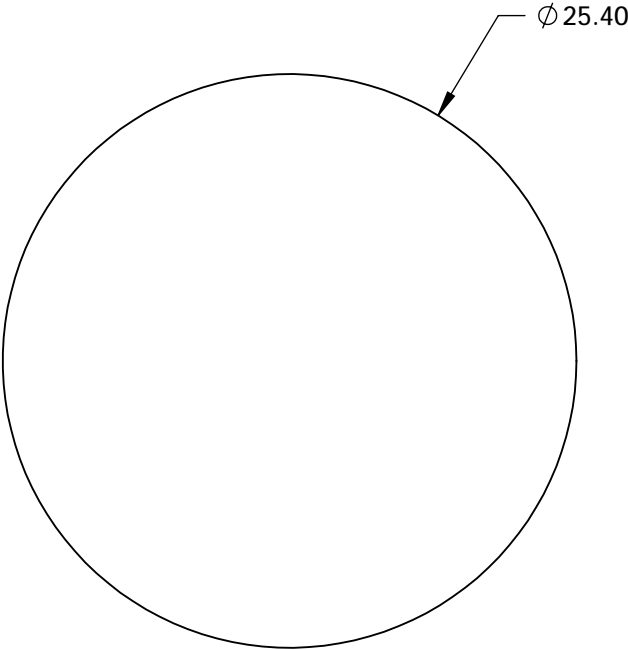
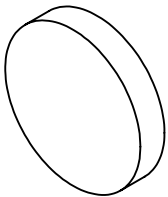


NOTES:

- 1. CONSTRUCTION: MOUNTED IN BLACK ANODIZED RING
- 2. COATING (APPLY ACROSS COATING APERTURE)

DURABILITY: MIL-C-48497A
PERFORMANCE SPECIFICATIONS:
CWL: 532
FWHM: 12 NOMINAL
TRANSMISSION %: 93% (400-500nm), 96% (600-750nm)


- 3. POWER, IRREGULARITY, AND SURFACE QUALITY SPECIFICATIONS
APPLY ACROSS CLEAR APERTURE
- 4. TRANSMITTED WAVEFRONT DISTORTION RMS@ $<1\lambda$
- 5. ROHS COMPLIANT



**FOR INFORMATION ONLY:
DO NOT MANUFACTURE
PARTS TO THIS DRAWING**

SPECIFICATIONS SUBJECT TO CHANGE WITHOUT NOTICE
DIMENSIONS ARE FOR REFERENCE ONLY



	S1	S2	<div>THIRD ANGLE PROJECTION</div> 		TITLE	532nm 25.4mm META® holoOPTIX® STRATA Notch Filter	
SHAPE	PLANO	PLANO					
SURFACE QUALITY	60-40	60-40	ALL DIMS IN	mm	DWG NO	23025	
CLEAR APERTURE	Ø 20.00	Ø 20.00					
					SHEET 2 OF 3		