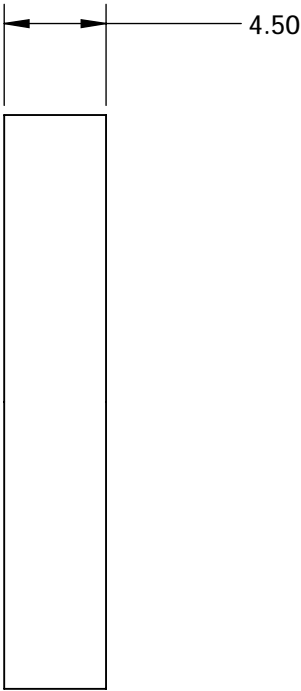
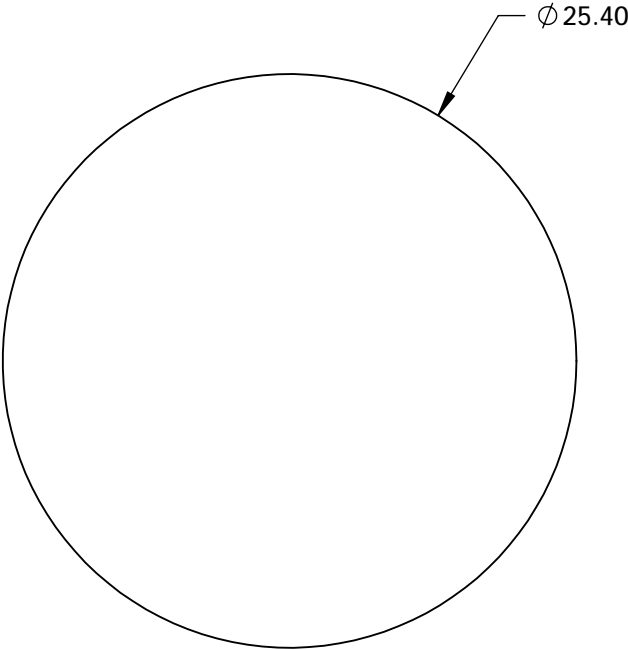
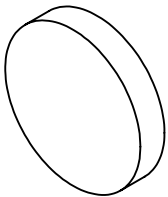


NOTES:

- 1. CONSTRUCTION: MOUNTED IN BLACK ANODIZED RING
- 2. COATING (APPLY ACROSS COATING APERTURE)

DURABILITY: MIL-C-48497A
PERFORMANCE SPECIFICATIONS:
CWL: 457
FWHM: 8 NOMINAL
TRANSMISSION %: 84% (400-435); 96% (500-750nm)

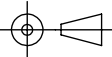
- 3. POWER, IRREGULARITY, AND SURFACE QUALITY SPECIFICATIONS
APPLY ACROSS CLEAR APERTURE
- 4. TRANSMITTED WAVEFRONT DISTORTION RMS@ $<1\lambda$
- 5. ROHS COMPLIANT



**FOR INFORMATION ONLY:
DO NOT MANUFACTURE
PARTS TO THIS DRAWING**

SPECIFICATIONS SUBJECT TO CHANGE WITHOUT NOTICE
DIMENSIONS ARE FOR REFERENCE ONLY

EO® **Edmund Optics®**

	S1	S2	THIRD ANGLE PROJECTION 		TITLE	457nm 25.4mm META® holoOPTIX® STRATA Notch Filter	
SHAPE	PLANO	PLANO					
SURFACE QUALITY	60-40	60-40					
CLEAR APERTURE	Ø 20.00	Ø 20.00	ALL DIMS IN	mm	DWG NO	23024	SHEET 1 OF 3