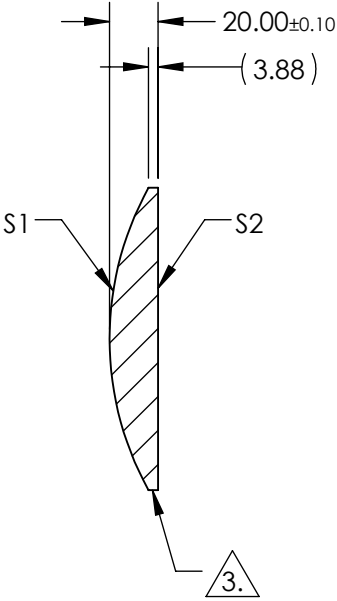
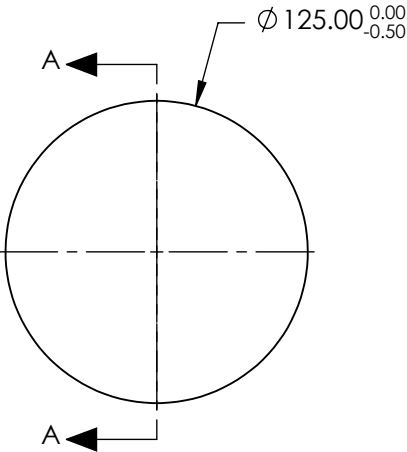


NOTES:

- 1. SUBSTRATE MATERIAL:
N-BK7
- 2. COATING (APPLY ACROSS CLEAR APERTURE)


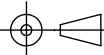
S1 & S2: MgF2 (400-700nm)
Ravg ≤1.75% @ 400 - 700nm
- 3. FINE GROUND EDGES
- 4. RoHS COMPLIANT



SECTION A-A

**FOR INFORMATION ONLY:
DO NOT MANUFACTURE
PARTS TO THIS DRAWING**

SPECIFICATIONS SUBJECT TO CHANGE WITHOUT NOTICE
DIMENSIONS ARE FOR REFERENCE ONLY

	S1	S2	EFL	250	 Edmund Optics®			
SHAPE	CONVEX	PLANO	BFL	237				
SURFACE QUALITY	120-80	120-80			TITLE	125mm Dia x 250mm Focal Length, MgF2 Coated, PCX Condenser Lens		
RADIUS	129	∞						
CLEAR APERTURE	Ø122.00	Ø122.00	ALL DIMS IN		mm	DWG NO	19908	SHEET 1 OF 1
BEVEL	PROTECTIVE AS NEEDED	PROTECTIVE AS NEEDED						