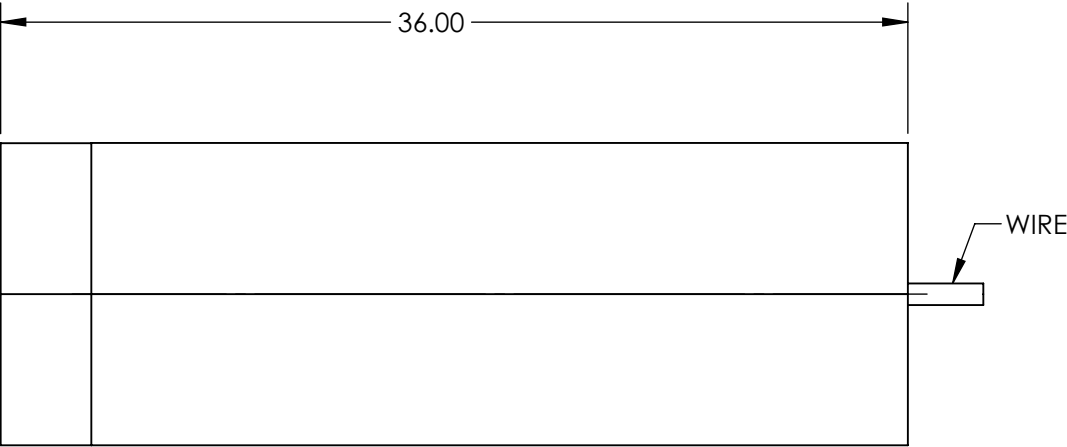
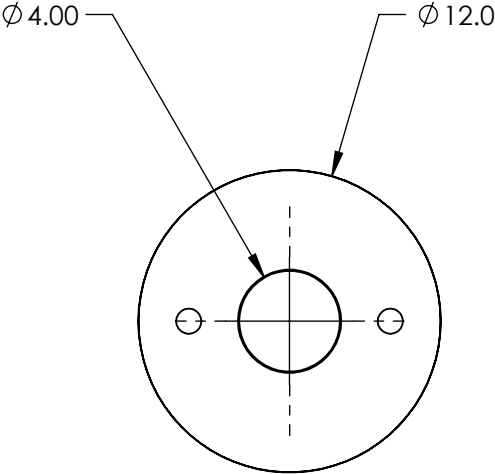
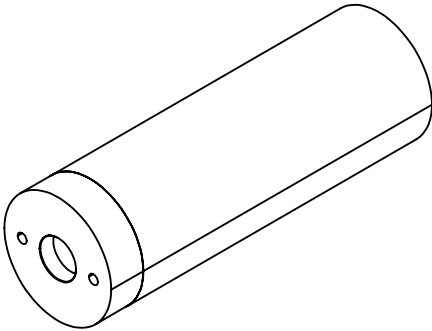



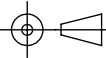
NOTES:

- 1. LASER CLASS:  
IIIb
- 2. BEAM DIAMETER(mm): 3.5 typical  
BEAM DIVERGENCE: <0.5mrad
- 3. MODULATION FREQUENCY: 0 - 10kHz
- 4. OPERATING TEMPERATURE: -10 to 50 °C  
OPERATING VOLTAGE: 5V
- 5. OUTPUT POWER: 25mW
- 6. WAVELENGTH RANGE: 405±5 nm



SPECIFICATIONS SUBJECT TO CHANGE WITHOUT NOTICE  
DIMENSIONS ARE FOR REFERENCE ONLY

**FOR INFORMATION ONLY:  
DO NOT MANUFACTURE  
PARTS TO THIS DRAWING**

 Edmund Optics®			
THIRD ANGLE PROJECTION 		TITLE	25mW, 405nm Violet Alignment Laser Diode Module
ALL DIMS IN	mm	DWG NO	19461
			SHEET 1 OF 1