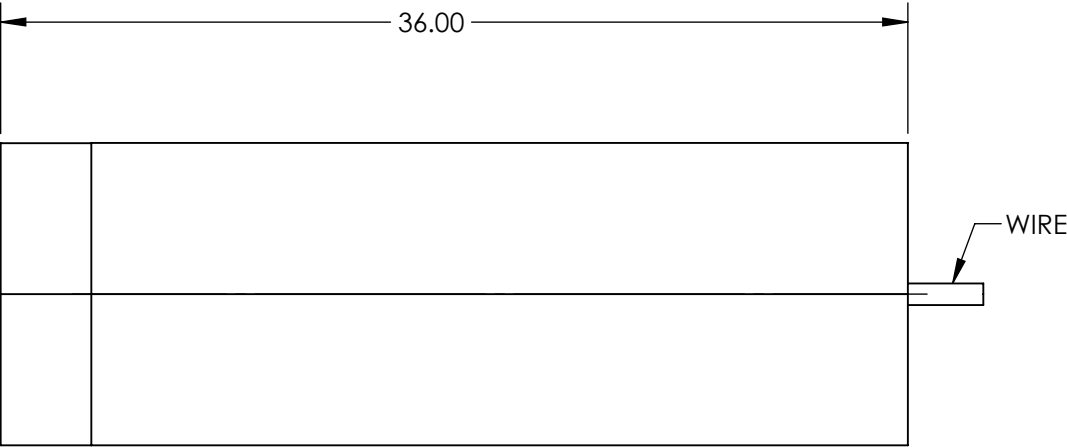
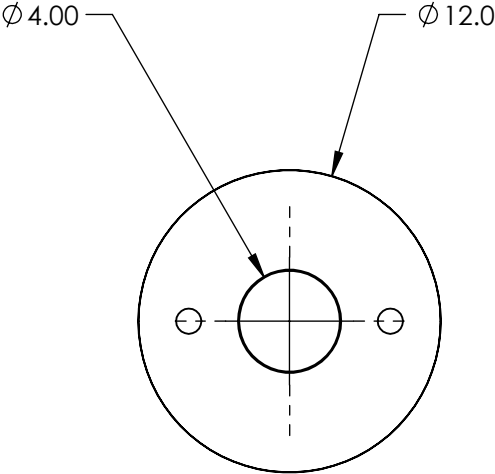
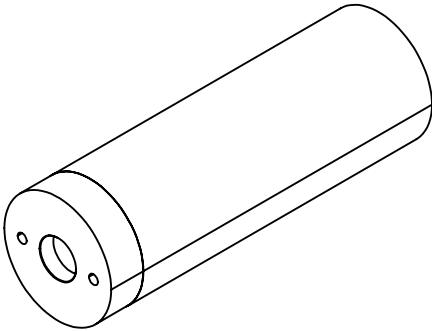


NOTES:

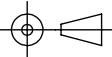
- 1. LASER CLASS:
IIIb
- 2. BEAM DIAMETER(mm): 2 x 4 typical
BEAM DIVERGENCE: <5.0mrad
- 3. MODULATION FREQUENCY: 0 - 10kHz
- 4. OPERATING TEMPERATURE: -10 to 50 °C
OPERATING VOLTAGE: 5V
- 5. OUTPUT POWER: 1mW
- 6. WAVELENGTH RANGE: 808±5 nm



SPECIFICATIONS SUBJECT TO CHANGE WITHOUT NOTICE
DIMENSIONS ARE FOR REFERENCE ONLY

**FOR INFORMATION ONLY:
DO NOT MANUFACTURE
PARTS TO THIS DRAWING**

EO[®] Edmund Optics[®]

THIRD ANGLE PROJECTION 		TITLE	1mW, 808nm Alignment Laser Diode	
ALL DIMS IN	mm	DWG NO	19449	SHEET 1 OF 1