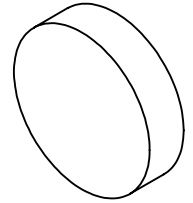


NOTES:

1. SUBSTRATE: FUSED SILICA
2. SURFACE S2 TO BE PARALLEL TO SURFACE S1 TO WITHIN 5.0 ARCMIN
3. COATING (APPLY ACROSS COATING APERTURE)
 S1: R(AVG)>99% @ 850-1150 nm @ 0° AOI
 Rs>99% @ 800-1150 nm @ 45° AOI
 Rp> 98.5 % @ ~850 – 1100 nm @ 45° AOI

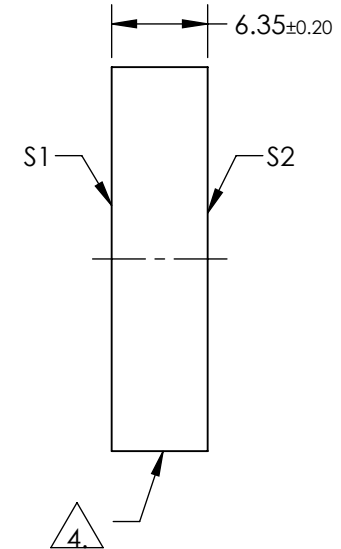
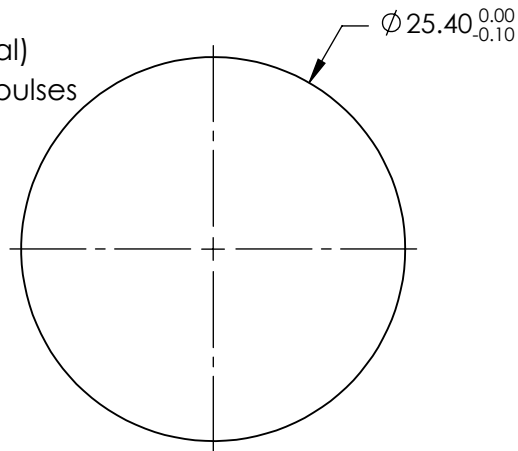
 GDD: 0 ±30fs² @ 800 - 1150nm

 S2: NONE



4. FINE GRIND SURFACE

5. Damage Threshold, Pulsed:
 0.4 J/cm² @ 1030nm, 200fs, 1 pulse (typical)
 0.18 J/cm² @ 1030nm, 200fs, 100Hz, 1000 pulses (typical)
6. RoHS: COMPLIANT



**FOR INFORMATION ONLY:
DO NOT MANUFACTURE
PARTS TO THIS DRAWING**

SPECIFICATIONS SUBJECT TO CHANGE WITHOUT NOTICE
DIMENSIONS ARE FOR REFERENCE ONLY

	S1	S2
SHAPE	PLANO	PLANO
SURFACE QUALITY	10-5	COMMERCIAL POLISH
SURFACE FLATNESS	$\lambda/10$	N/A
CLEAR APERTURE	Ø20.32	N/A
BEVEL	PROTECTIVE AS NEEDED	PROTECTIVE AS NEEDED



ALL DIMS IN

mm

EO® Edmund Optics®

TITLE

800-1150nm, 25.4mm Dia., Ultrafast-Enhanced Silver Laser Mirror

DWG NO

17265

SHEET
1 OF 1