

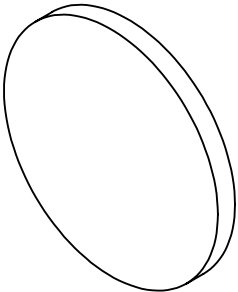
NOTES:

- 1. SUBSTRATE: BOROFLOAT33
- 2. COATING

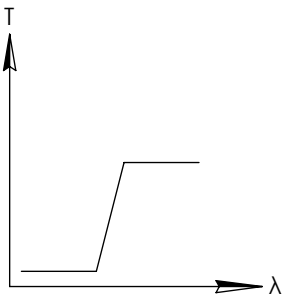
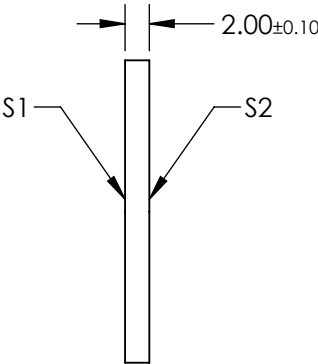
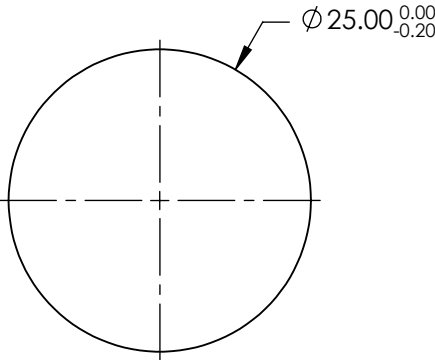
DURABILITY:  
PHYSICAL: MIL-C-48497A, SECTION 3.4.1  
ENVIRONMENTAL: MIL-STD-810F, SECTION 507.4

PERFORMANCE SPECIFICATIONS @ 0° AOI  
T(AVG): ≥85% FROM 840 - 1600nm  
T(AVG): ≤1% FROM 500 - 765nm  
CUT-ON WAVELENGTH: T(ABS) = 50% @ 800nm ± 16nm

**FOR INFORMATION ONLY:  
DO NOT MANUFACTURE  
PARTS TO THIS DRAWING**



- 3. ROHS COMPLIANT



LONGPASS FILTER

SPECIFICATIONS SUBJECT TO CHANGE WITHOUT NOTICE  
DIMENSIONS ARE FOR REFERENCE ONLY

	S1	S2
SHAPE	PLANO	PLANO
SURFACE QUALITY	60-40	60-40
CLEAR APERTURE	Ø22.5	Ø22.5
BEVEL	PROTECTIVE AS NEEDED	PROTECTIVE AS NEEDED



ALL DIMS IN mm



TITLE

FILTER OD2 LONGPASS 800nm 25mm

DWG NO

15230

SHEET  
1 OF 1