

**FOR INFORMATION ONLY:  
DO NOT MANUFACTURE  
PARTS TO THIS DRAWING**

NOTES:

1. SUBSTRATE: BOROFLOAT33
2. COATING

DURABILITY:

PHYSICAL: MIL-C-48497A, SECTION 3.4.1

ENVIRONMENTAL: MIL-STD-810F, SECTION 507.4

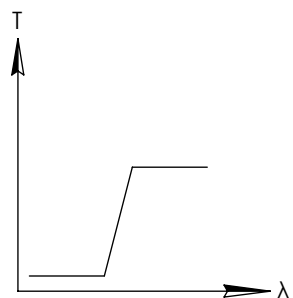
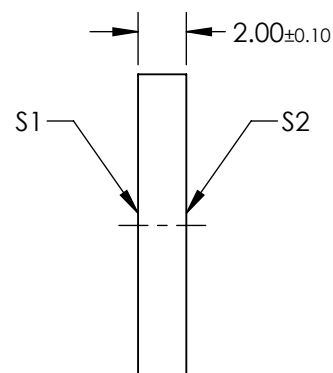
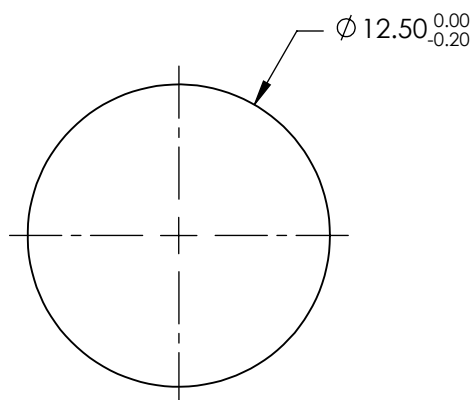
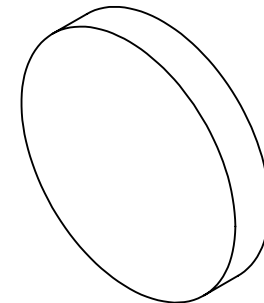
PERFORMANCE SPECIFICATIONS @ 0° AOI

T(AVG): ≥85% FROM 780 - 1600nm

T(AVG): ≤1% FROM 500 - 715nm

CUT-ON WAVELENGTH: T(ABS) = 50% @ 750nm ± 15nm

3. ROHS COMPLIANT

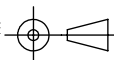


LONGPASS FILTER

SPECIFICATIONS SUBJECT TO CHANGE WITHOUT NOTICE  
DIMENSIONS ARE FOR REFERENCE ONLY

	S1	S2
SHAPE	PLANO	PLANO
SURFACE QUALITY	60-40	60-40
CLEAR APERTURE	Ø11.25	Ø11.25
BEVEL	PROTECTIVE AS NEEDED	PROTECTIVE AS NEEDED

THIRD ANGLE  
PROJECTION



ALL DIMS IN

mm

**EO**® **Edmund Optics**®

TITLE

FILTER OD2 LONGPASS 750nm 12.5mm

DWG NO

15217

SHEET  
1 OF 1