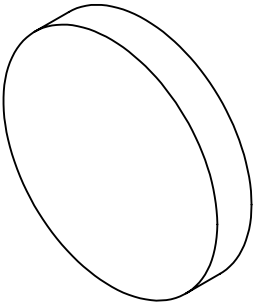


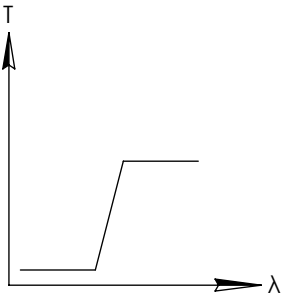
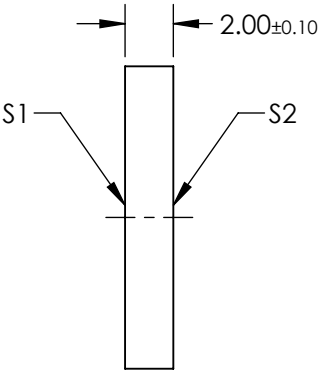
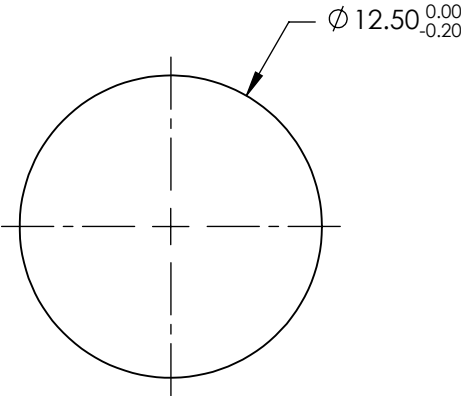
**FOR INFORMATION ONLY:
DO NOT MANUFACTURE
PARTS TO THIS DRAWING**



- NOTES:
- 1. SUBSTRATE: BOROFLOAT33
 - 2. COATING
- DURABILITY:
PHYSICAL: MIL-C-48497A, SECTION 3.4.1
ENVIRONMENTAL: MIL-STD-810F, SECTION 507.4

PERFORMANCE SPECIFICATIONS @ 0° AOI
T(AVG): ≥85% FROM 525 - 1600nm
T(AVG): ≤1% FROM 200 - 475nm
CUT-ON WAVELENGTH: T(ABS) = 50% @ 500nm ± 10nm

- 3. ROHS COMPLIANT



LONGPASS FILTER

SPECIFICATIONS SUBJECT TO CHANGE WITHOUT NOTICE
DIMENSIONS ARE FOR REFERENCE ONLY

	S1	S2
SHAPE	PLANO	PLANO
SURFACE QUALITY	60-40	60-40
CLEAR APERTURE	Ø11.25	Ø11.25
BEVEL	PROTECTIVE AS NEEDED	PROTECTIVE AS NEEDED



ALL DIMS IN mm

Edmund Optics®

TITLE

FILTER OD2 LONGPASS 500nm 12.5mm

DWG NO

15212

SHEET
1 OF 1