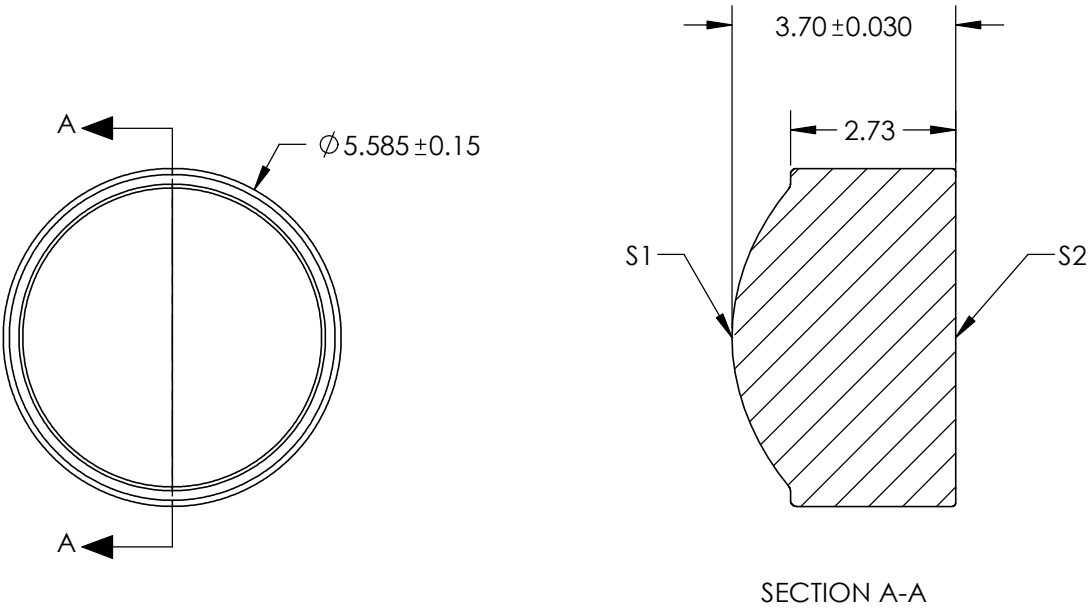



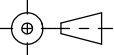
NOTES:

- 1. SUBSTRATE:
D-ZLAF52LA
- 2. NUMERICAL APERTURE: 0.55
- 3. COATING
S1 & S2: R(AVG) ≤0.5% @ 350 - 700nm
- 4. FOCAL LENGTH TOLERANCE: ±1%
- 5. TRANSMITTED WAVEFRONT ERROR (λ, RMS @ 632.8NM): <0.200
- 6. DESIGN WAVELENGTH: 447nm



**FOR INFORMATION ONLY:
DO NOT MANUFACTURE
PARTS TO THIS DRAWING**

SPECIFICATIONS SUBJECT TO CHANGE WITHOUT NOTICE
DIMENSIONS ARE FOR REFERENCE ONLY

	S1	S2	EFL	4.13	 Edmund Optics®		
			WD	2.20			
SHAPE	CONVEX	PLANO			TITLE	LightPath 355625 5.585mm Dia., 0.55 NA, BBAR (350-700nm), Molded Aspheric Lens	
SURFACE QUALITY	40-20	40-20					
CLEAR APERTURE	Ø 4.60	Ø 4.60	ALL DIMS IN	mm	DWG NO	16699	SHEET 1 OF 1
BEVEL	PROTECTED AS NEEDED	PROTECTED AS NEEDED					