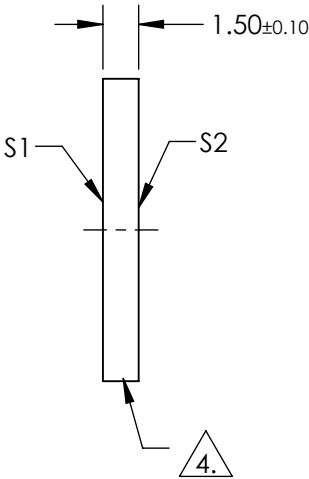
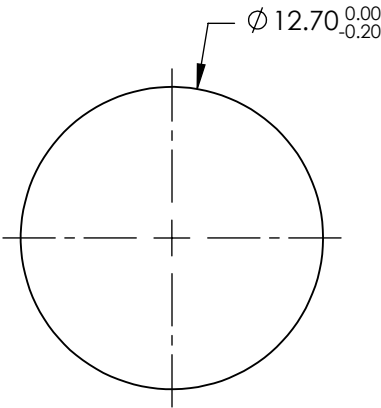

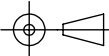


- NOTES:
- 1. SUBSTRATE:  
FUSED SILICA
  - 2. SURFACE S2 TO BE PARALLEL TO SURFACE S1 TO WITHIN < 5 ARCSEC
  - 3. COATING (APPLY ACROSS COATING APERTURE):  
S1 & S2: R(AVG) <0.5% @ 350 - 700nm
  - 4. FINE GRIND
  - 5. ROHS COMPLIANT



**FOR INFORMATION ONLY:  
DO NOT MANUFACTURE  
PARTS TO THIS DRAWING**

SPECIFICATIONS SUBJECT TO CHANGE WITHOUT NOTICE  
DIMENSIONS ARE FOR REFERENCE ONLY

	S1	S2			 Edmund Optics®		
SHAPE	PLANO	PLANO		TITLE		12.7mm DIA., 1.5mm THICK, VIS-EXT COATED, λ/10 FUSED SILICA WINDOW	
SURFACE QUALITY	20-10	20-10		DWG NO		15781	
CLEAR APERTURE	Ø10.16	Ø10.16				SHEET 1 OF 1	
BEVEL	PROTECTIVE AS NEEDED	PROTECTIVE AS NEEDED	ALL DIMS IN	mm			