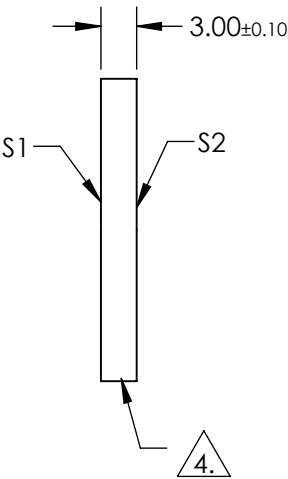
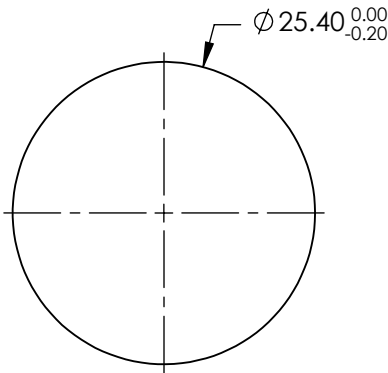



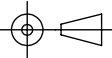
- NOTES:
- 1. SUBSTRATE:
FUSED SILICA
 - 2. SURFACE S2 TO BE PARALLEL TO SURFACE S1 TO WITHIN < 5 ARCSEC
 - 3. COATING (APPLY ACROSS COATING APERTURE):
S1 & S2: R(ABS) ≤ 0.25% AT 880nm
R(AVG) ≤ 1.25% FROM 400-870nm
R(AVG) ≤ 1.25% FROM 890-1000nm

- 4. FINE GRIND
- 5. ROHS COMPLIANT



**FOR INFORMATION ONLY:
DO NOT MANUFACTURE
PARTS TO THIS DRAWING**

SPECIFICATIONS SUBJECT TO CHANGE WITHOUT NOTICE
DIMENSIONS ARE FOR REFERENCE ONLY

			 Edmund Optics®			
SHAPE	S1 PLANO	S2 PLANO		TITLE	25.4mm Dia., 3mm Thick, VIS-NIR λ/10 Fused Silica Window	
SURFACE QUALITY	20-10	20-10				
CLEAR APERTURE	Ø22.86	Ø22.86				
BEVEL	PROTECTIVE AS NEEDED	PROTECTIVE AS NEEDED		DWG NO	15415	SHEET 1 OF 1
			ALL DIMS IN	mm		