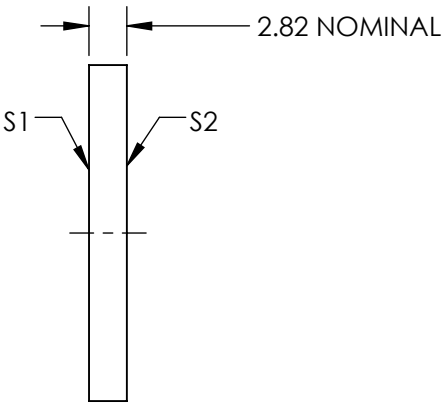
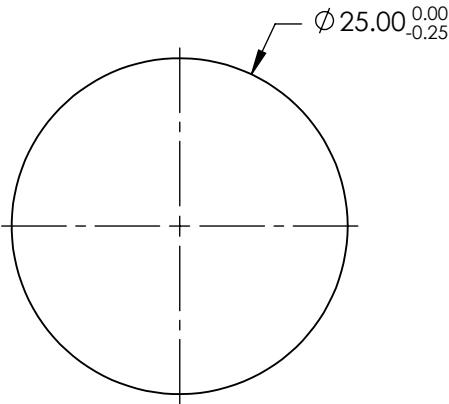
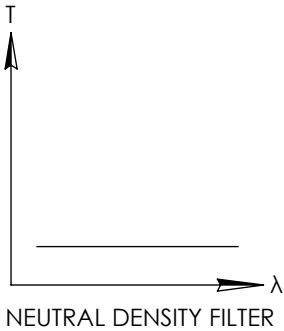


NOTES:


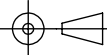
1. SUBSTRATE:
SCHOTT NG9
2. SURFACE S2 TO BE PARALLEL WITH SURFACE S1 TO WITHIN <30 ARCSEC
3. COATING(APPLY ACROSS CLEAR APERTURE)
S1 & S2: R(AVG) $\leq 1.0\%$ @ 450 - 700nm @ 0°
4. OD: 4 $\pm 10\%$ @ 550nm
5. POWER, IRREGULARITY, AND SURFACE QUALITY SPECIFICATIONS APPLY ACROSS CLEAR APERTURE
6. TRANSMITTED WAVEFRONT DISTORTION P-V @ 632.8: $\lambda/4$
7. ROHS COMPLIANT

**FOR INFORMATION ONLY:
DO NOT MANUFACTURE
PARTS TO THIS DRAWING**



SPECIFICATIONS SUBJECT TO CHANGE WITHOUT NOTICE
DIMENSIONS ARE FOR REFERENCE ONLY

	S1	S2
SHAPE	PLANO	PLANO
SURFACE QUALITY	80-50	80-50
CLEAR APERTURE	Ø22.50	Ø22.50
BEVEL	PROTECTIVE AS NEEDED	PROTECTIVE AS NEEDED

 Edmund Optics®			
THIRD ANGLE PROJECTION 		TITLE	4.0 OD, 25mm Dia., Precision Anti-Reflection Coated Absorptive Neutral Density Filter
ALL DIMS IN	mm	DWG NO	16075
			SHEET 1 OF 1