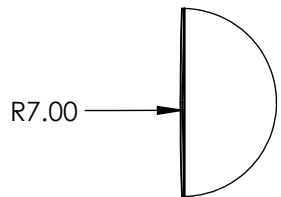
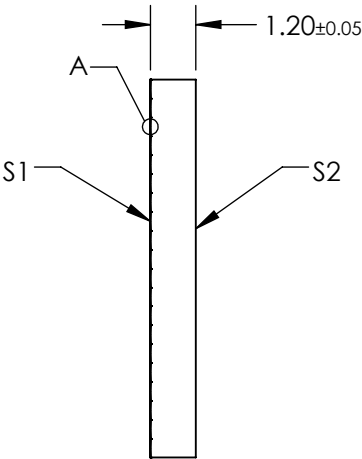
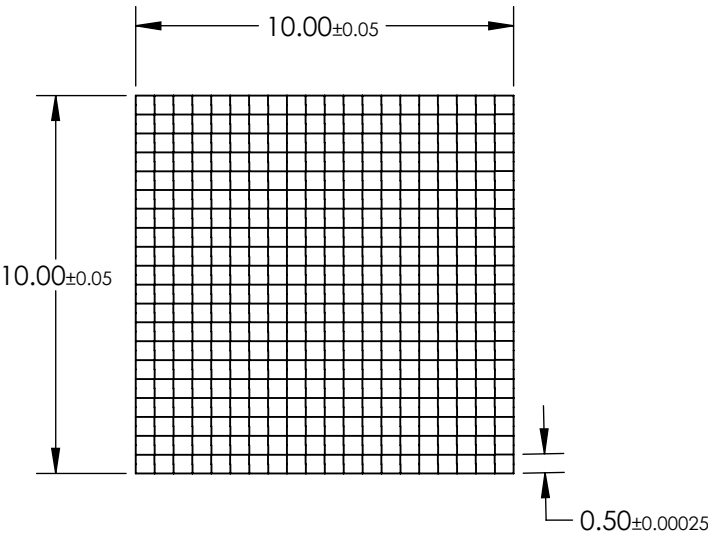


NOTES:

- 1. SUBSTRATE:  
Fused Silica
- 2. COATING (APPLY ACROSS COATING APERTURE):  
S1 & S2: NONE
- 3. EFFECTIVE FOCAL LENGTH: 15.3mm
- 4. DIVERGENCE ANGLE:  $\pm 1^\circ$
- 5. WAVELENGTH RANGE (nm): 400 - 1000
- 6. ROHS: COMPLIANT


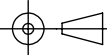


DETAIL A



SPECIFICATIONS SUBJECT TO CHANGE WITHOUT NOTICE  
DIMENSIONS ARE FOR REFERENCE ONLY

**FOR INFORMATION ONLY:  
DO NOT MANUFACTURE  
PARTS TO THIS DRAWING**

|  |    |        |   |
|--|----|--------|---|
|  Edmund Optics®         |    |        |   |
| THIRD ANGLE PROJECTION  |    | TITLE  | MicroLens Array 10 x 10mm, 500µm Pitch, 1° Divergence, VIS-NIR Coated |
| ALL DIMS IN  | mm | DWG NO | 15814   |
|  |    |        | SHEET 1 OF 1  |