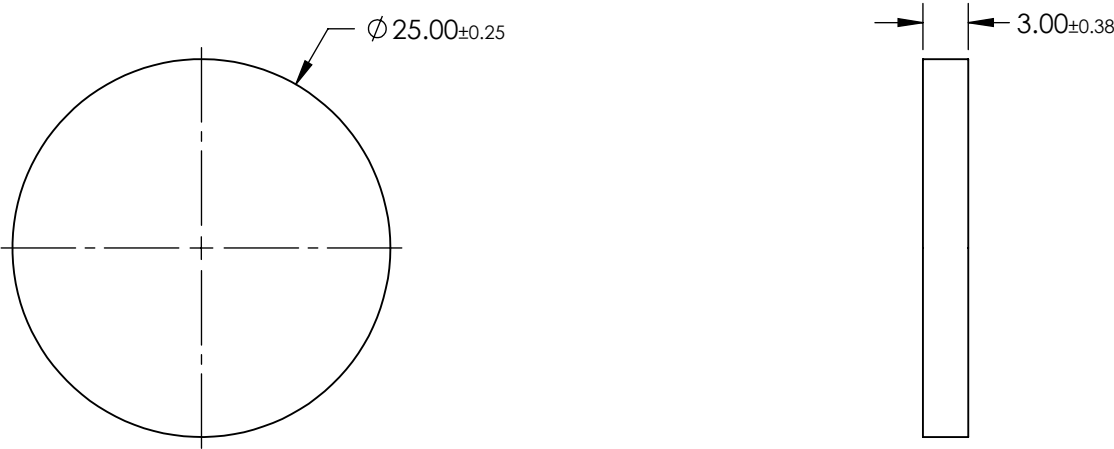


**FOR INFORMATION ONLY:
DO NOT MANUFACTURE
PARTS TO THIS DRAWING**


NOTES:

1. SUBSTRATE: ISUZU ISK370
DENSITY: 2.56g/cm³
REFLECTION FACTOR: 0.92
KNOOP HARDNESS: 482kg/mm²
REFRACTIVE INDEX: 1.509nm
2. SURFACE S2 TO BE PARALLEL TO SURFACE S1 TO WITHIN 3 ARCMIN



SPECIFICATIONS SUBJECT TO CHANGE WITHOUT NOTICE
DIMENSIONS ARE FOR REFERENCE ONLY

	S1
SHAPE	PLANO
FUNCTION	HEAT ABSORBING
SURFACE QUALITY	60-40
CLEAR APERTURE	Ø22.50
BEVEL MAX FACE	PROTECTIVE AS NEEDED

THIRD ANGLE PROJECTION		 Edmund Optics®		
ALL DIMS IN		TITLE	ISUZU ISK370, 25 Dia., HEAT ABSORBING COLORED GLASS FILTER	
mm		DWG NO	15708	SHEET 1 OF 1