

NOTES:

- SUBSTRATE:  
LIBA 2000+
- CENTERING TOLERANCE (AT 587.6nm): BEAM DEVIATION (HALF ANGLE): <25 ARCMIN
- COATING (APPLY ACROSS COATING APERTURE)  
S1 & S2: ¼ WAVE MgF2 @ 550nm  
R(AVG) < 1.75% FROM 400-700nm (N-BK7)

4. EDGE: AS MOLDED

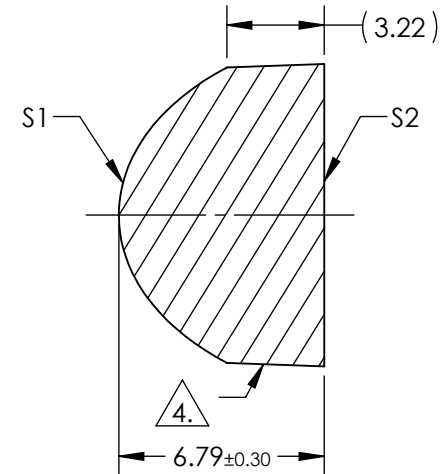
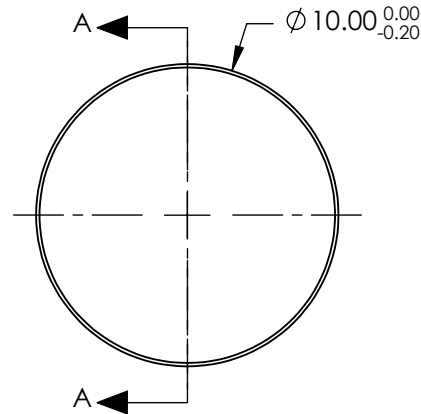
5. ASPHERIC SURFACE DESCRIBED BY THE FOLLOWING EQUATION AND COEFFICIENTS SHOWN IN TABLE BELOW

$$Z(Y) = \frac{\left(\frac{1}{\text{RADIUS}}\right) * Y^2}{1 + \sqrt{1 - (1+k) * \left(\frac{1}{\text{RADIUS}}\right)^2 * Y^2}} + D * Y^2 + E * Y^4 + F * Y^6 + G * Y^8 + H * Y^{10} + J * Y^{12} + L * Y^{14} + M * Y^{16}$$

6. RoHS: COMPLIANT



**FOR INFORMATION ONLY:  
DO NOT MANUFACTURE  
PARTS TO THIS DRAWING**

COEFFICIENT TABLE 5.	
	S1
Semi-diameter	5.0
Coefficient	
(1/RADIUS)	2.398082E-01
k	-6.570601E-01
D	0.000000E+00
E	2.500548E-04
F	5.665679E-06
G	1.109842E-07
H	0.000000E+00
J	0.000000E+00
L	0.000000E+00
M	0.000000E+00



SECTION A-A

SPECIFICATIONS SUBJECT TO CHANGE WITHOUT NOTICE  
DIMENSIONS ARE FOR REFERENCE ONLY

REV. A	S1	S2	EFL: 8.00		 Edmund Optics®		
SHAPE	CONVEX	PLANO	BFL: 3.20				
RADIUS	4.170	∞			TITLE	LENS CONDENSER 10mm X 8mm MgF2 TS	
SURFACE QUALITY	As Molded	As Molded			DWG NO	15190	
CLEAR APERTURE	Ø8.78	Ø8.78	ALL DIMS IN	mm			
BEVEL	PROTECTIVE AS NEEDED	PROTECTIVE AS NEEDED					