

NOTES:

1. SUBSTRATE MATERIAL:
FUSED SILICA
2. COATING (APPLY ACROSS CLEAR APERTURE)

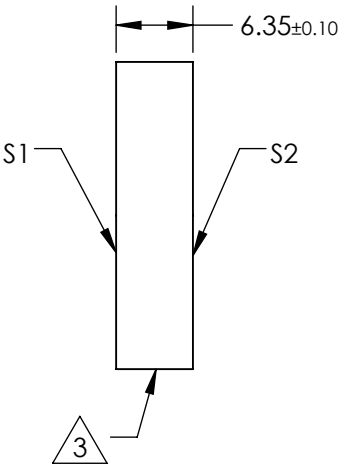
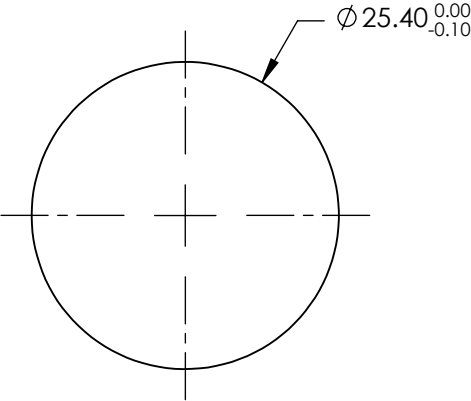
S1: Ultrafast Laser
R(AVG) >99.8% @ 1660 - 3330nm (S-POL)
R(AVG) > 99.5% @ 1750 - 3050nm (P-POL)

GDD SPECIFICATION:
±20fs2 @ 1750 - 2800nm
±80fs2 @ 1750 - 3050nm (S-POL)
±50fs2 @ 1800 - 2700nm (P-POL)

S2: NONE

3. FINE GROUND SURFACE


4. RoHS COMPLIANT



SPECIFICATIONS SUBJECT TO CHANGE WITHOUT NOTICE
DIMENSIONS ARE FOR REFERENCE ONLY

REV. A	S1	S2
SHAPE	PLANO	PLANO
CLEAR APERTURE (%)	Ø20.32	N/A
SURFACE QUALITY	40-20	COMMERCIAL POLISH
SURFACE FLATNESS	λ/2	N/A
BEVEL	PROTECTIVE AS NEEDED	PROTECTIVE AS NEEDED

THIRD ANGLE PROJECTION	
ALL DIMS IN	mm

 Edmund Optics®			
TITLE		1750 - 3050nm, 25.4mm Dia. x 6.35mm Thickness, Ultrafast Broadband Laser Mirror	
DWG NO		15474	SHEET 1 OF 1