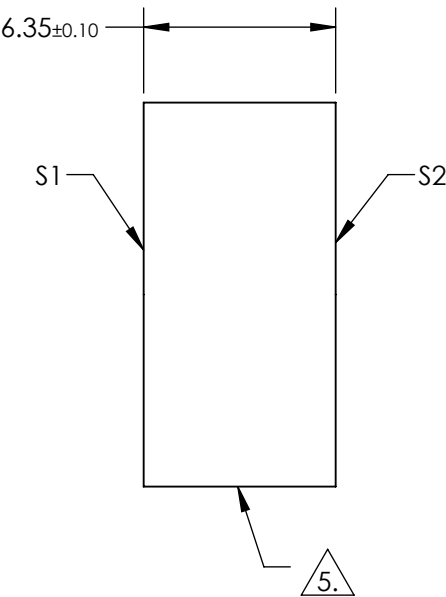
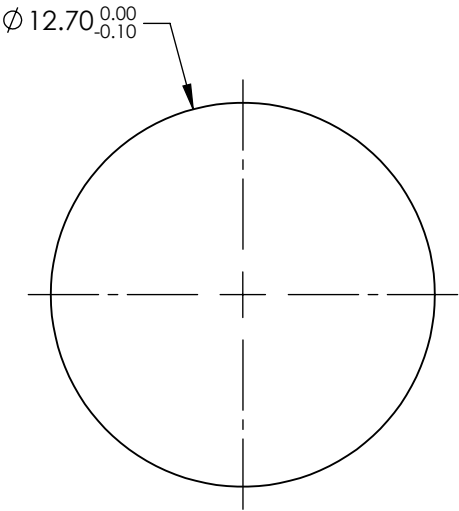


NOTES:


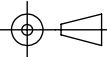
- 1. SUBSTRATE: FUSED SILICA (CORNING 7980)
- 2. RoHS: COMPLIANT
- 3. SURFACE S2 TO BE PARALLEL TO SURFACE S1 TO WITHIN < 10 ARCSEC
- 4. COATING (APPLY ACROSS COATING APERTURE)
S1: R(AVG) = 80 ± 2% @ 532nm @ 0° AOI
S2: AR(AVG) < 0.2% @ 532nm @ 0° AOI

5. FINE GRIND SURFACE



**FOR INFORMATION ONLY:
DO NOT MANUFACTURE
PARTS TO THIS DRAWING**

SPECIFICATIONS SUBJECT TO CHANGE WITHOUT NOTICE
DIMENSIONS ARE FOR REFERENCE ONLY

	S1	S2	 Edmund Optics®			
SHAPE	PLANO	PLANO				
SURFACE ACCURACY AT 632.8nm (P-V)	$\lambda/8$	N/A				
SURFACE QUALITY	10-5	10-5				
CLEAR APERTURE	$\varnothing 10.16$	N/A				
BEVEL	PROTECTIVE AS NEEDED	PROTECTIVE AS NEEDED				
			ALL DIMS IN	mm	TITLE	$\varnothing 12.7\text{mm}$, 80%R, 532nm OUTPUT COUPLER
			DWG NO			14742
						SHEET 1 OF 1