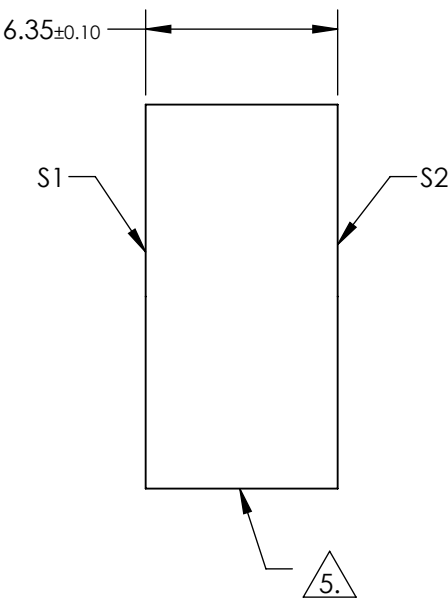
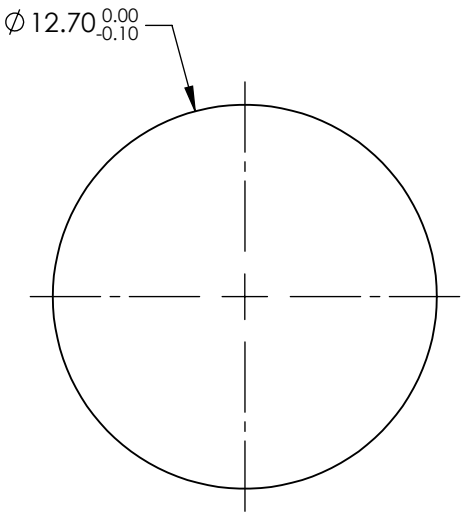


NOTES:

- 1. SUBSTRATE: FUSED SILICA (CORNING 7980)
- 2. RoHS: COMPLIANT
- 3. SURFACE S2 TO BE PARALLEL TO SURFACE S1 TO WITHIN < 10 ARCSEC
- 4. COATING (APPLY ACROSS COATING APERTURE)
S1: R(AVG) = 80 ± 2% @ 1064nm @ 0° AOI
S2: AR(AVG) < 0.2% @ 1064nm @ 0° AOI


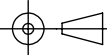
5. FINE GRIND SURFACE



**FOR INFORMATION ONLY:
DO NOT MANUFACTURE
PARTS TO THIS DRAWING**

SPECIFICATIONS SUBJECT TO CHANGE WITHOUT NOTICE
DIMENSIONS ARE FOR REFERENCE ONLY

	S1	S2
SHAPE	PLANO	PLANO
SURFACE ACCURACY AT 632.8nm (P-V)	$\lambda/8$	N/A
SURFACE QUALITY	10-5	10-5
CLEAR APERTURE	$\varnothing 10.16$	N/A
BEVEL	PROTECTIVE AS NEEDED	PROTECTIVE AS NEEDED

 Edmund Optics®			
THIRD ANGLE PROJECTION 		TITLE	$\varnothing 12.7\text{mm}$, 80%T, 1064nm OUTPUT COUPLER
ALL DIMS IN	mm	DWG NO	14740
			SHEET 1 OF 1