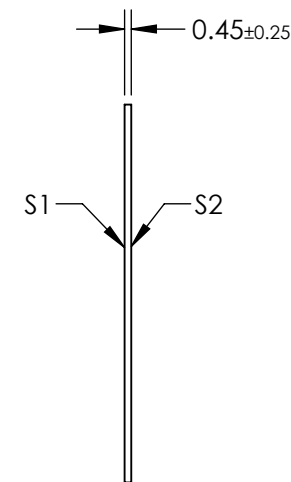
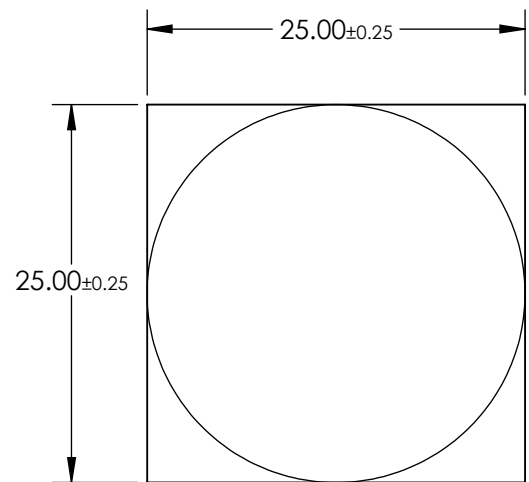

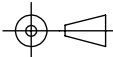


- NOTES:
- 1. SUBSTRATE: D263
  - 2. COATING (APPLY ACROSS CLEAR APERTURE):  
 $R(ABS) < 0.5\% @ 450 - 650nm$
  - 3. RoHS: COMPLIANT



**FOR INFORMATION ONLY:  
DO NOT MANUFACTURE  
PARTS TO THIS DRAWING**

SPECIFICATIONS SUBJECT TO CHANGE WITHOUT NOTICE  
DIMENSIONS ARE FOR REFERENCE ONLY

			EFL: 40mm		 Edmund Optics®		
			BFL: N/A				
SHAPE	S1 PLANO	S2 PLANO			TITLE	40mm FOCAL LENGTH POLARIZATION DIRECTED FLAT LENS	
SURFACE QUALITY	60 - 40	60 - 40					
MIN CLEAR APERTURE	Ø24.50	Ø24.50					
BEVEL MAX FACE	PROTECTIVE AS NEEDED	PROTECTIVE AS NEEDED	ALL DIMS IN	mm	DWG NO	14779	SHEET 1 OF 1