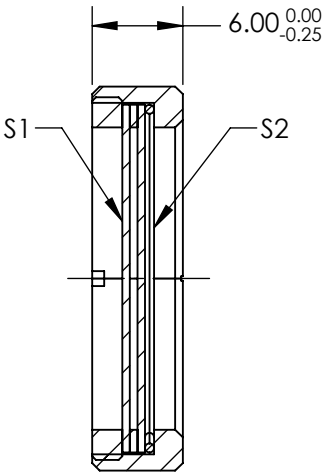
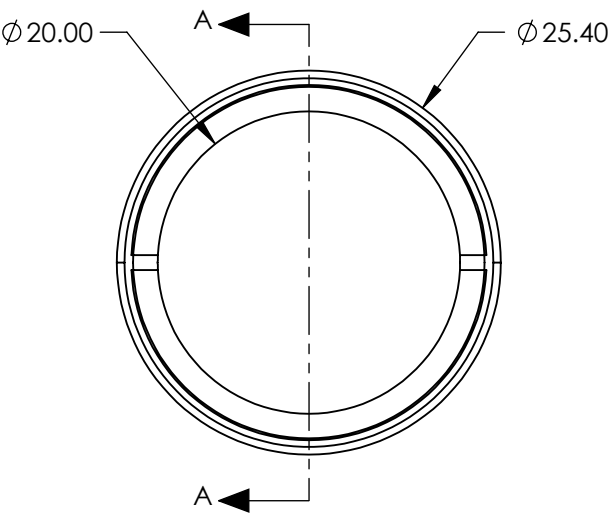


NOTES:

- 1. SUBSTRATE: CRYSTAL QUARTZ
- 2. SURFACE S2 TO BE PARALLEL TO SURFACE S1 TO WITHIN < 3 ARCMIN
- 3. COATING (APPLY ACROSS COATING APERTURE)
S1 & S2: R(ABS) < 0.2% @ 1064nm
- 4. RETARDANCE: $\lambda/2 \pm \lambda/300$
- 5. TRANSMITTED WAVEFRONT: $\lambda/10$ FOR CENTRAL 80% OF CLEAR APERTURE
- 6. RoHS: COMPLIANT

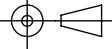


SECTION A-A

**FOR INFORMATION ONLY:
DO NOT MANUFACTURE
PARTS TO THIS DRAWING**

SPECIFICATIONS SUBJECT TO CHANGE WITHOUT NOTICE
DIMENSIONS ARE FOR REFERENCE ONLY

Edmund Optics®

	S1	S2	THIRD ANGLE PROJECTION 		TITLE	25.4mm DIA. 1064nm $\lambda/2$ QUARTZ WAVEPLATE ZERO ORDER	
CLEAR APERTURE	Ø20.00	Ø20.00	ALL DIMS IN	mm	DWG NO	14288	SHEET 1 OF 1
SURFACE QUALITY	10-5	10-5					