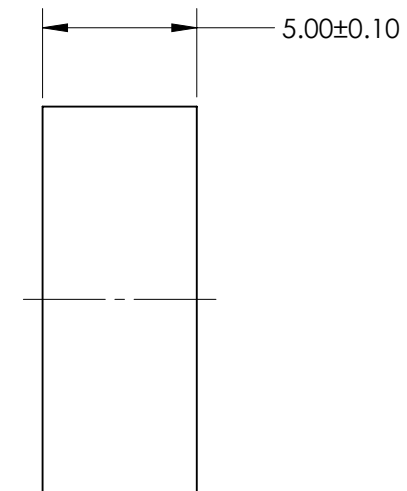
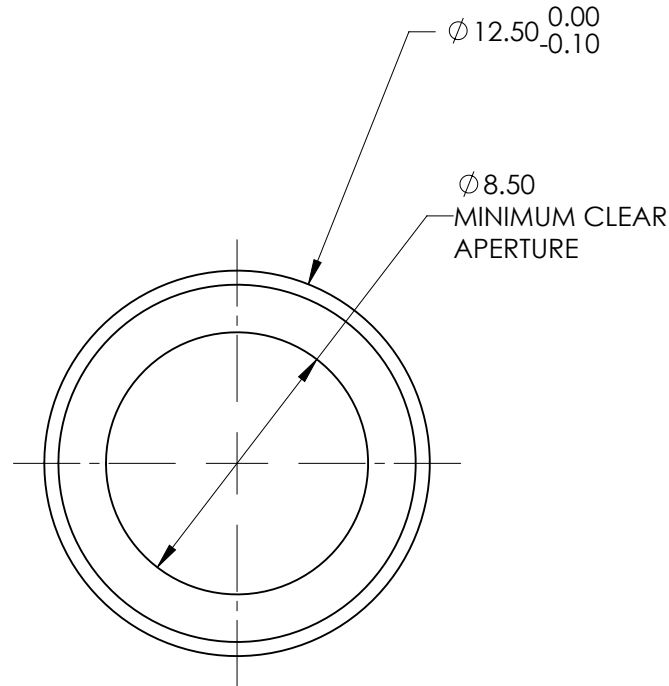
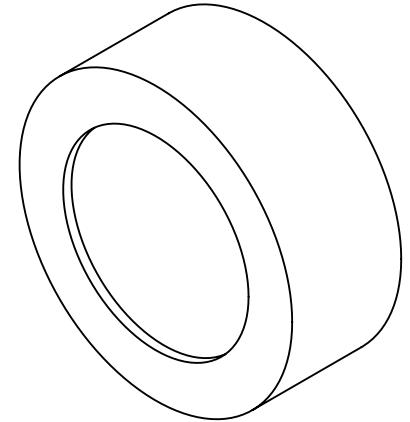
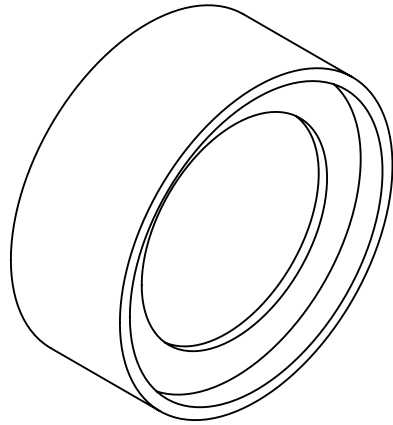



***FOR INFORMATION ONLY:
DO NOT MANUFACTURE
PARTS TO THIS DRAWING***

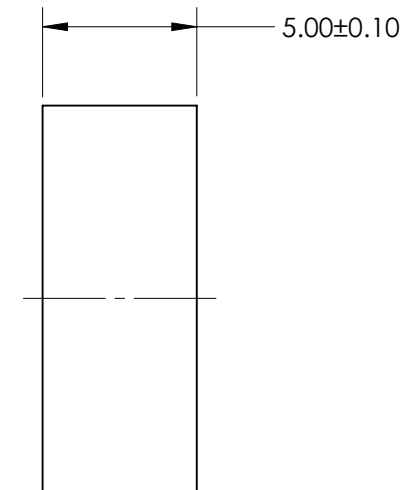
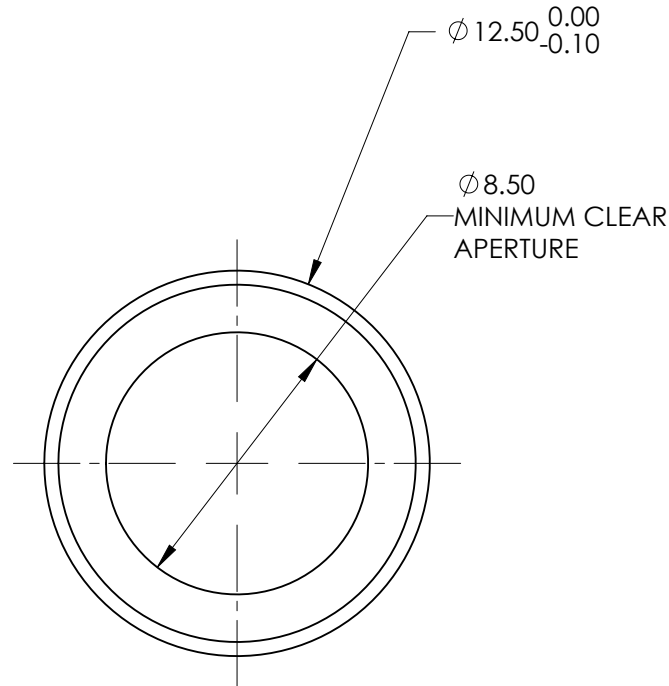
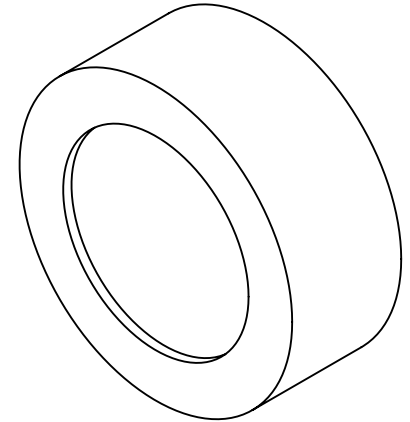
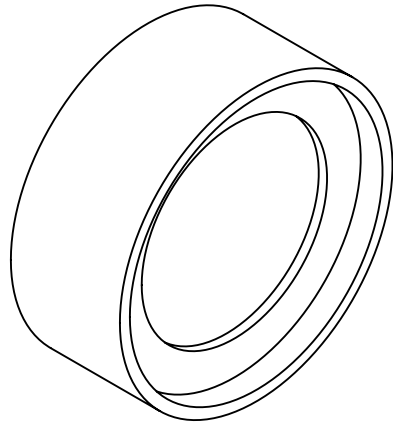


| SPECIFICATION | VALUE |
|----------------------------|---|
| CENTER WAVELENGTH (CWL) | 1150nm \pm 5nm |
| FULL WIDTH HALF MAX (FWHM) | 50nm \pm 5nm |
| MINIMUM TRANSMISSION | >90% |
| BLOCKING | OD > 4.0 FROM 200 TO 1500nm |
| SURFACE QUALITY | 80 - 50 |
| CONSTRUCTION | MOUNTED IN BLACK ANODIZED ALUMINUM RING |
| COATING TYPE | HARD COATED |
| DURABILITY | MIL-C-48497A, SECT. 3.4.1 |
| ENVIRONMENTAL | MIL-STD-810F, SECT. 507.4 |

SPECIFICATIONS SUBJECT TO CHANGE WITHOUT NOTICE
DIMENSIONS ARE FOR REFERENCE ONLY


| | | | | |
|---------------------|----|---|--|-----------------|
| EFL (AT 587.6nm) | NA |  Edmund Optics® | | |
| BFL (AT 587.6nm) | NA | TITLE | 1150nm CWL, 12.5mm Dia. Hard Coated OD4 50nm Bandpass Filter | |
| ALL DIMS IN | mm | DWG NO | 85883 | SHEET 1 OF 1 |

***FOR INFORMATION ONLY:
DO NOT MANUFACTURE
PARTS TO THIS DRAWING***

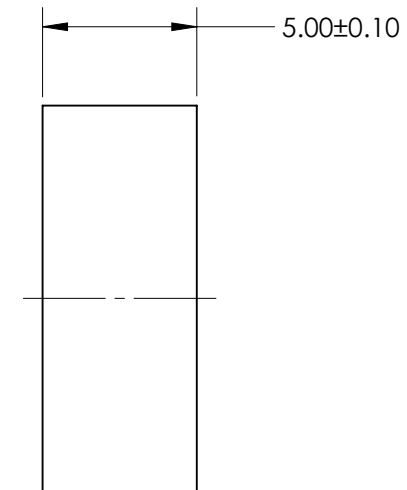
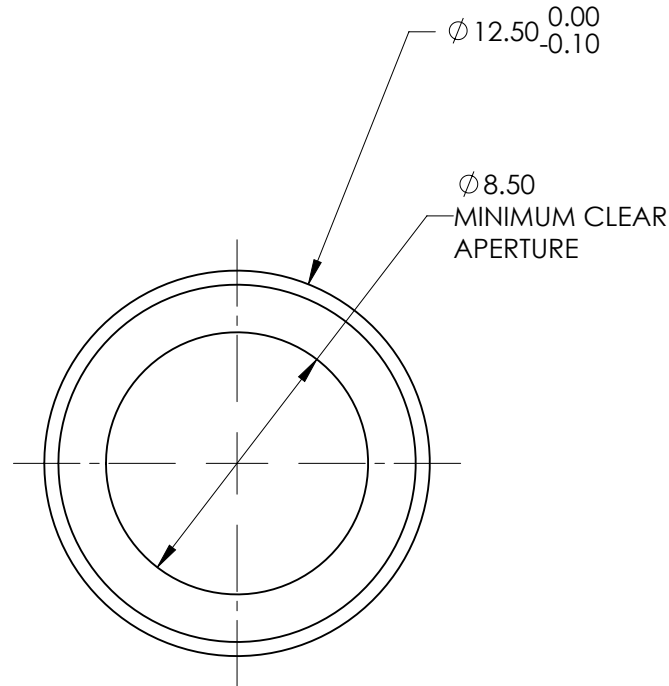
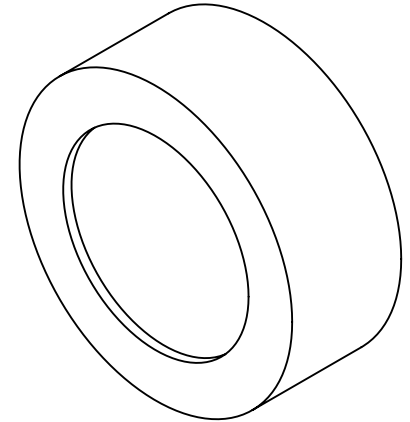
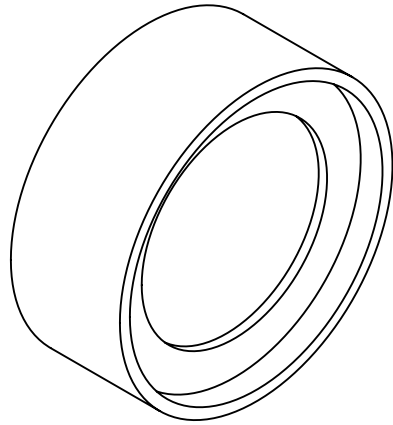


| SPECIFICATION | VALUE |
|----------------------------|---|
| CENTER WAVELENGTH (CWL) | 1200nm \pm 5nm |
| FULL WIDTH HALF MAX (FWHM) | 50nm \pm 5nm |
| MINIMUM TRANSMISSION | >90% |
| BLOCKING | OD > 4.0 FROM 200 TO 1500nm |
| SURFACE QUALITY | 80 - 50 |
| CONSTRUCTION | MOUNTED IN BLACK ANODIZED ALUMINUM RING |
| COATING TYPE | HARD COATED |
| DURABILITY | MIL-C-48497A, SECT. 3.4.1 |
| ENVIRONMENTAL | MIL-STD-810F, SECT. 507.4 |

SPECIFICATIONS SUBJECT TO CHANGE WITHOUT NOTICE
DIMENSIONS ARE FOR REFERENCE ONLY


| | | | | |
|---------------------|----|---|--|-----------------|
| EFL (AT 587.6nm) | NA |  Edmund Optics® | | |
| BFL (AT 587.6nm) | NA | TITLE | 1200nm CWL, 12.5mm Dia. Hard Coated OD4 50nm Bandpass Filter | |
| ALL DIMS IN | mm | DWG NO | 85884 | SHEET 1 OF 1 |

***FOR INFORMATION ONLY:
DO NOT MANUFACTURE
PARTS TO THIS DRAWING***

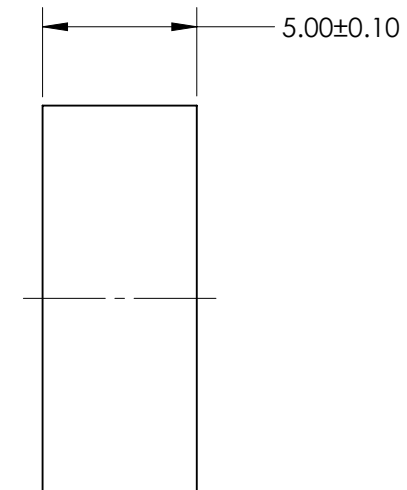
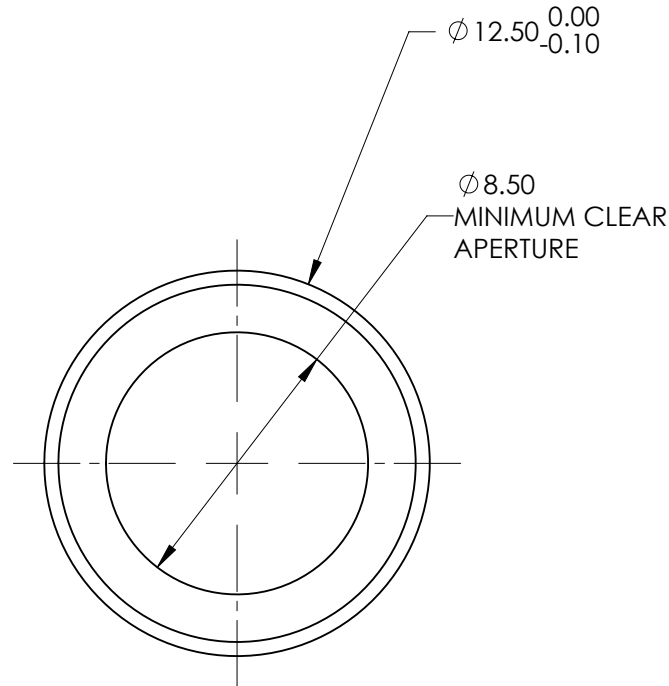
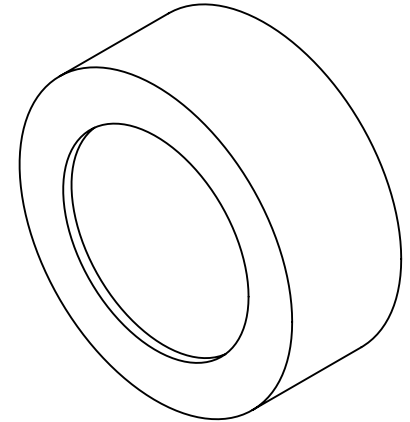
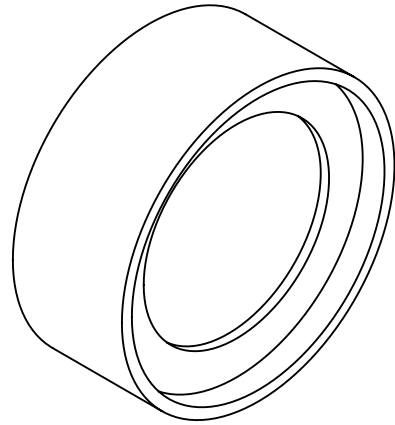


| SPECIFICATION | VALUE |
|----------------------------|---|
| CENTER WAVELENGTH (CWL) | 1250nm \pm 5nm |
| FULL WIDTH HALF MAX (FWHM) | 50nm \pm 5nm |
| MINIMUM TRANSMISSION | >90% |
| BLOCKING | OD > 4.0 FROM 200 TO 1800nm |
| SURFACE QUALITY | 80 - 50 |
| CONSTRUCTION | MOUNTED IN BLACK ANODIZED ALUMINUM RING |
| COATING TYPE | HARD COATED |
| DURABILITY | MIL-C-48497A, SECT. 3.4.1 |
| ENVIRONMENTAL | MIL-STD-810F, SECT. 507.4 |

SPECIFICATIONS SUBJECT TO CHANGE WITHOUT NOTICE
DIMENSIONS ARE FOR REFERENCE ONLY


| | | | | |
|---------------------|----|---|--|-----------------|
| EFL (AT 587.6nm) | NA |  Edmund Optics® | | |
| BFL (AT 587.6nm) | NA | TITLE | 1250nm CWL, 12.5mm Dia. Hard Coated OD4 50nm Bandpass Filter | |
| ALL DIMS IN | mm | DWG NO | 85885 | SHEET 1 OF 1 |

***FOR INFORMATION ONLY:
DO NOT MANUFACTURE
PARTS TO THIS DRAWING***

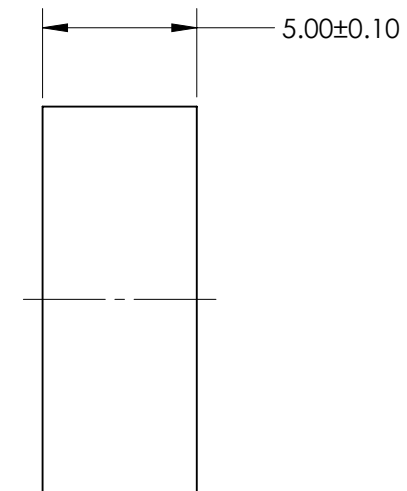
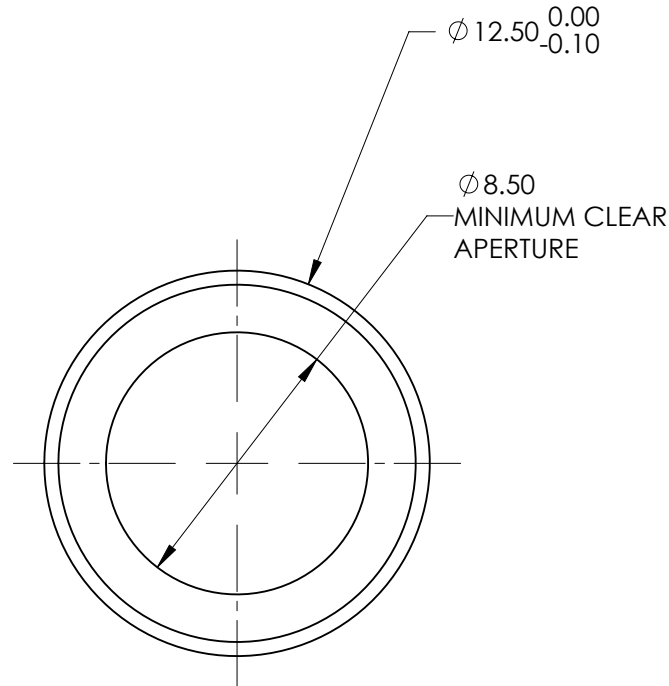
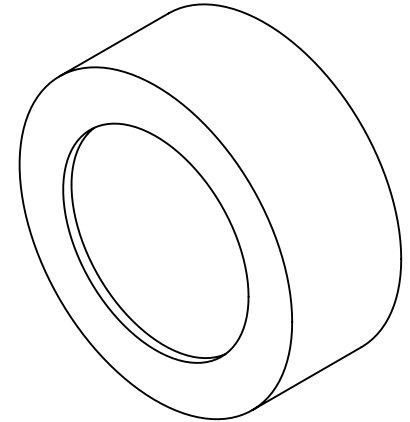
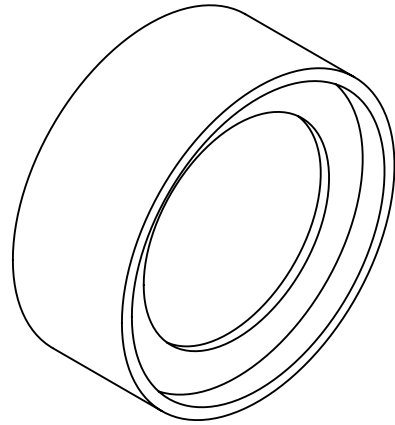


| SPECIFICATION | VALUE |
|----------------------------|---|
| CENTER WAVELENGTH (CWL) | 1300nm \pm 5nm |
| FULL WIDTH HALF MAX (FWHM) | 50nm \pm 5nm |
| MINIMUM TRANSMISSION | >90% |
| BLOCKING | OD > 4.0 FROM 200 TO 1800nm |
| SURFACE QUALITY | 80 - 50 |
| CONSTRUCTION | MOUNTED IN BLACK ANODIZED ALUMINUM RING |
| COATING TYPE | HARD COATED |
| DURABILITY | MIL-C-48497A, SECT. 3.4.1 |
| ENVIRONMENTAL | MIL-STD-810F, SECT. 507.4 |

SPECIFICATIONS SUBJECT TO CHANGE WITHOUT NOTICE
DIMENSIONS ARE FOR REFERENCE ONLY


| | | | | |
|---------------------|----|---|--|-----------------|
| EFL (AT 587.6nm) | NA |  Edmund Optics® | | |
| BFL (AT 587.6nm) | NA | TITLE | 1300nm CWL, 12.5mm Dia. Hard Coated OD4 50nm Bandpass Filter | |
| ALL DIMS IN | mm | DWG NO | 85886 | SHEET 1 OF 1 |

***FOR INFORMATION ONLY:
DO NOT MANUFACTURE
PARTS TO THIS DRAWING***

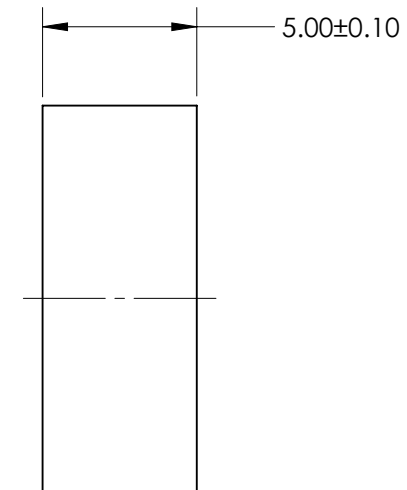
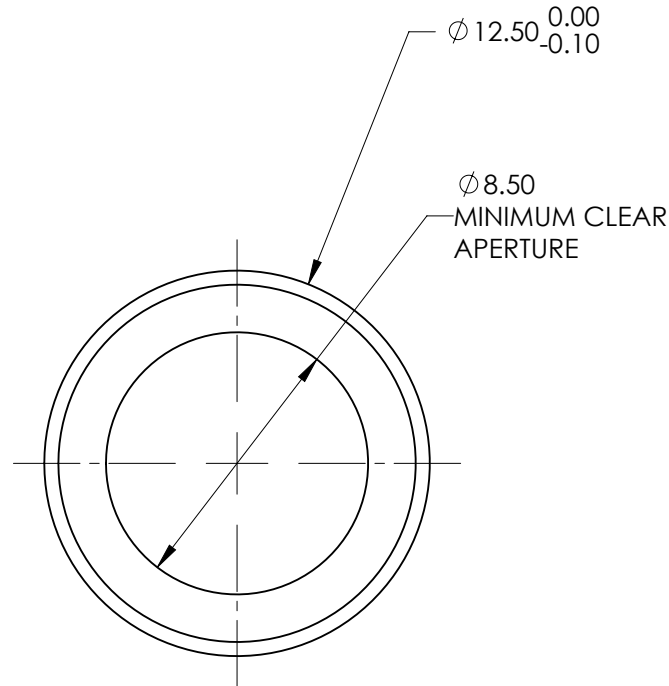
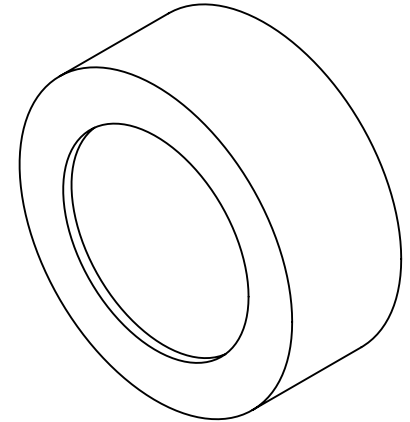
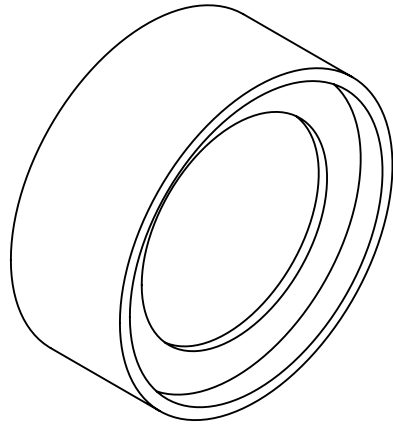


| SPECIFICATION | VALUE |
|----------------------------|---|
| CENTER WAVELENGTH (CWL) | 1350nm \pm 5nm |
| FULL WIDTH HALF MAX (FWHM) | 50nm \pm 5nm |
| MINIMUM TRANSMISSION | >90% |
| BLOCKING | OD > 4.0 FROM 200 TO 1800nm |
| SURFACE QUALITY | 80 - 50 |
| CONSTRUCTION | MOUNTED IN BLACK ANODIZED ALUMINUM RING |
| COATING TYPE | HARD COATED |
| DURABILITY | MIL-C-48497A, SECT. 3.4.1 |
| ENVIRONMENTAL | MIL-STD-810F, SECT. 507.4 |

SPECIFICATIONS SUBJECT TO CHANGE WITHOUT NOTICE
DIMENSIONS ARE FOR REFERENCE ONLY


| | | | | |
|---------------------|----|---|--|-----------------|
| EFL (AT 587.6nm) | NA |  Edmund Optics® | | |
| BFL (AT 587.6nm) | NA | TITLE | 1350nm CWL, 12.5mm Dia. Hard Coated OD4 50nm Bandpass Filter | |
| ALL DIMS IN | mm | DWG NO | 85887 | SHEET 1 OF 1 |

***FOR INFORMATION ONLY:
DO NOT MANUFACTURE
PARTS TO THIS DRAWING***

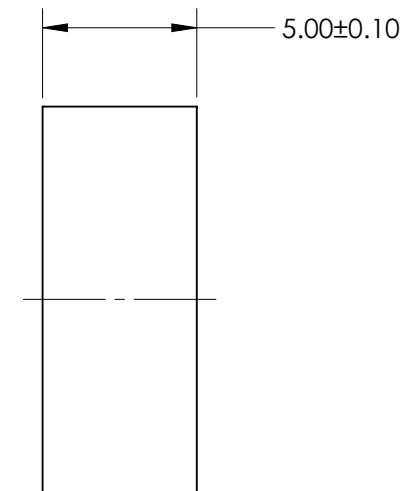
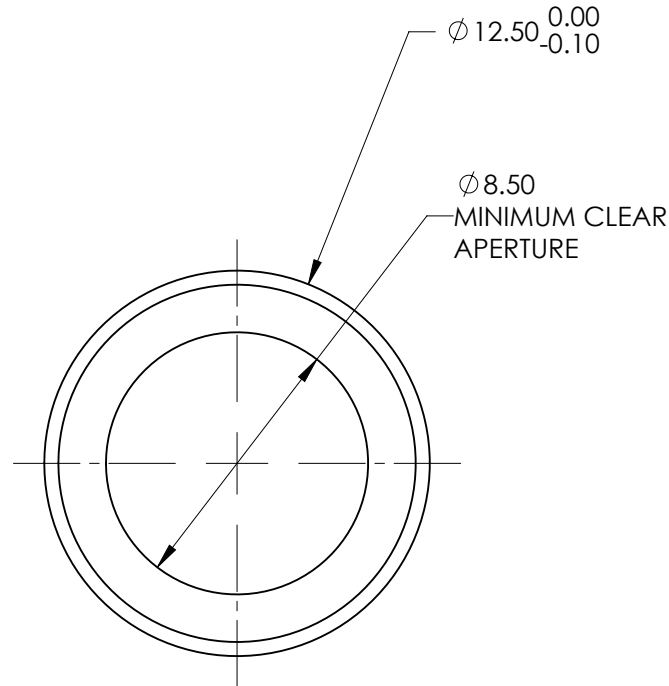
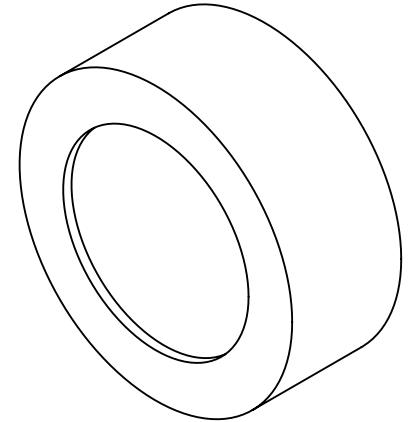
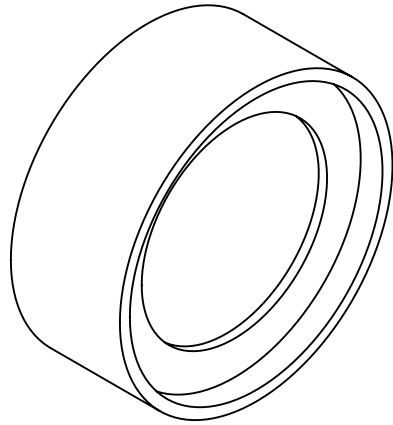


| SPECIFICATION | VALUE |
|----------------------------|---|
| CENTER WAVELENGTH (CWL) | 1400nm \pm 5nm |
| FULL WIDTH HALF MAX (FWHM) | 50nm \pm 5nm |
| MINIMUM TRANSMISSION | >90% |
| BLOCKING | OD > 4.0 FROM 200 TO 1800nm |
| SURFACE QUALITY | 80 - 50 |
| CONSTRUCTION | MOUNTED IN BLACK ANODIZED ALUMINUM RING |
| COATING TYPE | HARD COATED |
| DURABILITY | MIL-C-48497A, SECT. 3.4.1 |
| ENVIRONMENTAL | MIL-STD-810F, SECT. 507.4 |

SPECIFICATIONS SUBJECT TO CHANGE WITHOUT NOTICE
DIMENSIONS ARE FOR REFERENCE ONLY


| | | | | |
|---------------------|----|---|--|-----------------|
| EFL (AT 587.6nm) | NA |  Edmund Optics® | | |
| BFL (AT 587.6nm) | NA | TITLE | 1400nm CWL, 12.5mm Dia. Hard Coated OD4 50nm Bandpass Filter | |
| ALL DIMS IN | mm | DWG NO | 85888 | SHEET 1 OF 1 |

***FOR INFORMATION ONLY:
DO NOT MANUFACTURE
PARTS TO THIS DRAWING***

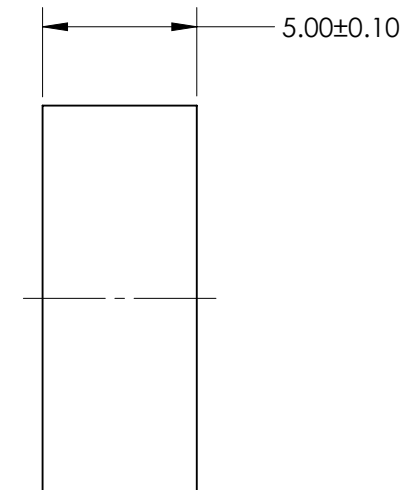
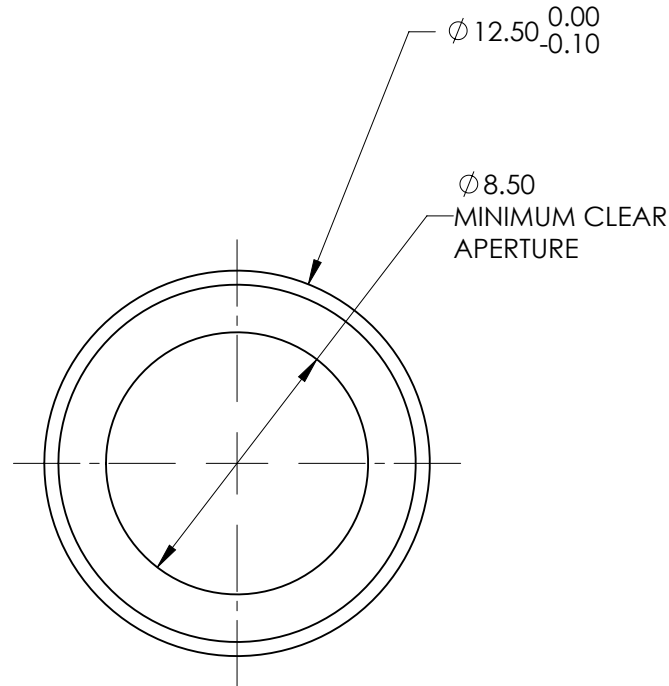
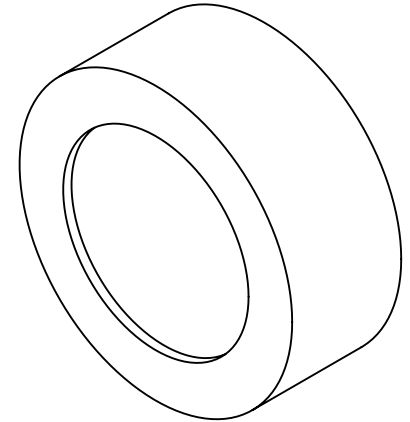
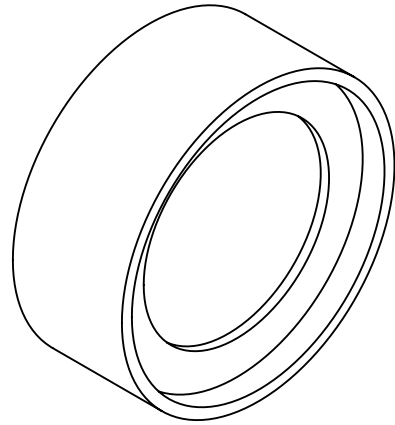


| SPECIFICATION | VALUE |
|----------------------------|---|
| CENTER WAVELENGTH (CWL) | 1450nm \pm 5nm |
| FULL WIDTH HALF MAX (FWHM) | 50nm \pm 5nm |
| MINIMUM TRANSMISSION | >90% |
| BLOCKING | OD > 4.0 FROM 200 TO 1800nm |
| SURFACE QUALITY | 80 - 50 |
| CONSTRUCTION | MOUNTED IN BLACK ANODIZED ALUMINUM RING |
| COATING TYPE | HARD COATED |
| DURABILITY | MIL-C-48497A, SECT. 3.4.1 |
| ENVIRONMENTAL | MIL-STD-810F, SECT. 507.4 |

SPECIFICATIONS SUBJECT TO CHANGE WITHOUT NOTICE
DIMENSIONS ARE FOR REFERENCE ONLY


| | | | | |
|---------------------|----|---|--|-----------------|
| EFL (AT 587.6nm) | NA |  Edmund Optics® | | |
| BFL (AT 587.6nm) | NA | TITLE | 1450nm CWL, 12.5mm Dia. Hard Coated OD4 50nm Bandpass Filter | |
| ALL DIMS IN | mm | DWG NO | 85889 | SHEET 1 OF 1 |

***FOR INFORMATION ONLY:
DO NOT MANUFACTURE
PARTS TO THIS DRAWING***

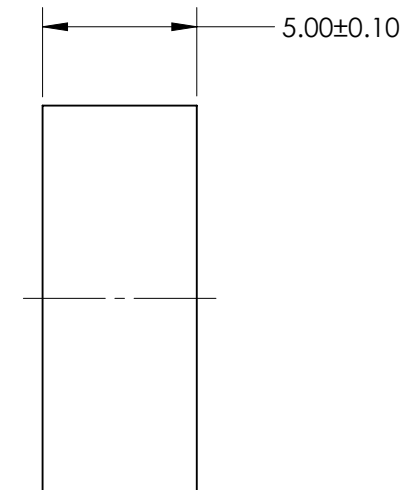
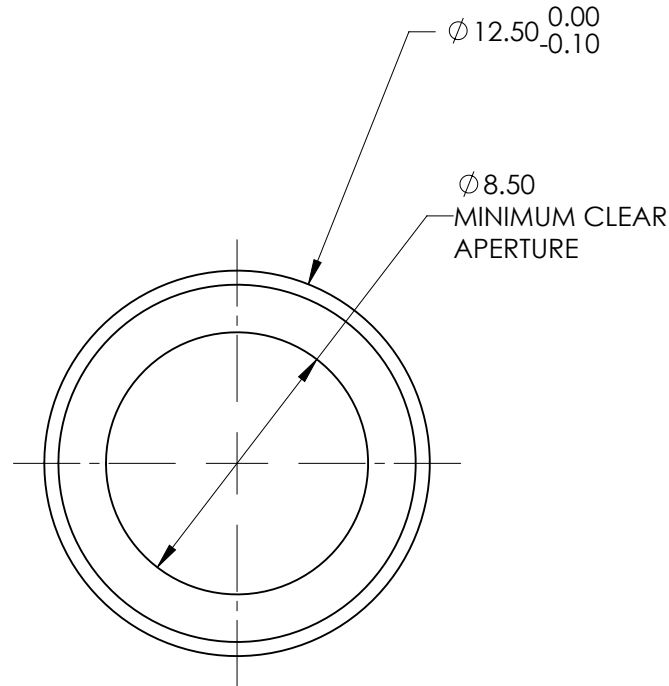
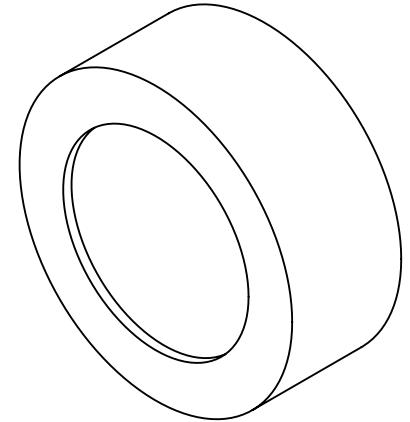
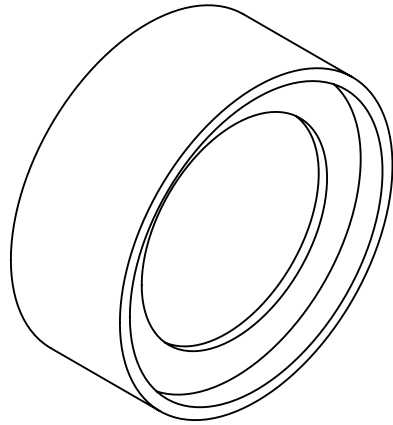


| SPECIFICATION | VALUE |
|----------------------------|---|
| CENTER WAVELENGTH (CWL) | 1500nm \pm 5nm |
| FULL WIDTH HALF MAX (FWHM) | 50nm \pm 5nm |
| MINIMUM TRANSMISSION | >90% |
| BLOCKING | OD > 4.0 FROM 200 TO 1800nm |
| SURFACE QUALITY | 80 - 50 |
| CONSTRUCTION | MOUNTED IN BLACK ANODIZED ALUMINUM RING |
| COATING TYPE | HARD COATED |
| DURABILITY | MIL-C-48497A, SECT. 3.4.1 |
| ENVIRONMENTAL | MIL-STD-810F, SECT. 507.4 |

SPECIFICATIONS SUBJECT TO CHANGE WITHOUT NOTICE
DIMENSIONS ARE FOR REFERENCE ONLY


| | | | | |
|---------------------|----|---|--|-----------------|
| EFL (AT 587.6nm) | NA |  Edmund Optics® | | |
| BFL (AT 587.6nm) | NA | TITLE | 1500nm CWL, 12.5mm Dia. Hard Coated OD4 50nm Bandpass Filter | |
| ALL DIMS IN | mm | DWG NO | 85890 | SHEET 1 OF 1 |

***FOR INFORMATION ONLY:
DO NOT MANUFACTURE
PARTS TO THIS DRAWING***



| SPECIFICATION | VALUE |
|----------------------------|---|
| CENTER WAVELENGTH (CWL) | 1550nm \pm 5nm |
| FULL WIDTH HALF MAX (FWHM) | 50nm \pm 5nm |
| MINIMUM TRANSMISSION | >90% |
| BLOCKING | OD > 4.0 FROM 200 TO 1800nm |
| SURFACE QUALITY | 80 - 50 |
| CONSTRUCTION | MOUNTED IN BLACK ANODIZED ALUMINUM RING |
| COATING TYPE | HARD COATED |
| DURABILITY | MIL-C-48497A, SECT. 3.4.1 |
| ENVIRONMENTAL | MIL-STD-810F, SECT. 507.4 |

SPECIFICATIONS SUBJECT TO CHANGE WITHOUT NOTICE
DIMENSIONS ARE FOR REFERENCE ONLY

| | | | | |
|---------------------|----|---|--|-----------------|
| EFL (AT 587.6nm) | NA |  Edmund Optics® | | |
| BFL (AT 587.6nm) | NA | TITLE | 1550nm CWL, 12.5mm Dia. Hard Coated OD4 50nm Bandpass Filter | |
| ALL DIMS IN | mm | DWG NO | 85891 | SHEET 1 OF 1 |