

**FOR INFORMATION ONLY:
DO NOT MANUFACTURE
PARTS TO THIS DRAWING**

NOTES:

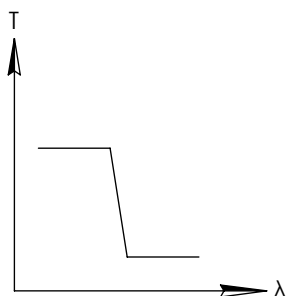
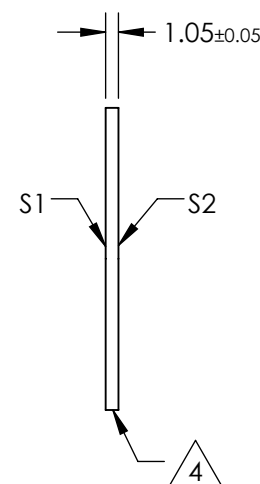
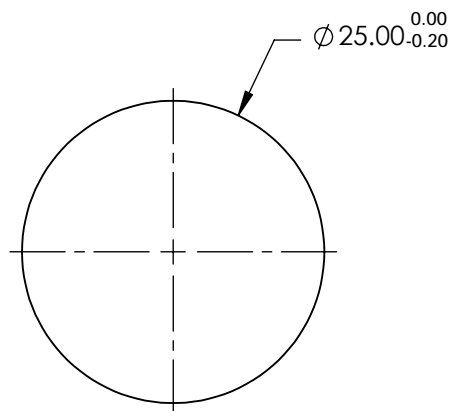
1. SUBSTRATE
2. SURFACE S2 TO BE PARALLEL WITH SURFACE S1 TO WITHIN 5 arcsec
3. COATING (APPLY ACROSS COATING APERTURE)
PERFORMANCE SPECIFICATIONS:
T(avg): >85% FROM 572 - 1056nm FOR RANDOM POLARIZATION @ 45° AOI
T(abs): >80% FROM 572 - 1056nm FOR ALL POLARIZATIONS @ 45° AOI
R(avg): >97% FROM 1155 - 1430nm FOR RANDOM POLARIZATION @ 45° AOI
R(abs): >95% FROM 1155 - 1430nm FOR ALL POLARIZATIONS @ 45° AOI
T(abs): = 50% 1100nm @ 45° AOI

GDD: $80 \pm 30\text{fs}^2$ @ 750 - 1056nm
 $0 \pm 80\text{fs}^2$ @ 600 - 1056nm

S1: HARD COATED
S2: SINGLE LAYER MgF2

 FINE GRIND SURFACE

5. POWER, IRREGULARITY, AND SURFACE QUALITY SPECIFICATIONS
APPLY ACROSS CLEAR APERTURE
6. TRANSMITTED WAVEFRONT DISTORTION RMS@ 632.8nm $\leq \frac{1}{4} \lambda$
7. ROHS COMPLIANT



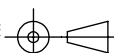
SHORTPASS FILTER

SPECIFICATIONS SUBJECT TO CHANGE WITHOUT NOTICE
DIMENSIONS ARE FOR REFERENCE ONLY

	S1	S2
SHAPE	PLANO	PLANO
SURFACE QUALITY	40-20	40-20
CLEAR APERTURE	Ø22.00	Ø22.00
COATING APERTURE	Ø24.00	Ø24.00
BEVEL	PROTECTIVE AS NEEDED	PROTECTIVE AS NEEDED

 **Edmund Optics®**

THIRD ANGLE
PROJECTION



ALL DIMS IN

mm

TITLE

1100nm, 25mm Diameter, Low GDD Dichroic
Shortpass Ultrafast Filter

DWG NO

14033

SHEET
1 OF 1